

NetVault 6.5 Backup and Recovery Software

A NEW STANDARD IN MODULAR ARCHITECTURE

Fast Facts About NetVault v6.5

Bare Metal Restore	LAN Free Backup
Bulk Media Handling	Logging and Job Tracking
Command Line Interface (CLI)	Media Data Copy
Comprehensive Media Management	Network Compression
Direct Access Restore	Network Load Balancing
DVD RAM Support	Comprehensive NDMP Support
Enhanced Firewall Support	Non-Proprietary Tape Formats
Event Notification	Open File Protection
GbE Device Support	SoIP Fabric Support

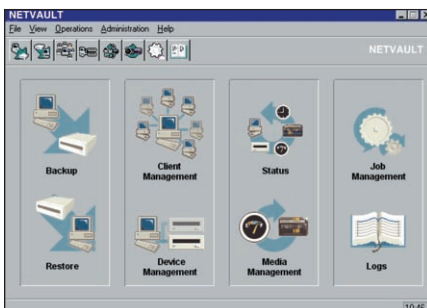
NetVault's innovative storage management architecture utilizes a modular design to deliver maximum performance while supporting flexible implementation strategies. A modular architecture allows you to efficiently utilize network resources by allowing you to distribute functionality where it is needed to be most effective.

Empowering Your Enterprise

Whether you're managing a single server, a departmental workgroup or a corporate network's multi-site storage resources, NetVault has a scalable solution to meet your ever growing needs. NetVault's modular architecture leverages today's high-speed network and device technologies to provide the following benefits:

- Flexible implementation, install only the components needed on each node
- Manageability, servers and clients are controlled from a central location
- Scalability, rapidly add and configure new servers, devices and clients
- Rapidly evolving, comprehensive business application support
- Early adoption of new technology using plug compatible modules

Protecting information assets is vital to the success of any organization. To be truly effective, a storage management product must be fast and reliable while lowering your total cost of ownership. NetVault delivers on that promise by providing a comprehensive solution that is simple to install and manage while providing high performance and state of art functionality in a cost effective suite of product offerings.



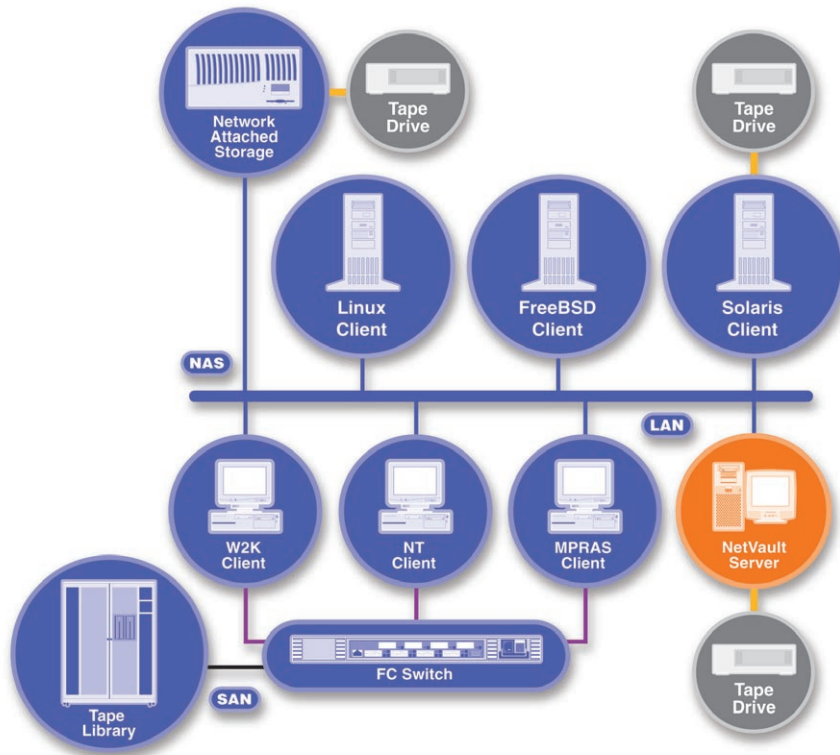
Platform Independent GUI

Powerful Features

Common User Interface: To ease administration and reduce training requirements, NetVault's graphic user interface presents the same look and feel on all supported Windows and UNIX operating platforms. The GUI facilitates Domain Management by extending control and configuration of multiple NetVault Servers from any user interface in the domain.

SAN / NAS Support: NetVault helps you leverage your investment in today's advanced storage networking technology. Large capacity libraries and high speed tape devices are easily shared within a domain. With DirecSAN™ support you can share media and libraries between multiple nodes to distribute backup operations while increasing data throughput and reducing network load. NetVault automatically determines the best data path and handles shared device arbitration.

NDMP Support for Networked Attached Storage (NAS): NetVault delivers the most feature rich NDMP solution on the market today. NetVault's NDMP APM is the only product to support all four NDMP backup configurations on Network Appliance filers. Using SmartClient™ and Dynamically Shared Device™ (DSD™) technology you can easily share library resources to protect information on popular filers from vendors like EMC, and Network Appliance.



Supported Devices & Libraries

Most existing tape libraries and tape formats (DLT, 8mm, 4mm DAT, DTF and others), including the latest high speed technologies (LTO, AIT-3, SuperDLT, DTF2, M2) from: ADIC, ATL, Breese Hill, Exabyte, HP, Maxoptix, Overland Data, Plasmon, Qualstar, Quantum, Seagate, SONY, Spectralogic, StorageTek plus ACSLS, Tandberg

DVD-RAM drives and libraries from: Asaca, DISC, Hitachi, JVC, Panasonic, Plasmon, NSM

Supported SAN/NAS Devices

Ancor, Brocade, Chaparral, Crossroads, EMC, FalconStor, Gadzoox, Network Appliance, Vixel

Server and Client Platforms

Compaq Alpha Tru64, FreeBSD, HP-UX, IBM AIX, Linux, NCR MP-RAS, SCO OpenServer, SCO Unixware, SGI Irix, Solaris (Sparc), Solaris (Intel), Windows 2000, Windows NT

Client Only Platforms

Novell Netware, Windows 95/98

See the complete updated list at:
www.bakbone.com/products/netvault/netvault.asp

Comprehensive Application Support: NetVault provides a full suite of Application Plug-in Modules (APMs) to provide online support for your critical business database and messaging applications. Installed on the client, the APM communicates with these applications using a backup interface that is consistent with each application. Each APM's interface automatically adds application specific components to your backup and restore selection criteria.

Virtual Disk Libraries (VDL): Backups can easily be sent directly to a local hard drive or SAN attached disk subsystem for improved performance during backup and recovery. VDL staging can minimize the impact on your network and act as a buffer, to ensure device streaming, when it's time to copy staged data to tape.

SmartClient™ Technology: You can add intelligence and boost performance in any network configuration with NetVault SmartClient's. SmartClient's add the ability to share control of a locally attached media device with other NetVault Client nodes. Device sharing provides alternative data paths for backup and recovery, reducing network loads and I/O contention on a NetVault Server.

Auto Device Configuration: To reduce implementation complexity and setup errors for a wide range of devices, NetVault's Plug'n'Play style of device configuration automatically detects devices connected to a NetVault node and selects the most appropriate driver templates.

About BakBone

BakBone Software is an international storage management software company that develops and globally distributes high-performance storage management solutions to the open systems markets. BakBone's near-line archive and backup/restore software suites provide scalable data protection from the workgroup to the enterprise. Founded in 2000, BakBone Software's products are used by companies worldwide, and are distributed through a network of OEMs, and solution providers.

Corporate Headquarters

BakBone Software
 10145 Pacific Heights Boulevard
 Suite 900
 San Diego, CA 92121
 P: 1-858-450-9009
 P: 1-866-484-2663
 F: 1-858-450-9929
 info@bakbone.com
 www.bakbone.com

Pacific Rim Headquarters

BakBone Software K.K.
 Shinjuku Dai-ichi Seimei Bldg. 11F
 2-7-1 Nishi Shinjuku Shinjuku-ku
 Tokyo 163-0711 Japan
 P: +81-3-5908-3511
 F: +81-3-5908-3512
 info@bakbone.co.jp

European Headquarters

BakBone Software Ltd.
 Merck House
 Seldown Lane
 Poole, Dorset BH15 1TW
 England
 P: +44-1202-241000
 F: +44-1202-249000
 info@bakbone.co.uk



©2002 BakBone Software, Inc. BakBone Software, the BakBone logo and NetVault are the trademarks or registered trademarks of BakBone Software, Inc., in the United States and/or in other countries. All other names and trademarks are the property of their respective owners.