

Replacing a Sun Fire V20z or Sun Fire V40z SCSI Backplane

This document contains:

- “To Replace a SCSI Backplane in a Sun Fire V20z Server” on page 1
- “To Replace a SCSI Backplane Assembly in a Sun Fire V40z Server” on page 5

Refer to the Service Label, on the inside of the chassis cover, for the location of the component.

To Replace a SCSI Backplane in a Sun Fire V20z Server

1. Turn off the system, including any attached peripherals.
2. While pressing the cover latch release button with your right thumb (A), slide the cover towards the rear of the chassis until it contacts the stop (B). (See [FIGURE 1](#).)
3. Lift the cover up and remove it.

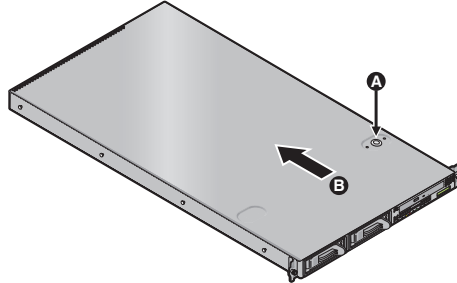


FIGURE 1 Removing the Cover

4. Remove all hard disk drive carriers. See [FIGURE 2](#).
 - a. Squeeze the release latch and swing the arm to the left as far as it will go.
 - b. Grasp the carrier bezel with both hands and carefully pull the carrier out of the drive bay. Avoid using the arm to remove the carrier.

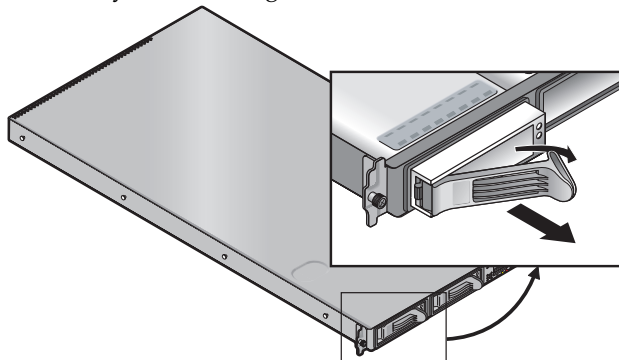


FIGURE 2 SCSI Hard Disk Drive Carrier and Release Latch

5. Remove the center air baffle. See [FIGURE 3](#).



FIGURE 3 Removing the Center Air Baffle

6. Remove the second processor fan from the right. See [FIGURE 4](#).
- Unplug the fan's power connector from the motherboard.
 - Pull the fan straight up to remove it from the fan tray.

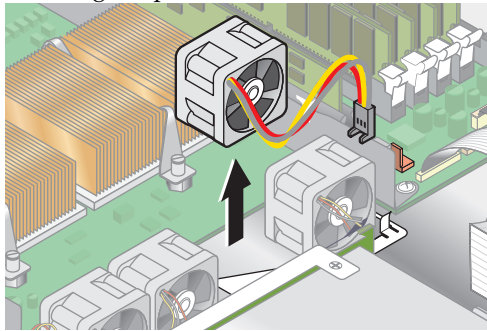


FIGURE 4 Removing a Cooling Fan

7. Remove the CPU VRM for CPU 1 (left-hand CPU) by pulling it straight up, out of its sockets. See [FIGURE 5](#).

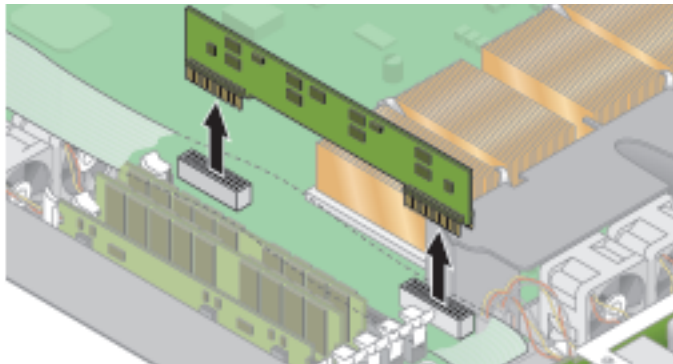


FIGURE 5 Removing the CPU 1 VRM

8. Disconnect the 5-pin power cable, the small flat cable, and the 68-pin ribbon signal cable from the SCSI backplane. See [FIGURE 6](#).

Caution – Use care when handling the small flat cables. They are extremely fragile.

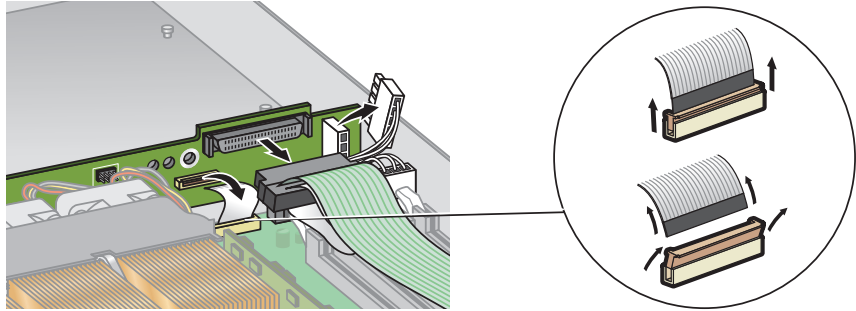


FIGURE 6 Uncabling the SCSI Backplane

9. Unfasten the two screws securing the backplane to the chassis.
10. Lift the SCSI backplane up and out of the chassis. See [FIGURE 7](#).

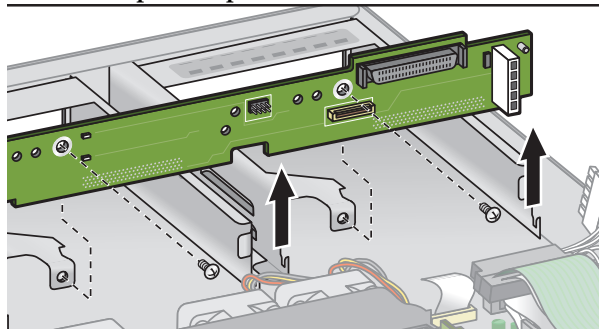


FIGURE 7 Removing the SCSI Backplane

Note – When reinstalling the SCSI backplane, ensure that the jumper is installed as shown in [Figure 8](#).

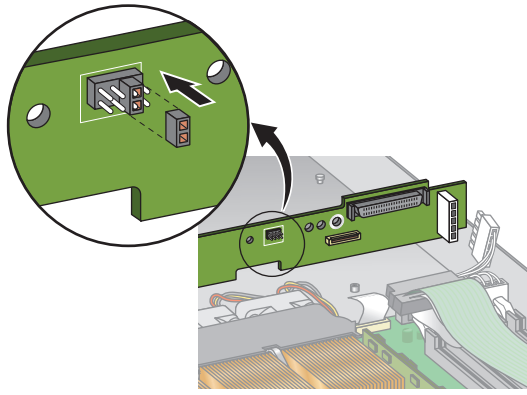


FIGURE 8 SCSI Backplane Jumper

Caution – Ensure that the fan wires are not pinched when reinstalling the backplane.

Note – Check the routing of all cables for obstructions before reinstalling the cover.

To Replace a SCSI Backplane Assembly in a Sun Fire V40z Server

1. Turn off the system, including any attached peripherals.

Refer to the *Sun Fire V20z and Sun Fire V40z Servers User Guide* for full instructions on powering off the server.

2. Loosen the captive screw on the cover latch, then rotate the latch toward the system rear to push back the cover. See [FIGURE 9](#).
3. Lift the cover up and remove it.

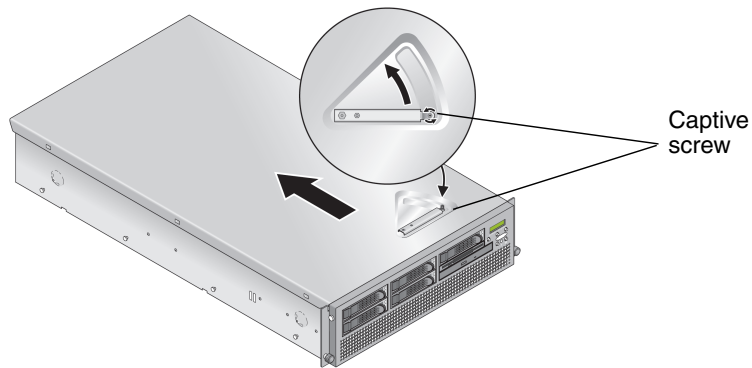


FIGURE 9 Removing the Sun Fire V40z Cover

4. Remove all HDD carriers and the CD-ROM/DVD/Diskette drive assembly from the bays on the server front.

All drives and carriers must be disconnected from the SCSI backplane before you can remove it.

5. Remove the main air baffle (see [FIGURE 10](#)).

Lift the rear edge of the baffle, then move it toward the server rear to disengage the hooks on the front edge of the baffle.

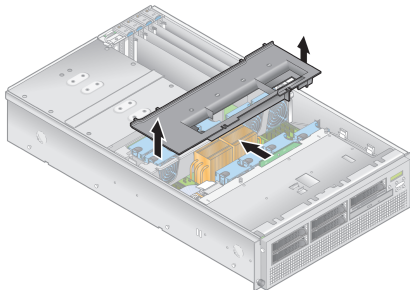


FIGURE 10 Removing the Main Air Baffle

6. Disconnect the two cables that connect to the rear side of the SCSI backplane circuit board (see [FIGURE 11](#)):
7. Loosen the two captive screws that secure the SCSI backplane assembly to the chassis (see [FIGURE 11](#)).
8. Lift the SCSI backplane assembly up and out of the chassis.

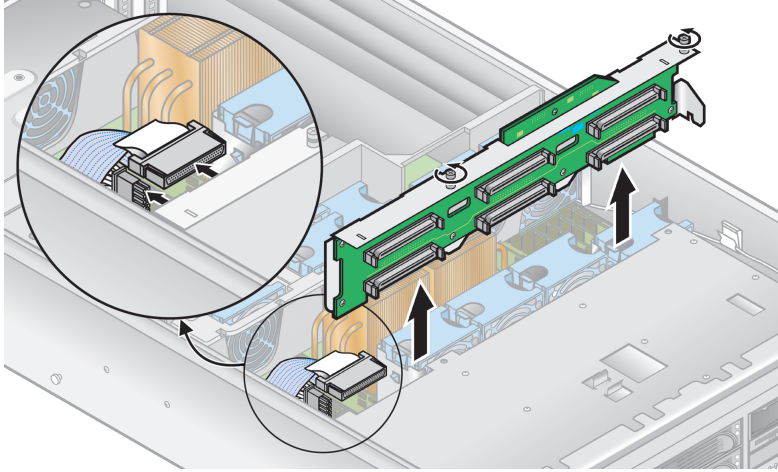


FIGURE 11 Removing the SCSI Backplane Assembly

9. Install the new SCSI backplane assembly by reversing [Step 4](#) through [Step 8](#).
10. Check the routing of all cables for obstructions and then reinstall the cover.

Part Number: 817-5276-11
May, 2004, Revision A

Copyright 2004 Sun Microsystems, Inc. All rights reserved. Use is subject to license terms. Third-party software, including font technology, is copyrighted and licensed from Sun suppliers. Portions may be derived from Berkeley BSD systems, licensed from U. of CA. Sun, Sun Microsystems, the Sun logo, and Solaris are trademarks or registered trademarks of Sun Microsystems, Inc. in the U.S. and in other countries. All SPARC trademarks are used under license and are trademarks or registered trademarks of SPARC International, Inc. in the U.S. and in other countries. U.S. Government Rights—Commercial use. Government users are subject to the Sun Microsystems, Inc. standard license agreement and applicable provisions of the FAR and its supplements.

Copyright 2004 Sun Microsystems, Inc. Tous droits réservés. Distribué par des licences qui en restreignent l'utilisation. Le logiciel détenu par des tiers, et qui comprend la technologie relative aux polices de caractères, est protégé par un copyright et licencié par des fournisseurs de Sun. Des parties de ce produit pourront être dérivées des systèmes Berkeley BSD licenciés par l'Université de Californie. Sun, Sun Microsystems, le logo Sun, et Solaris sont des marques de fabrique ou des marques déposées de Sun Microsystems, Inc. aux Etats-Unis et dans d'autres pays. Toutes les marques SPARC sont utilisées sous licence et sont des marques de fabrique ou des marques déposées de SPARC International, Inc. aux Etats-Unis et dans d'autres pays.