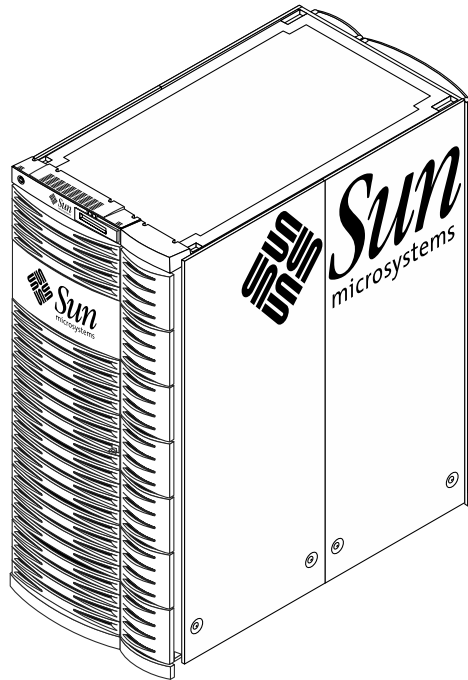
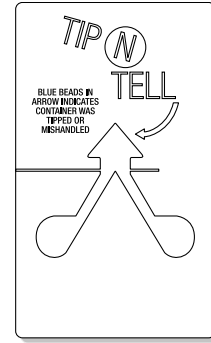


Sun Fire™ 15K/12K Systems Unpacking Guide



1. Verify the container was not damaged during shipment. Review the TIP N TELL device and all packaging components for indications of rough treatment. If damage is evident, note on airbill or bill of lading. Failure to note damage may invalidate future claims. Noting possible damage allows the claimant time to file a claim with the shipping carrier.



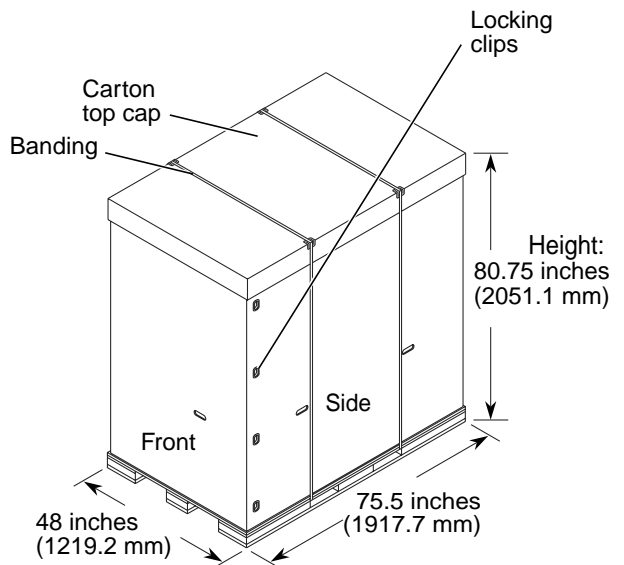
Caution – Use a 60-inch pallet jack (suggested) to transport the container.

2. Prepare cutting pliers, or equivalent, to remove plastic banding on outside of shipping container. A minimum of 18 ft [5.49 meters] of floor space is required to unload the cabinet. The cabinet may be unloaded from either end of the pallet. Ramps are attach to either end of the pallet. Note the “RAMPS ATTACH THIS END” markings and image on the outside of the shipping carton when considering its permanent location. The shipping label on the carton indicates the front of the unit.

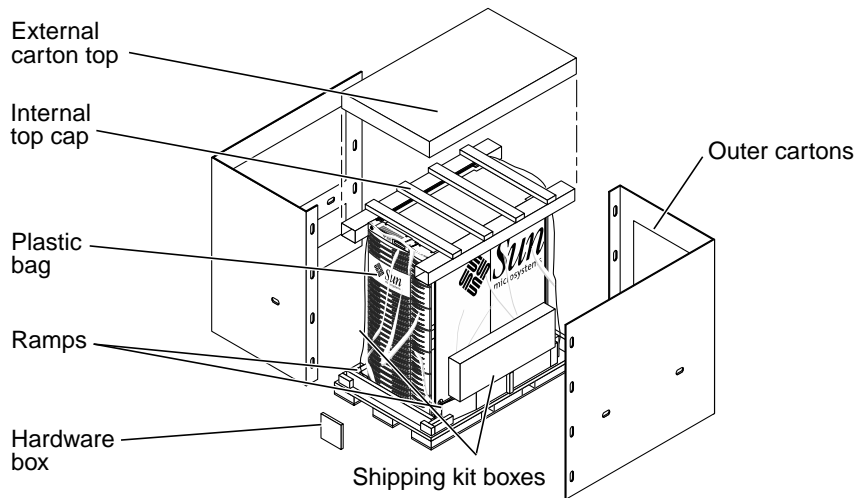
3. Position the shipping container as close as possible to the final installation site. Access to all sides of the cabinet is needed with a minimum of 18 ft (5.49 m) to move the cabinet from the pallet, down the ramp, and onto the floor.

4. Cut the outer banding and remove the carton top cap. Remove the eight plastic locking clips (four per side) by squeezing the center flanges together while pulling outward.

5. Remove outer cartons. Remove the hardware box located at the front or rear of the system and the two shipping kit boxes located on the sides of the pallet deck. Take out the 9/16-inch open-end wrench from the hardware box, and retain the remaining items for later use as needed.



6. Remove internal top cap. Remove the two ramps from each side of the pallet deck and set aside for later use.



7. Remove the customer service documentation from the shipping kit box. Customer service documentation consists of the system overview, site planning guide, hardware installation and de-installation guide, service manual, and additional configuration information.



Caution – To prevent damage during installation, remove the four doors from the cabinet before you remove the unit from the pallet. Use the edges of the cabinet frame to maneuver the cabinet. **Do not use the internal system board handles to move the cabinet.**

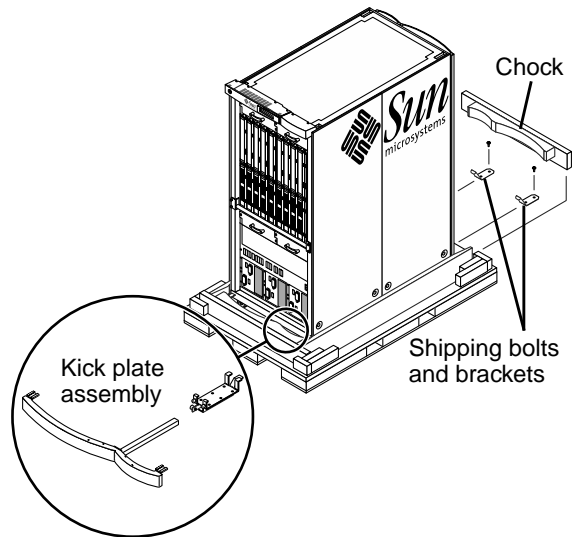
8. Remove the front and rear chocks. Remove the outer plastic bag. Remove the doors from the front and rear of the cabinet by pulling down on the top spring-loaded hinge pins, and then lift the doors upward to remove from the pins on the bottom hinge brackets of the cabinet. Set the four doors aside.



Caution – To prevent damage to the kick plate mounting bracket assembly, remove the kick plate from both ends of the cabinet prior to unloading. The cabinet cannot be moved at an angle of more than 10 degrees maximum.

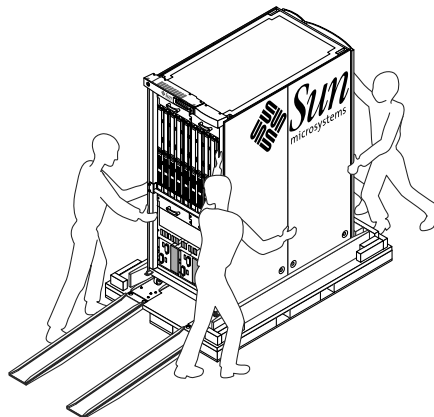
9. Remove the kick plate assemblies at the front and rear of the cabinet. Use a pull-turn motion to release the spring-loaded captive locking pin and pull the kick plate and mounting tube outward from the mounting bracket and set aside. Loosen the two captive panel fasteners of the kick plate mounting bracket assembly. Remove by pulling forward and tipping downward to release the support tabs from their mounting holes.

10. Return a chock to the pallet end used for unloading.
11. At the end of the pallet not used for unloading, use the 9/16-inch open-end wrench to remove the four bolts from the two zinc-plated shipping brackets. Retain the parts for later use.
12. Return the remaining chock to its original position on the pallet deck.



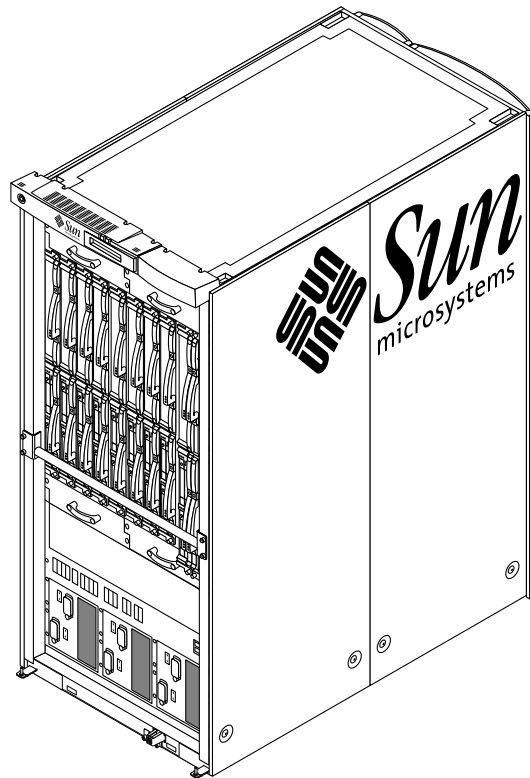
Caution – Ensure Step 12 is completed before proceeding. Both chocks should be installed at this time.

13. Align the tines of the ramps with corresponding holes at the unloading side of the pallet. Verify the ramps are firmly in position by pressing or standing on the back side of the tines.
14. At the unloading side of the pallet where the ramps are attached, remove the chock. Using the 9/16 inch open-end wrench, remove the four bolts from the two zinc-plated shipping brackets. Retain the parts for later use.
15. Move the cabinet off the pallet. One or two persons should push while two others slowly guide the cabinet down the ramps. Maneuver the cabinet using the edges of the cabinet frame. *Do not* use the internal handles to move the cabinet.



Caution – Refer to the *Sun Fire 15K/12K Systems Site Planning Guide* for air-cooling requirements for raised-floor computer room environments.

16. Move the cabinet to the position where it will be installed. Fully extend the four leveling feet at the base of each corner of the cabinet. Make an additional 1/4 turn of the leveling feet to ensure stability.
17. After the cabinet has been positioned in its permanent location, re-install the two kick plate assemblies. Insert the inner support tabs of the kick plate mounting bracket. Align the two outer tabs at the front mounting holes of the cabinet frame and slide the bracket inward to align the inner support tabs into the two mounting holes of the horizontal support structure under the cabinet. Secure with the two captive panel fasteners. Re-insert the square mounting tube of the kick plate mounting bracket assembly until it is flush with the cabinet. Secure with the spring-loaded captive-locking pin.
18. Use a Phillips No. 2 screwdriver to loosen the four captive screws on the front handle bar and the four captive screws on the rear handle bar. Remove and retain these parts for later use.
19. Reinstall the front and rear cabinet doors by inserting each door onto the bottom peg for each bottom-hinge bracket of the cabinet. At the top of each door, pull down the spring-loaded pin and insert the peg of the door into the top-hinge bracket of the cabinet.



Note – Shipping materials cannot be reused due to foam compression. These materials can be disposed of per the customer's instructions. Reduce and recycle whenever possible.

20. Refer to the *Sun Fire 15K/12K Systems Hardware Installation and De-Installation Guide* and the other customer service documentation that was removed in Step 7.

Accessing Sun Documentation

You can view, print, or purchase a broad selection of Sun documentation, including localized versions, at:

<http://www.sun.com/documentation>

Contacting Sun Technical Support

If you have technical questions about this product that are not answered in this document, go to:

<http://www.sun.com/service/contacting>

Sun Welcomes Your Comments

Sun is interested in improving its documentation and welcomes your comments and suggestions. You can submit your comments by going to:

<http://www.sun.com/hwdocs/feedback>

Please include the title and part number of your document with your feedback:

Sun Fire 15K/12K Systems Unpacking Guide, part number 806-3508-12

Copyright 2003 Sun Microsystems, Inc. All rights reserved. Use is subject to license terms. Third-party software, including font technology, is copyrighted and licensed from Sun suppliers. Portions may be derived from Berkeley BSD systems, licensed from U. of CA. Sun, Sun Microsystems, the Sun logo, Sun Fire, and Solaris are trademarks or registered trademarks of Sun Microsystems, Inc. in the U.S. and in other countries. All SPARC trademarks are used under license and are trademarks or registered trademarks of SPARC International, Inc. in the U.S. and in other countries. Government users are subject to the Sun Microsystems, Inc. standard license agreement and applicable provisions of the FAR and its supplements.

Copyright 2003 Sun Microsystems, Inc. Tous droits réservés. Distribué par des licences qui en restreignent l'utilisation. Le logiciel détenu par des tiers, et qui comprend la technologie relative aux polices de caractères, est protégé par un copyright et licencié par des fournisseurs de Sun. Des parties de ce produit pourront être dérivées des systèmes Berkeley BSD licenciés par l'Université de Californie. Sun, Sun Microsystems, le logo Sun, Sun Fire, et Solaris sont des marques de fabrique ou des marques déposées de Sun Microsystems, Inc. aux Etats-Unis et dans d'autres pays. Toutes les marques SPARC sont utilisées sous licence et sont des marques de fabrique ou des marques déposées de SPARC International, Inc. aux Etats-Unis et dans d'autres pays.



Sun Microsystems, Inc.
4150 Network Circle
Santa Clara, CA 95054 USA
www.sun.com

Part No. 806-3508-12, Rev.A
June 2003