



Common Desktop Environment: Application Builder User's Guide

Sun Microsystems, Inc.
901 San Antonio Road
Palo Alto, CA 94303-4900
U.S.A.

Part Number 806-2911-10
February 2000

Copyright 2000 Sun Microsystems, Inc. 901 San Antonio Road, Palo Alto, California 94303-4900 U.S.A. All rights reserved.

This product or document is protected by copyright and distributed under licenses restricting its use, copying, distribution, and decompilation. No part of this product or document may be reproduced in any form by any means without prior written authorization of Sun and its licensors, if any. Third-party software, including font technology, is copyrighted and licensed from Sun suppliers.

Parts of the product may be derived from Berkeley BSD systems, licensed from the University of California. UNIX is a registered trademark in the U.S. and other countries, exclusively licensed through X/Open Company, Ltd.

Sun, Sun Microsystems, the Sun logo, docs.sun.com, AnswerBook, AnswerBook2, and Solaris are trademarks, registered trademarks, or service marks of Sun Microsystems, Inc. in the U.S. and other countries. All SPARC trademarks are used under license and are trademarks or registered trademarks of SPARC International, Inc. in the U.S. and other countries. Products bearing SPARC trademarks are based upon an architecture developed by Sun Microsystems, Inc.

The OPEN LOOK and Sun™ Graphical User Interface was developed by Sun Microsystems, Inc. for its users and licensees. Sun acknowledges the pioneering efforts of Xerox in researching and developing the concept of visual or graphical user interfaces for the computer industry. Sun holds a non-exclusive license from Xerox to the Xerox Graphical User Interface, which license also covers Sun's licensees who implement OPEN LOOK GUIs and otherwise comply with Sun's written license agreements.

RESTRICTED RIGHTS: Use, duplication, or disclosure by the U.S. Government is subject to restrictions of FAR 52.227-14(g)(2)(6/87) and FAR 52.227-19(6/87), or DFAR 252.227-7015(b)(6/95) and DFAR 227.7202-3(a).

DOCUMENTATION IS PROVIDED "AS IS" AND ALL EXPRESS OR IMPLIED CONDITIONS, REPRESENTATIONS AND WARRANTIES, INCLUDING ANY IMPLIED WARRANTY OF MERCHANTABILITY, FITNESS FOR A PARTICULAR PURPOSE OR NON-INFRINGEMENT, ARE DISCLAIMED, EXCEPT TO THE EXTENT THAT SUCH DISCLAIMERS ARE HELD TO BE LEGALLY INVALID.

Copyright 2000 Sun Microsystems, Inc. 901 San Antonio Road, Palo Alto, California 94303-4900 Etats-Unis. Tous droits réservés.

Ce produit ou document est protégé par un copyright et distribué avec des licences qui en restreignent l'utilisation, la copie, la distribution, et la décompilation. Aucune partie de ce produit ou document ne peut être reproduite sous aucune forme, par quelque moyen que ce soit, sans l'autorisation préalable et écrite de Sun et de ses bailleurs de licence, s'il y en a. Le logiciel détenu par des tiers, et qui comprend la technologie relative aux polices de caractères, est protégé par un copyright et licencié par des fournisseurs de Sun.

Des parties de ce produit pourront être dérivées du système Berkeley BSD licenciés par l'Université de Californie. UNIX est une marque déposée aux Etats-Unis et dans d'autres pays et licenciée exclusivement par X/Open Company, Ltd.

Sun, Sun Microsystems, le logo Sun, docs.sun.com, AnswerBook, AnswerBook2, et Solaris sont des marques de fabrique ou des marques déposées, ou marques de service, de Sun Microsystems, Inc. aux Etats-Unis et dans d'autres pays. Toutes les marques SPARC sont utilisées sous licence et sont des marques de fabrique ou des marques déposées de SPARC International, Inc. aux Etats-Unis et dans d'autres pays. Les produits portant les marques SPARC sont basés sur une architecture développée par Sun Microsystems, Inc.

L'interface d'utilisation graphique OPEN LOOK et Sun™ a été développée par Sun Microsystems, Inc. pour ses utilisateurs et licenciés. Sun reconnaît les efforts de pionniers de Xerox pour la recherche et le développement du concept des interfaces d'utilisation visuelle ou graphique pour l'industrie de l'informatique. Sun détient une licence non exclusive de Xerox sur l'interface d'utilisation graphique Xerox, cette licence couvrant également les licenciés de Sun qui mettent en place l'interface d'utilisation graphique OPEN LOOK et qui en outre se conforment aux licences écrites de Sun.

CETTE PUBLICATION EST FOURNIE "EN L'ETAT" ET AUCUNE GARANTIE, EXPRESSE OU IMPLICITE, N'EST ACCORDEE, Y COMPRIS DES GARANTIES CONCERNANT LA VALEUR MARCHANDE, L'APTITUDE DE LA PUBLICATION A REpondre A UNE UTILISATION PARTICULIERE, OU LE FAIT QU'ELLE NE SOIT PAS CONTREFAISANTE DE PRODUIT DE TIERS. CE DENI DE GARANTIE NE S'APPLIQUERAIT PAS, DANS LA MESURE OU IL SERAIT TENU JURIDIQUEMENT NUL ET NON AVENU.



Contents

- Preface 11**
- 1. Getting Started 15**
 - Application Builder Primary Window 15
 - Starting and Exiting App Builder 16
 - ▼ To Open App Builder from an Icon 16
 - ▼ To Start App Builder from the Command Line 17
 - ▼ To Exit App Builder 17
 - Overview of the App Builder Process 17
 - Object Types 18
 - Rules for Dropping Objects 19
- 2. Managing Projects and Modules 21**
 - Creating, Opening, and Saving Projects 21
 - ▼ To Create a New Project 21
 - ▼ To Open an Existing Project 22
 - ▼ To Save a Project 23
 - ▼ To Save a Version of a Project 24
 - ▼ To Rename a Project 24
 - ▼ To Save a Project to a File (Encapsulate Project) 25
 - ▼ To Close a Project 26

Creating, Importing, Exporting, and Saving Modules	26
▼ To Create a New Module	26
▼ To Import a Module into a Project	27
▼ To Save a Module	28
▼ To Rename a Module	28
▼ To Export a Module	29
▼ To Save a Module in UIL Format	29
Showing, Hiding, and Removing Modules	30
▼ To Show a Hidden Module	31
▼ To Hide a Shown Module	31
▼ To Remove a Module from a Project	31
3. Laying Out a User Interface	33
Dragging and Dropping Palette Objects	33
▼ To Create a Main Window, Custom Dialog, or File Selection Dialog	34
▼ To Create a Window With a Spanning Control Pane	34
Selecting Interface Objects	35
▼ To Select Window or Pane Objects in the Interface or the Browser	35
▼ To Select Control Objects in the Interface or the Browser	36
Editing Objects in the Interface or in the Browser	37
▼ To Cut or Copy Objects	37
▼ To Paste Objects	37
▼ To Delete Objects	38
Aligning and Distributing Objects in an Interface	38
▼ To Align Control Objects in an Interface	39
▼ To Distribute Control Objects Evenly	39
4. Editing Properties of Interface Objects	41
Property Editor Procedures	41
▼ To Open a Property Editor	41

- ▼ To Edit Properties of an Object 42
- ▼ To Display a Fixed Property Editor 43
- ▼ To Select Colors From the Color Chooser 43
- Example: Editing Main Window Properties 44
- ▼ To Edit Properties of a Main Window 44
- 5. Creating and Editing Panes, Menus, and Messages 47**
 - Creating and Editing Pane Entities 47
 - Child Panes 48
 - ▼ To Create a Child Pane 48
 - Layered Panes 48
 - ▼ To Create a Layered Pane 48
 - ▼ To View Layered Panes 49
 - Paned Windows 49
 - ▼ To Create a Paned Window 50
 - ▼ To Add a Pane to a Paned Window 51
 - ▼ To Unmake a Paned Window 51
 - Creating and Editing Menus 52
 - Menu Property Editor 52
 - ▼ To Create a Menu 54
 - ▼ To Edit a Menu 55
 - ▼ To Attach an Existing Menu to an Object 56
 - ▼ To Create and Attach a Menu 57
 - ▼ To Attach an Existing Submenu to a Menu Item 58
 - ▼ To Create and Attach a Submenu 59
 - ▼ To Create and Attach a Help Menu 60
 - Creating and Editing Messages 61
 - Message Editor 61
 - ▼ To Create a Message Dialog Box 63

- ▼ To Edit a Message 65
- ▼ To Connect a Non-Modal Message to a Function 65
 - Example: Writing Code for Messages 66
- ▼ To Write Code for Modal Messages 67
- ▼ To Write Code for Non-Modal Messages 68
- 6. Adding Functionality to the Interface 71**
 - Creating Help and Help Connections 71
 - About App Builder Help 72
 - ▼ To Create Help 72
 - ▼ To Connect a Help Menu to On Item Help 73
 - ▼ To Connect a Help Menu to a Help Volume 74
 - Making Connections Between Objects 75
 - ▼ To Make a Connection between Two Objects 75
 - Connecting Menu Items to Actions 77
 - ▼ To Connect a Menu Item to a Predefined Action 77
 - ▼ To Connect a Menu Item to a Call Function 78
 - ▼ To Connect a Menu Item to an Execute Code Action 79
 - Editing Existing Connections 80
 - ▼ To Edit an Existing Connection 80
 - Establishing Drag and Drop Behavior 81
 - ▼ To Establish Drag and Drop Behavior 82
 - Establishing Application Framework Behavior 84
 - ▼ To Establish Application Framework Behavior 88
- 7. Grouping and Attaching Objects 91**
 - Grouping Objects 91
 - ▼ To Create a Group 92
 - ▼ To Edit Group Properties 92
 - ▼ To Ungroup Objects in an Interface 93

▼	To Create a Border Around an Object	94
	Attaching Objects	94
	Attachments Editor	95
▼	To Attach Objects in an Interface	100
	Attachment Example: Custom Dialog	101
8.	Testing Menus, Help, and Connections	103
	Test Procedures	103
▼	To Test a Project or Selected Modules	103
▼	To Test Help Volume Access	104
▼	To Test On Item Help	104
▼	To Test Menus in a Module	105
▼	To Test Connections in a Project	106
9.	Generating Code and Building an Application	109
	Making and Running an Application	109
▼	To Make and Run in One Step	110
▼	To Generate Code, Make, and Run Separately	110
▼	To Set Code Generator Options	111
▼	To Set Environment Options	112
▼	To Generate Code From the Command Line	112
	Adding User Code to Generated Code	113
A.	App Builder Windows and Dialog Boxes	115
	App Builder Primary Window	116
	Windows Palette	117
	Panels Palette	119
	Controls Palette	122
	Object Information Area	124
	Project Organizer	125
	Module Browser	126

Code Generator Window	128
Code Generator Options Dialog Box	129
Code Generator Environment Options Dialog Box	131
B. Revolving Property Editor	133
Property Editor: Universal Properties	134
Property Editor: Common Properties	135
Property Editor: Common Buttons	137
Individual Property Editors	139
Button Property Editor	139
Choice Property Editor	140
Combo Box Property Editor	140
Control Pane Property Editor	141
Custom Dialog Property Editor	141
Draw Area Pane Property Editor	142
File Selection Dialog Property Editor	142
Group Property Editor	143
Label Property Editor	144
List Property Editor	145
Main Window Property Editor	145
Menu Property Editor	146
Menubar Property Editor	148
Paned Window Property Editor	149
Scale Property Editor	149
Separator Property Editor	150
Spin Box Property Editor	151
Term Pane Property Editor	152
Text Field Property Editor	152
Text Pane Property Editor	152

Preface

This manual introduces the Application Builder (referred to throughout this document as App Builder) and shows you how best to use it. See “Overview of the App Builder Process” on page 17 for a summary description.

Who Should Use This Book

This user’s guide is for anyone who wants to build or prototype a user interface with App Builder. Because you can easily create and modify user interfaces without writing any code using App Builder, it is a powerful tool for programmers and non-programmers—including user interface designers and project managers.

How This Book Is Organized

Chapter 1 includes an annotated picture of the App Builder primary window, an overview of the process of building an application, and instructions for starting App Builder.

Chapter 2 explains how to create, open, save, and close projects and modules, and how to hide and show modules.

Chapter 3 explains how to drag and drop objects from the object palettes, how to edit interface objects, and how to align and distribute control objects in the interface.

Chapter 4 explains how to edit object properties in the Revolving Property Editor.

Chapter 5 explains how to create and edit pane objects, menus, and message dialog boxes.

Chapter 6 explains how to create on-item help, how to create functional connections between objects, and how to establish drag and drop and application framework behavior.

Chapter 7 explains how to group control objects and how to attach objects to each other for dynamic resize behavior.

Chapter 8 explains how to change to test mode for testing certain App Builder functions.

Chapter 9 describes the Code Generator and explains how to generate code, make your application, and run it.

Appendix A describes the primary window, including its object palettes, and other App Builder windows, including the Project Organizer, the Module Browser, and the Code Generator.

Appendix B describes the Revolving Property Editor in general and each of the individual property editors specifically.

Ordering Sun Documents

Fatbrain.com, an Internet professional bookstore, stocks select product documentation from Sun Microsystems, Inc.

For a list of documents and how to order them, visit the Sun Documentation Center on Fatbrain.com at <http://www1.fatbrain.com/documentation/sun>.

Accessing Sun Documentation Online

The docs.sun.comSM Web site enables you to access Sun technical documentation online. You can browse the docs.sun.com archive or search for a specific book title or subject. The URL is <http://docs.sun.com>.

What Typographic Conventions Mean

The following table describes the typographic changes used in this book.

TABLE P-1 Typographic Conventions

Typeface or Symbol	Meaning	Example
AaBbCc123	The names of commands, files, and directories; on-screen computer output	Edit your <code>.login</code> file. Use <code>ls -a</code> to list all files. <code>machine_name% you have mail.</code>
AaBbCc123	What you type, contrasted with on-screen computer output	<code>machine_name% su</code> Password:
<i>AaBbCc123</i>	Command-line placeholder: replace with a real name or value	To delete a file, type <code>rm filename</code> .
<i>AaBbCc123</i>	Book titles, new words, or terms, or words to be emphasized.	Read Chapter 6 in <i>User's Guide</i> . These are called <i>class</i> options. You must be <i>root</i> to do this.

Shell Prompts in Command Examples

The following table shows the default system prompt and superuser prompt for the C shell, Bourne shell, and Korn shell.

TABLE P-2 Shell Prompts

Shell	Prompt
C shell prompt	<code>machine_name%</code>
C shell superuser prompt	<code>machine_name#</code>
Bourne shell and Korn shell prompt	<code>\$</code>
Bourne shell and Korn shell superuser prompt	<code>#</code>

Getting Started

App Builder is a development tool that makes designing, creating, and prototyping a user interface easier. App Builder gives you the freedom to create and try user interfaces without writing any code. Because you can create and modify an interface easily, you'll find that you can spend more time designing and testing, the surest route to better user interfaces.

- “Application Builder Primary Window” on page 15
- “Starting and Exiting App Builder” on page 16
- “Overview of the App Builder Process” on page 17
- “Object Types” on page 18
- “Rules for Dropping Objects” on page 19

Application Builder Primary Window

The Application Builder primary window, shown below, is the starting point for creating a user interface. See “App Builder Primary Window” on page 116 ,” for a detailed description of the primary window.

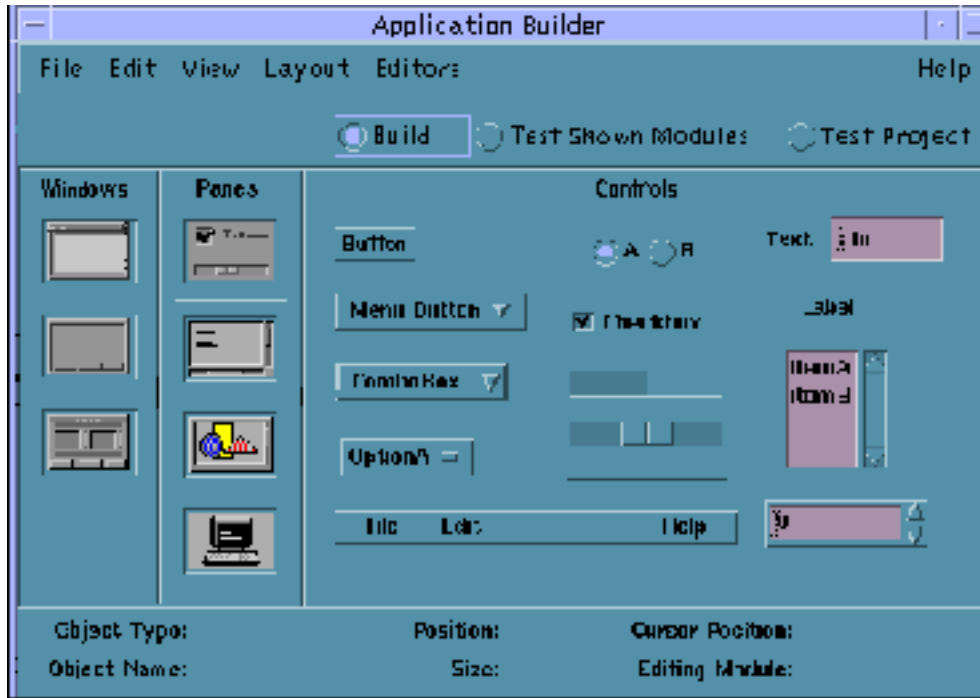


Figure 1-1 Application Builder primary window

The basic method for creating an App Builder user interface is to drag and drop objects from the App Builder primary window onto the workspace or onto other App Builder objects. See Chapter 3, " for details.

Starting and Exiting App Builder

▼ To Open App Builder from an Icon



- ◆ If App Builder has previously been open and the App Builder icon is on the workspace, double-click the icon to open App Builder.

- ◆ **If App Builder is installed on the Front Panel, click the App Builder icon in the Personal Applications subpanel to open App Builder.**

To install App Builder on the Front Panel, see “To Put an Application Icon in the Front Panel” in the Application Manager help volume for instructions.

▼ To Start App Builder from the Command Line

The command to run App Builder is `dtbuilder`. Do the following to start App Builder from the command line:

- ◆ **Type** `dtbuilder`
If `dtbuilder` is in your path, App Builder will start. If it is not in your path, you will need to type the full path name (which, by default, is `/usr/dt/bin/dtbuilder`) or change to the folder where `dtbuilder` is located before typing `dtbuilder`.

▼ To Exit App Builder

- ◆ **Choose Exit from the File menu of the App Builder primary window to quit App Builder.**

If you have not saved all changes, a message dialog box will be displayed, giving you the opportunity to discard the changes and continue the exit process or to cancel the exit process and continue running App Builder. Click Discard Changes if you do not want to save them. Click Cancel if you do not want to discard your changes; you could then save your changes and exit.

Overview of the App Builder Process

The basic process of building and maintaining a user interface with App Builder is simple and straightforward. There are many variations on this formula, but the process is similar for any application.

1. **Start App Builder. See “Starting and Exiting App Builder” on page 16.**
2. **Open a new project and a new module. See “Creating, Opening, and Saving Projects” on page 21.**

3. **Drag and drop windows (main windows and custom dialogs) to the workspace, creating a new module for each window, in most cases. See “Dragging and Dropping Palette Objects” on page 33.**
4. **Drag and drop panes onto main windows or custom dialogs. See “Dragging and Dropping Palette Objects” on page 33.**
5. **Drag and drop controls (buttons, choice objects, text fields, for example) onto control panes. See “Dragging and Dropping Palette Objects” on page 33.**
6. **Create pane objects, menus, and message dialogs. See Chapter 5.**
7. **Create help dialogs. See “Creating Help and Help Connections” on page 71.**
8. **Edit the properties of interface objects. See Chapter 4.**
9. **Make functional connections between objects in the user interface. See Chapter 6.**
10. **Go into test mode to test menus, help, and connections. See Chapter 8.**
11. **Display the Code Generator to generate code and make the user interface. See Chapter 9.**
12. **Add user code to the code generated by App Builder. See “Adding User Code to Generated Code” on page 113.**
13. **Debug the code, make and run the application.**
14. **Repeat the process to modify and maintain the user interface.**

Object Types

There are three basic types of objects on the primary window: windows, panes, and controls. See “App Builder Primary Window” on page 116 ,” for descriptions of each of the objects.

The windows in App Builder are:

- Main window
- Custom dialog

- File selection dialog

The panes in App Builder are:

- Control pane
- Text pane
- Draw area pane
- Term pane

The controls in App Builder are:

- Button
- Check box (Choice object)
- Combo box
- Gauge
- Label
- List (scrolling list)
- Menu bar*
- Menu button
- Option menu (Choice object)
- Radio box (Choice object)
- Scale
- Separator
- Spin box
- Text Field

Note - *The menu bar is not a control, but it is on the Controls palette. It can only be dropped on a main window.

Rules for Dropping Objects

The rules for dragging and dropping the three types of App Builder objects are explained below. An error message will be displayed if you attempt to drop an object on an illegal target.

Windows (main window, custom dialog, file selection dialog) can be dropped anywhere on the workspace except for the App Builder primary window.

Panes (control pane, text pane, draw area pane, term pane) can be dropped on a main window, a custom dialog, or on another pane. See “Creating and Editing Pane Entities” on page 47 for more information.

Controls (buttons, menus, boxes, for example) can be dropped on a control pane or a group.

Note - As noted above, a menu bar is on the Controls palette, but it is not really a control. It can only be dropped on a main window. A menu bar can be dropped anywhere on a main window; it will always appear at the top of the window.

Managing Projects and Modules

When you use App Builder to create a graphical user interface, you are working on a *project*, which is comprised of one or more *modules*. App Builder, which was built with itself, was a single project comprising over 30 modules.

- “Creating, Opening, and Saving Projects” on page 21
- “Creating, Importing, Exporting, and Saving Modules” on page 26
- “Showing, Hiding, and Removing Modules” on page 30

Creating, Opening, and Saving Projects

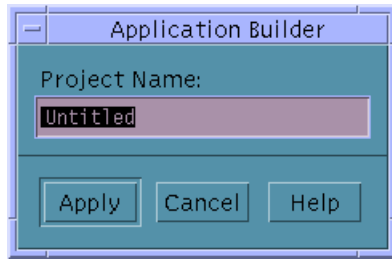
A project file is started when you choose New Project from the File menu of the App Builder primary window or New from the Project menu of the Project Organizer, or when you drag and drop a window onto the workspace in a new session of App Builder. See “Project Organizer” on page 125 for a description of the Project Organizer. See “Dragging and Dropping Palette Objects” on page 33 for a discussion of drag and drop procedures.

A project file is saved when you choose Save Project from the File menu of the App Builder primary window or when you select Save from the Project menu of the Project Organizer. A project file has a `.bip` (builder interface project) suffix.

▼ To Create a New Project

1. **Choose New Project from the File menu of the App Builder primary window or New from the Project menu of the Project Organizer.**

The Project Name dialog box will be displayed. By default, an unnamed project is called `Untitled`.



If you have made changes to the current project since you last saved it, a message dialog box will be displayed first, giving you the option to discard the changes and create the new project or to cancel the New Project operation.

Click Discard Changes to throw out the changes and close the current project.

Click Cancel if you want to save the current project. Save the current project before creating the new project.

2. Type a name (all lowercase) for the project and click Apply.

The name of the project (with `.bip` added as a suffix) will be displayed in the title bar at the top of the App Builder primary window. Every module you create or import will be part of the current project until you open another project.

Note - Project names should be all lowercase so that there is no conflict between the name of the project resource file and the project executable file. The name of the resource file created when you generate code is the same as the name of the project, minus the `.bip` suffix, but it is given an initial capital letter.

▼ To Open an Existing Project

1. Choose Open Project from the File menu of the App Builder primary window or Open from the Project menu of the Project Organizer.

The Open Project dialog box will be displayed.

If you have made changes to the current project since you last saved it, a message dialog box will be displayed first, giving you the option to discard the changes and open the other project or to cancel the Open Project operation.

Click Discard Changes to throw out the changes and close the current project.

Click Cancel if you want to save the current project. Save the current project before opening the other project.

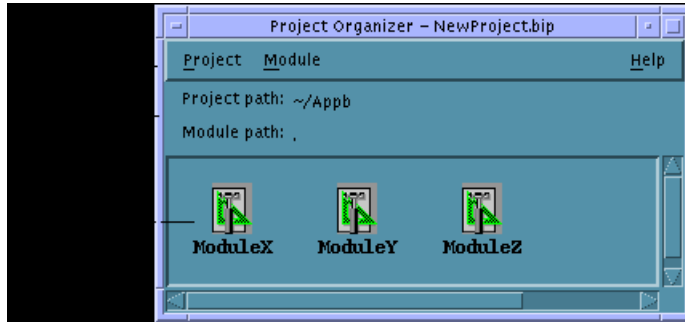
2. Change folders, if necessary.

You have to press Return or click Update before the folder change is registered.

3. Double-click the appropriate project file (.bip suffix) in the Files list

Or, select the file and click Open.

The name of the project will be displayed in the title bar of the App Builder primary window and the selected project will be displayed in the Project Organizer.



4. In the module array of the Project Organizer, select the modules you want to display and choose Show from the Module menu to display the module interfaces.

See "To Show a Hidden Module" on page 31 for detailed instructions.

▼ To Save a Project

A project is only saved when you explicitly choose to save it, so be sure to save often and regularly.

1. Choose Save Project from the File menu of the App Builder primary window or Save from the Project menu of the Project Organizer.

If you have saved the project before, the project will be saved without comment.

If this is the first time you have saved the project, the Save Project dialog box will be displayed.

2. Change to the appropriate folder.

You will normally want a separate folder for each project you work on. You are apt to have Makefile problems otherwise.

3. Type a file name in the Enter file name field.

You do not have to append .bip to the project name; this is done automatically when you save a project.

4. Click Save.

The project will be saved.

▼ To Save a Version of a Project

Do the following to save a version of the current project in a different folder. You might want to do this so that you can compare two versions of a project or put the two versions out for review. If you have made unsaved changes to the current project those changes will be saved in the new project only.

1. **Choose Save Project As from the File menu of the App Builder primary window or Save As from the Project menu of the Project Organizer.**

The Save Project dialog box will be displayed, with the current project name in the Enter file name field.

2. **Change to another folder.**
3. **Type a name in the Enter file name field.**
4. **Click Save.**

The project—the project file (.bip suffix) and all of the module files (.bil suffixes)—has been copied to another folder. The original project and module files are not affected. The new project will now be the current project; its name will be displayed in the title bar of the App Builder primary window.

▼ To Rename a Project

Do the following to give the current project a different name. The modules that comprise the current project will become part of a new project with a new name and *the current project will no longer exist*. See “To Save a Version of a Project” on page 24 above if you want to save a *version* of the the current project.

1. **Choose Save Project As from the File menu of the App Builder primary window or Save As from the Project menu of the Project Organizer.**

The Save Project dialog box will be displayed, with the current project name in the Enter file name field.

2. **Modify the name or type in a new name in the Enter file name field.**
3. **Click Save.**

A message dialog box will be displayed for each module in the project, telling you that the module exists and giving you the option to overwrite it or cancel the operation.

4. **Click Overwrite for each module if you want to rename the project and save the module.**

Click Cancel if you do not want to rename the project and overwrite the current module.

If you click Overwrite for each of the modules the project will be renamed; the new project name will be displayed in the title bar of the App Builder primary window. The old project file (.bip suffix) will still be in the folder, but it will not be the active project file. If you generate code for the project and run `make` in the folder, the new project name will be used.

▼ To Save a Project to a File (Encapsulate Project)

A project is comprised of one or more modules. Normally a project file is saved in a file with a .bip suffix, and each module file is saved in a separate file with a .bil suffix. To save a project as a single file (for convenience in mailing the project to someone, for instance):

1. **Open the project, as described in “To Open an Existing Project” on page 22 .**
2. **Choose Save Project As from the File menu of the App Builder primary window or Save As from the Project menu of the Project Organizer.**
3. **Change to the appropriate folder, if necessary.**
4. **Select Save As Encapsulated Project.**

The name of the current project will be displayed in the Enter file name field, with a .bix (builder interface exchange) suffix.
5. **Click Save or press Return.**

Note - When a project is saved as an encapsulated file, the .bip file is not affected. When an encapsulated project is opened in App Builder, it is opened just like any other project. When you attempt to save a project that was opened from an encapsulated file, a message dialog box will be displayed, explaining that the project will be saved as individual files. Choose Save Project As if you want to save it as an encapsulated project again.

▼ To Close a Project

- ◆ **Choose Close Project from the File menu of the App Builder primary window or Close from the Project menu of the Project Organizer.**

If you have made changes since saving the project a message dialog box will be displayed, giving you the chance to discard the changes or to cancel the close operation.

Creating, Importing, Exporting, and Saving Modules

A *module* is a logical unit of a project. Each window and dialog in App Builder is a module of the App Builder project, for instance. A module is created when you choose New Module from the File menu of the App Builder primary window or New from the Module menu of the Project Organizer.

You do not have to create a new module for each window, but in most cases you will want to: this will make maintaining modules simpler and will allow you to use a module for various applications.

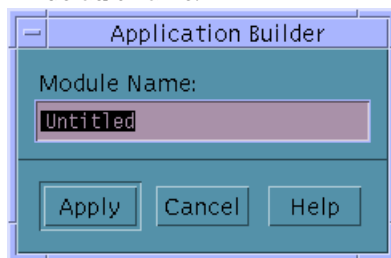
All module files in a project are saved when the project is saved. You can explicitly save a particular module by choosing Save from the Module menu of the Project Organizer. A saved module file has a `.bil` (builder interface language) suffix.

▼ To Create a New Module

Do the following to create a new module, which will become part of the current project.

1. **Choose New Module from the File menu of the App Builder primary window or New from the Module menu of the Project Organizer.**

The Module Name dialog box will be displayed, with Untitled selected as the default name:



Note - If you drag and drop a window on the workspace after creating a new project, the Module Name dialog box will be displayed, just as if you had chosen New Module from the File menu.

2. **In the dialog box, type in the name you want to give the new module.**
3. **Click Apply or press Return.**

The name of the new module will appear in the Editing Module field at the bottom of the App Builder primary window. Any windows you drag from the Windows palette and drop on the workspace will be part of the new module.

▼ To Import a Module into a Project

To import an existing module into the current project:

1. **Choose Import Module from the File menu of the App Builder primary window or Import from the Module menu of the Project Organizer.**

The Import File dialog box will be displayed.
2. **Change to the folder where the module (.bil suffix) file is saved.**
3. **Change the Import Format type, if necessary.**

By default, BIL format is selected. If the file you are importing is a UIL file, click the UIL button. The file will be converted to BIL format when it is imported.
4. **Change Import By method, if necessary.**

By default, Import By Copy is selected. If you want to import the module by reference rather than making a copy of it, click the Reference button.

Note - Import By Reference, which causes module files to be shared, can be dangerous, since the actual module file may be changed or deleted inadvertently.

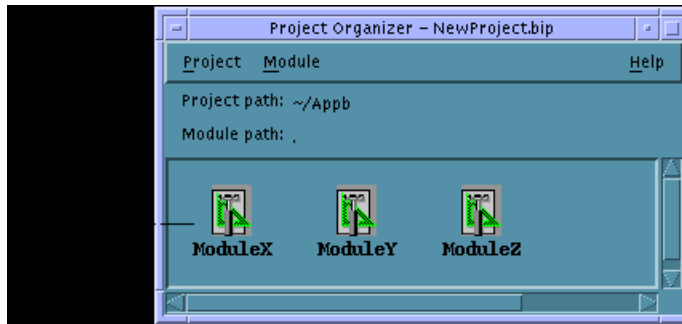
5. **Double-click on the module to be imported in the Files list.**

Or, select the file and click Import.
The module will be added to the current project the next time you save the project.

▼ To Save a Module

All modules in a project are saved when you save the project. If you want to save individual modules, you can do so in the Project Organizer.

1. **Display the Project Organizer by choosing Project Organizer from the File menu of the App Builder primary window.**



2. **In the module array of the Project Organizer select the module you want to save.**

3. **Choose Save from the Module menu.**

If you have saved the module previously during this App Builder session, the module will be saved without comment.

If this is the first time you have saved the module, the Save BIL File dialog box will be displayed, with the name of the selected module (with a `.bil` suffix) in the Enter file name field.

4. **Change to the folder where you want to save the module, if necessary.**
5. **Click Save or press Return.**

▼ To Rename a Module

Use Save As from the Module menu of the Project Organizer to rename a module. When you save the current project, the new module name will replace the old name in the project (`.bip`) file. The original module will still be in the project folder, but it will not be part of the project. To save a module without affecting the project, see “To Export a Module” on page 29.

1. **Display the Project Organizer by choosing Project Organizer from the File menu of the App Builder primary window.**

2. **Select the module you want to rename.**
3. **Choose Save As from the Module menu.**

The Save BIL File dialog box will be displayed, with the name of the selected module (with a `.bil` suffix) in the Enter file name field.
4. **Type a file name in the Enter file name field.**
5. **Click Save or press Return.**

The new module name will replace the old name in the project (`.bip`) file the next time you save the project.

▼ To Export a Module

Do the following to save a *copy* of a module in the current project. The current project is not affected when you export a module. A new module is created, which is not part of the current project; the original module remains as part of the project.

1. **From the File menu of the App Builder primary window choose Export Module and select one of the currently open modules from the submenu displayed.**

Or, in the Project Organizer select the module to be exported in the module array and choose Export from the Module menu.

The Export File dialog box will be displayed, with the selected module name in the Enter file name field.
2. **Type a new file name in the Enter file name field**

Or, change to the folder where you want to save the module and type a file name in the Enter file name field.

If you want to save a version of the module in the current folder, do not change folders. Simply give the module a different name.
3. **Click Export or press Return.**

A copy of the selected module has been created.

▼ To Save a Module in UIL Format

To save a module in UIL (user interface language) format instead of BIL (builder interface language) format:

1. **Choose Export Module from the File menu of the App Builder primary window and select the module you want to export from the submenu that is displayed.**

Or, in the Project Organizer select the module to be exported and choose Export from the Module menu.

The Export File dialog box will be displayed, with the selected module name in the Enter file name field.

2. Change to the folder where you want to save the module, if necessary.

3. Select Save As UIL (above the Enter file name field).

The file name suffix will change from .bil to .uil.

4. Type a file name in the Enter file name field, if necessary.

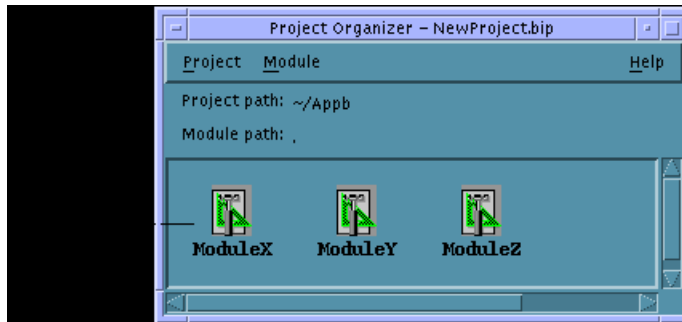
If the name in the Enter file name field is OK, leave it as it is.

5. Click Export or press Return.

The file will be saved with a .uil suffix.

Showing, Hiding, and Removing Modules

For a small project you may always want to show all modules. For a large project with many modules you may want to show only one or two modules at a time. Use the Project Organizer to show and hide modules, and to remove modules from projects. The Project Organizer displays icons for all of the modules that comprise a project. In the Project Organizer you can display or hide the interfaces for selected modules and you can remove modules from a project.



▼ To Show a Hidden Module

1. **Display the Project Organizer by choosing Project Organizer from the File menu of the App Builder primary window.**
2. **Double-click the module icons in the module array of the Project Organizer that you want to show.**
Or, select the module icons and choose Show from the Module menu.
The user interfaces for the selected modules will be displayed.

Note - If a module you want to show is in a different project, you will first have to open the other project. See “To Open an Existing Project” on page 22 for instructions.

▼ To Hide a Shown Module

To hide a module that is displayed (to clean up the workspace so that you can more easily work on another module, for instance):

1. **Display the Project Organizer by choosing Project Organizer from the File menu of the App Builder primary window.**
2. **Select the modules in the module array that you want to hide.**
Select one module by clicking mouse button 1 on it. To add to the selection click mouse button 2 on other modules. To select a number of adjacent modules drag-select with mouse button 1 or mouse button 2, starting above and to the left of the first module to be selected.
3. **Choose Hide from the Module menu.**
The user interfaces for the selected modules will be hidden.

▼ To Remove a Module from a Project

When you remove a module from the current project, the module file will still exist in the project folder, but it will no longer be part of the project. The module file name will be removed from the project file (.bip suffix) the next time the project is saved. With the appropriate project open, do the following to remove one or more modules from the project.

1. **Display the Project Organizer by choosing Project Organizer from the File menu of the App Builder primary window.**

2. **Select the modules in the module array that you want to remove.**
3. **Choose Remove from the Module menu of the Project Organizer.**

Laying Out a User Interface

The basic App Builder process for laying out an interface is to drag objects from the App Builder primary window and drop them on the workspace or on other App Builder objects.

See Appendix A for a full description of the primary window and its elements, and for a description of the Module Browser.

- “Dragging and Dropping Palette Objects” on page 33
- “To Create a Main Window, Custom Dialog, or File Selection Dialog” on page 34
- “To Create a Window With a Spanning Control Pane” on page 34
- “Selecting Interface Objects” on page 35
- “Editing Objects in the Interface or in the Browser” on page 37
- “To Cut or Copy Objects” on page 37
- “To Paste Objects” on page 37
- “Aligning and Distributing Objects in an Interface” on page 38

Dragging and Dropping Palette Objects

The rules for dropping palette objects are simple; they are enforced by error messages when they are violated.

- Windows (main window, custom dialog, file selection dialog) are dropped on the workspace.
- Panes (control, draw area, text, and term) are dropped on windows or on other panes.

- Controls (buttons, boxes, choice objects, and others) are dropped on a control pane. The menu bar, which is on the Controls palette, is not strictly a control; it is dropped on a main window only.

▼ To Create a Main Window, Custom Dialog, or File Selection Dialog

1. **Drag a main window, custom dialog, or a file selection dialog box from the Windows palette and drop it on the workspace.**

If you haven't previously named the module, the Module Name dialog box will be displayed. Move the cursor to the Module Name dialog box, type a name, and click Apply.

The module name will be displayed in the status area at the bottom of the window.

2. **Edit the properties of the window object, if necessary.**

This can be done now or later. See "To Edit Properties of an Object" on page 42 for general instructions. See "Example: Editing Main Window Properties" on page 44 for specific instructions for a main window or a primary main window.

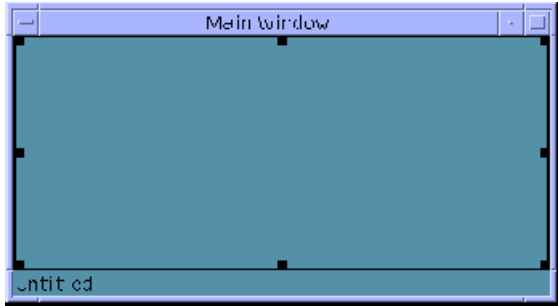
▼ To Create a Window With a Spanning Control Pane

Often you will want a control pane to fill the entire blank pane area of a main window or custom dialog. You can then drop controls or other panes on the control pane to create a complex window such as the App Builder primary window. Do the following once you have dropped a main window or custom dialog on the workspace.

1. **Drag a control pane from the Panes palette and drop it on the top-left corner of the main window or custom dialog.**



2. Drag the bottom-right corner of the control pane (an arrow pointing towards a corner will be displayed) beyond the bottom-right corner of the window and release mouse button 1.



The control pane will be attached to the four sides of the window. If you resize the window, the control pane will be resized with it.

See “To Attach Objects in an Interface” on page 100 for details about attachments.

Selecting Interface Objects

For many actions, including editing, moving, aligning, and grouping, you need to select one or more objects in an interface. You can only multiply-select *siblings*—objects that are children of the same parent. (All windows in a project are siblings, for instance, as are panes in a window and control objects in a single control pane. Panes that are dropped on a control pane and created as children of the control pane function like control objects in the control pane.)

You can select objects in the interface or in the Module Browser. See “Module Browser” on page 126 for a description of the Browser. See “Editing Objects in the Interface or in the Browser” on page 37 for information about cutting, copying, and pasting interface objects.

Only control objects can be grouped or aligned (using the Align and Distribute functions).

▼ To Select Window or Pane Objects in the Interface or the Browser

Selecting an object in the Module Browser also selects it in the interface, and vice versa.

- Select a single window (main window, custom dialog, or file selection dialog box) by clicking mouse button 1 on the object in the Browser or in the interface (click in the status area at the bottom of the window object).
- Select an additional window by clicking mouse button 2 on the window in the browser or in the interface.
- Select a single pane by clicking mouse button 1 on the pane in the Browser or in the interface.
- Select additional panes in the same window by clicking mouse button 2 on the pane in the Browser or in the interface.

▼ To Select Control Objects in the Interface or the Browser

Selecting an object in the Module Browser also selects it in the interface, and vice versa.

- Select one object by clicking it in the interface or in the Module Browser.
- Select a number of adjacent objects by positioning the mouse cursor above and to the left of the objects, pressing mouse button 1, and dragging the mouse to encompass other objects down and to the right of the first object.
- Add or subtract an object to the current selection by clicking mouse button 2 on the object.

If an object is selected, clicking mouse button 2 on it deselects it.

- To add a number of adjacent objects to those that are selected, position the mouse cursor above and to the left of the objects to be added, press mouse button 2, and drag the mouse to encompass other objects down and to the right of the first object.
- To deselect all but one object, click mouse button 1 on an object.
Only that object will be selected.

Note - When you have selected a number of objects in the interface, all the objects will move if you press mouse button 1 on one of the objects and move the mouse. A rectangular border will be drawn around the objects as you move the mouse.

Editing Objects in the Interface or in the Browser

Once you have created an interface by dragging and dropping objects on the workspace or on other App Builder objects, you may want to edit the interface in various ways. You can cut, copy, paste, and delete objects, and you can undo the last editing function performed—and you can perform these functions in the interface or in the Module Browser, or between the interface and the Browser. See “Module Browser” on page 126 for a description of the Browser.

You can copy or cut any object you can select—from a single control to a complex window with multiple panes and many controls—and you can paste that object in any open module.

Note - Objects selected in the interface are also selected in the Browser, and vice versa. See “To Select Control Objects in the Interface or the Browser” on page 36 for instructions for selecting objects. When you edit objects in the Module Browser, be sure to check to see what is happening in the interface—especially if you are cutting and pasting.

▼ To Cut or Copy Objects

1. **Select the objects you want to edit in the interface or the Browser.**

2. **Choose Cut or Copy from an Edit or pop-up menu.**

Choose Cut or Copy from the Edit menu in the App Builder primary window, from the Edit menu in the Module Browser, or from the pop-up menu in either the primary window or the Browser (displayed by pressing mouse button 3 in the interface or the Browser).

The chosen function (cut or copy) will be performed. If you choose Cut, the selected objects will be deleted from the interface and placed in the App Builder edit buffer. If you choose Copy, the selected objects will be placed in the edit buffer.

Choose Undo before performing any other function to cancel the cut or copy operation.

▼ To Paste Objects

Once you have placed objects in the edit buffer by cutting or copying, you can paste the objects in the interface with the Paste function.

1. **Select the paste location.**

Window: Windows can be pasted if any App Builder object is selected. *Pane:* Panes can be pasted if an App Builder window or control pane is selected. *Control:* Controls can be pasted if an App Builder control pane or control object is selected. If a control object is selected, the controls will be pasted in the parent control pane.

2. **Choose Paste from the Edit menu in the App Builder primary window, from the Edit menu in the Module Browser, or from the pop-up menu in either the primary window or the Browser (displayed by pressing mouse button 3 in the interface or the Browser).**

The objects will be added to the current module and will be displayed appropriately in the interface.

Note - Pasted objects may obscure other objects; you may have to do some moving and aligning after the paste. See “Aligning and Distributing Objects in an Interface” on page 38 for instructions.

Choose Undo before performing any other function to cancel the paste operation.

▼ To Delete Objects

1. **Select the objects you want to delete in the interface or the Browser.**

2. **Choose Delete from the Edit menu in the App Builder primary window, from the Edit menu in the Module Browser, or from the pop-up menu in either the primary window or the Browser (displayed by pressing mouse button 3 in the interface or the Browser).**

The objects will be deleted from the interface.

Choose Undo before performing any other function to cancel the delete operation.

Aligning and Distributing Objects in an Interface

This section describes “static” alignment and distribution of objects: the objects are aligned or distributed one time only. See Chapter 7, for instructions to find out how to group and attach objects for “dynamic” alignment.

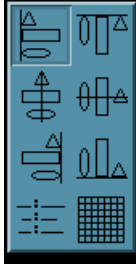
▼ To Align Control Objects in an Interface

1. Select two or more objects.

See “To Select Control Objects in the Interface or the Browser” on page 36 for instructions.

2. Choose **Align** from the **Layout** menu of the **primary window** or the **interface pop-up menu** (displayed by pressing mouse button 3) and select one of the **alignment icons** from the submenu.

The selected objects will be aligned according to the alignment choice. Choices are described below. Vertical alignment icons are on the left and are described first.



- Left-edge: Aligns selected objects vertically along their left edges.
- Vertical-center: Aligns selected objects vertically on their horizontal centers.
- Right-edge: Aligns selected objects vertically along their right edges.
- Colon: Aligns selected objects vertically along their colons or labels.
- Top-edge: Aligns selected objects horizontally along their top edges.
- Horizontal-center: Aligns selected objects horizontally on their vertical centers.
- Bottom-edge: Aligns selected objects horizontally along their bottom edges.
- Grid: Does no alignment at this time.

Note - If you select objects that are arranged horizontally and choose a vertical alignment (or vice versa), the objects will end up on top of one another. You can unstack the objects by choosing **Distribute** from the pop-up menu immediately after the align function (the objects will still be selected). See “To Distribute Control Objects Evenly” on page 39 for instructions.

▼ To Distribute Control Objects Evenly

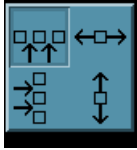
1. Select one or more objects.

See “To Select Control Objects in the Interface or the Browser” on page 36 for instructions. Select one object to center it between the edges of its parent.

2. Choose **Distribute** from the **Layout** menu of the primary window or the interface pop-up menu (displayed by pressing mouse button 3) and select one of the distribute icons from the submenu.

The selected objects will be distributed or centered according to your choice.

Objects will be spaced 10 pixels apart horizontally or vertically if you choose one of the distribute choices. If you choose one of the centering choices, the object or objects will be centered within the boundaries of the parent control pane.



- Horizontal-space: Distributes selected objects horizontally 10 pixels apart. The left-most object is the anchored object, which does not move.
- Vertical-space: Distributes selected objects vertically 10 pixels apart. The top-most object is the anchored object, which does not move.
- Horizontal-center: Centers selected objects horizontally between the left and right edges of the parent object, maintaining the distance between selected objects.
- Vertical-center: Centers selected objects vertically between the top and bottom edges of the parent object, maintaining the distance between selected objects.

Editing Properties of Interface Objects

All objects dragged from the App Builder palettes have *properties* that can be edited. These properties include object name, color, and a variety of other characteristics, depending on the object type. Once you have dropped an object or have created an object in the interface, you will want to customize the object by editing it in the Revolving Property Editor. See Appendix B, for an illustration of a property editor and descriptions of each of the elements in all of the property editors.

- “To Open a Property Editor” on page 41
- “To Edit Properties of an Object” on page 42
- “To Display a Fixed Property Editor” on page 43
- “Example: Editing Main Window Properties” on page 44

Property Editor Procedures

The following procedures explain how to open and manipulate the Property Editor.

▼ To Open a Property Editor

- Double-click an object in the interface or in the Module Browser to open the Revolving Property Editor with the clicked-on object selected.
- *Or*, select an object in the interface or in the Module Browser and choose Props (Revolving or Fixed) from the pop-up menu (displayed by pressing mouse button 3 in the interface or the Browser) to open the property editor with the object selected.
- *Or*, choose Properties from the Editors menu in the App Builder primary window.

The Revolving Property Editor will be displayed, with the object most recently selected in the interface or the Module Browser selected in the Revolving Property Editor.

▼ To Edit Properties of an Object

Once you have displayed the property editor, do the following to edit the properties of an object:

1. **Choose the object type that you want to edit from the Object Type menu at the top of the Revolving Property Editor, if necessary.**

If you double-clicked an object to display the Revolving Property Editor or if the object was selected when you chose Props from one of the pop-up menus, the object type and the specific object will already be selected.

If a tear-off (Fixed) editor is displayed, there is no Object Type menu.

2. **Select the object that you want to edit in the Objects scrolling list, if necessary.**

The object may already be selected.

3. **Modify any of the properties, as appropriate.**

See Appendix B for descriptions of each of the elements of the property editors.

Note - List item editing: once you have the appropriate number of items in the list, the easiest way to perform item editing in those property editors that have an item list* is to select the first item in the list, thus selecting it in the label text field. Type a new name for the item and click Return. The new name will be displayed in the item list and the next item in the list will be selected. Continue down the list with this select, type, Return sequence until all items are completed.

*Property editors with item lists include the choice objects (Radio Box, Check Box, Option Menu), Combo Box, List, Menu, Menubar, and Spin Box.

4. **Click the Apply button to apply the changes and leave the property editor displayed.**

Click the OK button to apply the changes and close the property editor.

Click Reset to reset all changed elements to their values at the last Apply.

Click Cancel to reset all elements to their values at the last Apply and close the property editor.

See “Example: Editing Main Window Properties” on page 44 for specific instructions for editing the properties of a main window.

▼ To Display a Fixed Property Editor

The Revolving Property Editor is a single dialog box that displays one of 20 property editors, depending on the item you choose from the Object Type option menu. To display a separate, fixed property editor of a specific object type:

1. **Select the object you want to edit in the interface or in the Module Browser.**
See “Module Browser” on page 126 for a description of the Browser.
2. **Choose Props from the pop-up menu (displayed by pressing mouse button 3 in the interface or in the Module Browser) and select Fixed from the Props submenu.**
A fixed version of the property editor for the selected object type will be displayed.

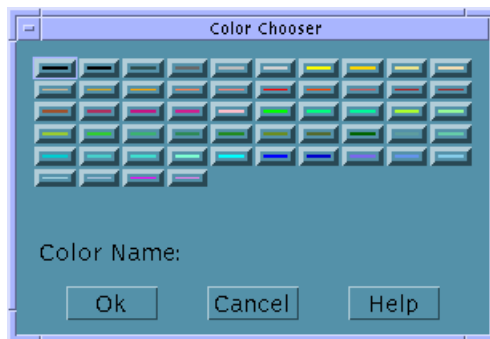
Or

1. **Choose the object type you want to edit in the Object Type menu of the Revolving Property Editor.**
2. **Click the Tear-off button at the top-right of the Revolving Property Editor.**
A fixed version of the property editor for the selected object type will be displayed.

▼ To Select Colors From the Color Chooser

Most property editors have background and foreground color properties. If you know the name of the color you want to use, type it in the text field next to Color:Background or Color:Foreground. To select a color from the Color Chooser palette:

1. **Click the Background or Foreground menu button and choose Color Chooser.**
The Color Chooser, with an array of color choices available, will be displayed.



2. **Click the desired color in the palette.**
The name of the selected color will be displayed after Color Name.
3. **Click OK to select the color and dismiss the Color Chooser.**
The selected color will be displayed in the rectangle next to the Background or Foreground menu and the name of the color will be displayed in the text field next to the colored rectangle.
4. **Repeat the process for Background or Foreground, if desired.**
5. **Click Apply in the property editor to apply the changes.**
The background or foreground of the object in the interface will display the selected color.

Example: Editing Main Window Properties

Use the procedure for editing a main window below as an example for editing other object types.

Your application might have multiple main windows, but only one *primary* main window, which is the starting point for the application. By default, the first main window created in the current project is designated as the primary main window. This designation can be changed in the Application Framework Editor, described in “To Establish Application Framework Behavior” on page 88.

▼ To Edit Properties of a Main Window

Once you have dropped a main window on the workspace do the following to edit its properties. See Appendix B for descriptions of each of the elements of the property editor.

1. **Double-click the main window to display the Revolving Property Editor.**
Or, Choose Properties from the Editors menu of the App Builder primary window, choose Main Window from the Object Type menu, and select the main window in the Objects list.
The main window will be selected in the Revolving Property Editor.
2. **Change the Object Name, if necessary.**

3. Change the Window Title to something appropriate.

This is the label that appears in the title bar of the main window.

4. Type the names of an Icon File, an Icon Mask File, and an Icon Label, if you want an icon to represent the window when it is minimized.

The Icon File and Icon Mask File must be `xpm` or `xbm` graphics files.

5. Change the User Resize Mode, if appropriate.

This determines if a user can resize the window in the compiled application.

6. Select Menubar, Toolbar, and Footer, as appropriate, to add these functional areas to the window.

If you select Menubar, you will want to create menus after you finish editing main window properties. See “Creating and Editing Menus” on page 52 for instructions.

Note - Selecting Menubar is the same as dragging a menu bar from the Controls palette and dropping it on a main window.

If you select Toolbar or Footer, you will want to edit the properties of the control panes that comprise these objects after you finish editing main window properties. You can drop controls on the control panes, make connections to programmatic actions, and do other things that can be done to any control pane.

7. Change the Size Policy and Size, as appropriate.

Note - For all main windows and custom dialogs you will probably want to leave the Size Policy as Fixed while you are creating the application, and change it to Fit Contents as you finish the application, for internationalization and other purposes. When Size Policy is Fit Contents, the window will change size to accommodate changes in the size of objects as the text in the objects changes—or if the font size changes, for example.

8. Set Initial State to Iconic if you want the application to appear as an icon when it is started.

9. If you want the main window to be invisible when the application is started, deselect the visible setting for Initial State.

If the Visible check box is checked, click it to deselect it.

10. Set Background and Foreground colors, if appropriate.

Type in a color name if you know it or press mouse button 1 on the Background or Foreground menu button and choose Color Chooser to display the Color Chooser. Select a color and click OK. Background sets the color of the blank pane area of the window. Foreground does nothing that is visible in the completed interface.

11. Click Help Text to add on item help, if appropriate.

See “To Create Help” on page 72 for instructions.

12. Click OK to apply the changes and dismiss the Revolving Property Editor.

Unless you are creating a primary main window, you are finished with this task.

13. If you are creating a primary main window, choose Application Framework Editor from the Editors menu.

14. Type a Vendor Name and Version number in the Application section of the Application Framework Editor, if appropriate.

See “To Establish Application Framework Behavior” on page 88 for details about the editor.

15. Click OK in the Application Framework Editor to apply the changes and close the editor.

Creating and Editing Panes, Menus, and Messages

Most App Builder objects are dragged from the windows, panes, or controls palettes. Some objects (layered panes, paned windows, menus, and messages) are *created* objects. This chapter explains how to create, use, and edit these objects.

- “Creating and Editing Pane Entities” on page 47
- “Layered Panes” on page 48
- “Paned Windows” on page 49
- “Creating and Editing Menus” on page 52
- “Menu Property Editor” on page 52
- “Creating and Editing Messages” on page 61
- “Message Editor” on page 61
- “Example: Writing Code for Messages” on page 66

Creating and Editing Pane Entities

There are four types of pane objects on the Panes palette of the App Builder primary window: control pane, text pane, draw area pane, and term pane. In addition, there are three types of *created* pane entities: child panes, layered panes, and paned windows.

Child Panes

A *child pane* is a text pane, term pane, or draw area pane that has been dropped on a control pane and made a “child” of the control pane. In App Builder, for example, the Label field in the Label Property Editor is a text pane that is a child of a control pane.

▼ To Create a Child Pane

1. **Drop a text pane, draw area pane, or term pane on a control pane in the interface.**

A message dialog box will be displayed, asking if you want to create the dropped pane as a child of the control pane or as a layered pane.

Click Cancel if you do not want to create a child pane or a layered pane.

2. **Click Child.**

The pane will be instantiated at the drop location, just as if it were a control object. The pane will be a sibling of the control objects on the control pane. You will be able to select the pane and move it around on the control pane just like any other control object.

Layered Panes

A *layered pane* is a “stack” of two or more panes, one on top of the other. In App Builder, for example, the Revolving Property Editor, which is used to display the properties of each of the interface objects, is a layered pane.

▼ To Create a Layered Pane

1. **Drop a pane on another pane in the interface.**

A message dialog box will be displayed, giving you the option to create a layered pane.

If you have dropped a text pane, draw area pane, or term pane on a control pane, you will also have the option to create the object as a child of the control pane.

Click Cancel if you do not want to create a child pane or a layered pane.

2. **Click Layer.**

The pane will be instantiated as a layered pane on top of the pane it was dropped on. Because it is the same size as the original pane, it will obscure the original pane completely. If you resize one of the layers of a layered pane, all panes are resized. See “To View Layered Panes” on page 49 for instructions for viewing the layers of a layered pane.

Once you have completed the interface you may want to change the Size Policy of any panes in a layered pane to Fit Contents (the default value is Fixed, which

should be retained until the interface is complete). Each of the panes might be a different size.

Note - There is no direct way to *unmake* a layered pane, but you can accomplish the task by selecting one of the layers and choosing Cut from the Edit menu of the App Builder primary window or from one of the pop-up menus (displayed by pressing mouse button 3 in the interface or in the Module Browser).

If you want to save the layer you cut, select an empty window and choose Paste from the Edit menu. Repeat the Cut and Paste process until there are no more layers (this is easiest to see in the Browser). If you don't want to save the layers, choose Delete instead of Cut.

▼ To View Layered Panes

Only one layer of a layered pane is visible. To view other layered panes:

1. **Select the visible pane of the layered panes in the interface or in the Module Browser.**

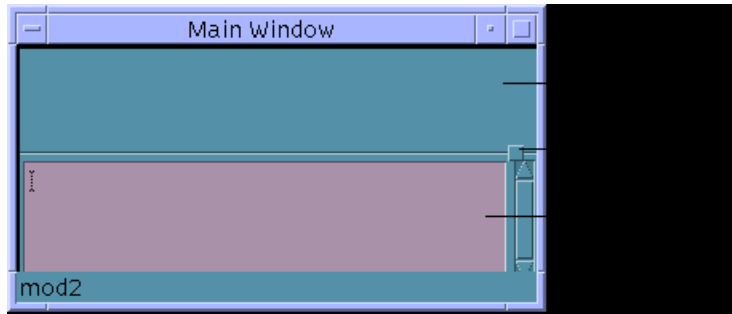
Note - Selecting a layered pane in the Browser does not pop the selected pane to the top of the stack of panes in the interface.

2. **Choose NextLayer from the View menu of the primary window or from the interface pop-up menu (displayed by pressing mouse button 3).**

The layer immediately beneath the current pane will be displayed. Repeat this step to view other layers.

Paned Windows

A *paned window* is a combination of two or more panes (control, text, draw area, or term panes, in any combination) into one virtual window with multiple panes, one above the other, separated by a movable sash. While the paned window maintains a constant height, the individual panes become smaller or larger as you move the sash between them.



A paned window's initial size and position are determined by the position and size of its panes: the left margin of the paned window is determined by the left (West) edge of the pane that is furthest to the left. The width of the paned window is determined by the width of its widest pane.

You can set limits on the minimum and maximum heights of any of the panes by setting **Pane Height** in the **Paned Window** property editor. See Appendix B for more details.

Once you have created a paned window you can resize the panes by pressing mouse button 1 or mouse button 2 on the sash and moving it up or down.

▼ To Create a Paned Window

- 1. Drag a pane from the Panes palette and drop it on a main window or a custom dialog.**

If you want the paned window to span the top of the parent window, drop the pane on the top-left corner of the parent. The pane will be attached to the window at its left and top margins with an offset of 0.

- 2. Resize the pane, if necessary.**

If you want the paned window to span its parent window, drag the right edge of the pane beyond the right edge of the window. The pane will be attached to this edge, also.

- 3. Drag one or more additional panes to the main window or dialog and drop them on an unoccupied portion of the window.**

- 4. Select all panes that you want to be part of the paned window.**

Use mouse button 1 to select one pane and mouse button 2 to select additional panes.

- 5. Choose **Make Paned Window** from the **Layout** menu or from the interface or **Module Browser pop-up** menu (displayed by pressing mouse button 3).**

The paned window will be created.

Note - If one of the panes is attached to the right (East) edge of its parent and one or more of the other panes are not attached to the right edge of the parent, the right edge of the panes *not* attached to the right edge will be attached to the right edge. A message dialog box will be displayed, explaining that the children of the paned window have different East attachments and that the East attachment has been set to that of the rightmost pane. You can adjust the right attachment in the Attachments Editor. Click OK.

▼ To Add a Pane to a Paned Window

1. Drop a pane on the paned window.

A message dialog box will be displayed, giving you the option to include the new pane as a child of the control pane (if you drop a text pane, draw area pane, or a term pane on a control pane), create as a layered pane, or to add it to the paned window.

2. Click Pane to add the pane to the paned window.

The new pane will be added to the bottom of the paned window.

▼ To Unmake a Paned Window

1. Select the paned window.

Select a paned window by clicking at its edge. Be sure you select the paned window and not one of its panes. You will know you have selected the paned window if a dark box is drawn around the paned window.

Or, open the Module Browser and select the paned window there. This is the easiest, surest way to select a paned window.

2. Choose Unmake Paned Window from the Layout menu or from the pop-up menu in the interface or the Module Browser (displayed by pressing mouse button 3).

The panes that made up the paned window will become separate panes again.

Creating and Editing Menus

A *menu* is a list of items with meaningful labels. Each item is connected to a function which is performed when the menu is displayed and the item is selected. This section explains how to create and edit menus, how to attach menus to objects, and how to connect menu items to programmatic functions.

Menus can be attached to menu buttons, menubar items, lists, and any of the four types of panes. A menu is automatically attached to an option menu, so there is no need to attach a menu to it.

Menu Property Editor

The Menu Property Editor is used to create menus. A menu, unlike most of the objects edited in the Revolving Property Editor, is a created object and is not available from the object palettes.

Only properties unique to a menu object are described here. See “Property Editor: Universal Properties” on page 134 for descriptions of Object Type, Objects, Object Name, and Color. See “Property Editor: Common Properties” on page 135 for descriptions of Items, Label, and Item State (Active).

Add New Menu	Adds a new menu to the list of menus.
Edit	Performs edit functions (Cut, Copy, Paste, Delete) on the selected item in the list of menu objects. Cut and Copy place the selected item in a buffer, ready for Paste. Delete removes the item, but does not place it in a buffer.
Tearoff	Specifies whether tearoff is Enabled or Disabled. If tearoff is enabled the selected menu will be "postable." That is, the menu will be displayed until you explicitly dismiss it if you click on the Tearoff indicator (a dotted line).
Item Label Type	Specifies the type of label (String, Graphic, or Separator) for the item selected in the Items list. If Graphic is chosen, Label becomes Graphic Filename. If Separator is chosen, Label or Graphic Filename becomes inactive and Line Style becomes active. A Separator menu item is used to create a visual division in a menu, such as that

seen in the Editors menu of the App Builder primary window.

Item Mnemonic

Specifies one of the letters in the selected item as a keyboard shortcut for choosing the item when the menu is posted. The letter specified will be underlined. Pressing the mnemonic letter when the menu is posted causes that item to be chosen. Note that case is significant and that a particular letter can be used as a mnemonic only once within a menu.

Accelerator

Specifies a keyboard shortcut for choosing the selected item. An accelerator is comprised of a prefix (Ctrl, Alt, Meta, or Shift), <Key>, and a letter (uppercase or lowercase). To make Control-x an accelerator, for instance, type the following:

```
Ctrl<Key>x
```

When you display the menu in test mode or in the compiled application, Ctrl+x will be included to the right of the menu item label. If you press the Control key and type x with focus in the window that contains the menu, the action specified in the menu item will be performed.

You can combine the Shift key with one of the other keys to form a compound prefix, if you wish. To make Shift Control-x an accelerator, type the following:

```
Shift Ctrl<Key>x
```

Line Style

Specifies the type of line style for the selected separator item; active only when Item Label Type is Separator. Choices are None, Etched In, Etched Out, Etched In Dash, Etched Out Dash, Single Line, Double Line, Single Dashed Line, and Double Dashed Line. A separator of the chosen line style will be displayed in the menu instead of a graphic or text label.

Item SubMenu

A menu button and a text field for attaching, de-attaching, creating, or editing a submenu for the selected item in the Items list. If a submenu is

attached to the selected item, the name of the submenu will be displayed in the text field. Not valid for separator item type.

▼ To Create a Menu

This description assumes you are creating a menu and attaching it to an interface object as two separate procedures. To combine these procedures, see “To Create and Attach a Menu” on page 57.

Note - Menus are available within modules only. Be sure the menu created is in the same module as the object you wish to attach the menu to. Menus are created in the *current module*, which is determined by what is selected in the interface. The Editing Module field in the object information area of the App Builder primary window indicates the current module.

1. Display the Menu Property Editor by choosing Menus from the Editors menu in the App Builder primary window.

Or, display the Revolving Property Editor and choose Menu as the Object Type. Choosing Menus from the Editors menu in the primary window is the same as clicking the Tear-off button in the Revolving Property Editor when the Object Type is Menu.

See “Menu Property Editor” on page 52 for a description of the editor.

If no menus exist in the current project, the Menu Objects list will be blank and only the Add New Menu and Edit buttons will be active.

If any menus exist in the current project, they will be listed in the Menu Objects list. One of the menus will be selected in the list and the menu’s properties will be displayed for editing.

2. Click Add New Menu.

A menu will be created with a default Object Name (“menu,” “menu2,” and so on, depending on how many menus there are in the current module), and with two items in the Items list (“Item1” and “Item2”). The menu will be added to the end of the Menu Objects list, with the name of the current module preceding the menu name. The menu will have default values for Object Name, Tearoff, Items, Item Label Type, Label, and Item State.

If you know you are going to need a number of menus, you could create them all at the same time by clicking Add New Menu the appropriate number of times.

You can also create menus that will be used as submenus, to be attached to menu items, at this time.

3. Edit the menu, as described in “To Edit a Menu” on page 55.

You can edit the menu immediately after creating it or you can edit it later.

After you have created and edited a menu you will want to attach it to an interface object and make the menu functional by creating connections between menu items and specific actions. See “To Attach an Existing Menu to an Object” on page 56 and “Connecting Menu Items to Actions” on page 77 for instructions. See “To Attach an Existing Submenu to a Menu Item” on page 58 if you want to attach a submenu to a menu item.

▼ To Edit a Menu

After creating a menu you will need to edit the menu: add menu items, give the menu items meaningful names, add submenus, and so on.

1. Display the Menu Property Editor by choosing Menus from the Editors menu in the App Builder primary window.

Or, display the Revolving Property Editor and choose Menu as the Object Type. See “Menu Property Editor” on page 52 for a description of the editor.

2. Change Object Name, if necessary.

The automatically-generated Object names, which are unique within modules, do not usually need to be changed.

3. Click Enabled to enable the Tearoff function, if necessary.

This will make the menu “postable,” meaning that if you click on the Tearoff indicator (a dotted line) the menu will not be dismissed as soon as you select a menu item. The menu will remain posted until you dismiss it.

4. Add menu items to the Items list, if necessary.

Click Add Item to add an item after the selected item; choose from the Edit menu button to perform other edit functions.

5. Change Item Label Type for menu items in the Items list, if necessary.

Choices are String (text), Graphic, or Separator. Label becomes Graphic Filename if Graphic is chosen; Line Style becomes active if Separator is chosen.

6. Type a different Label or Graphic Filename for the selected item, if necessary.

Note - The easiest way to edit labels for menu items is to select the first one in the Items list, thus selecting it in the Label field. Type a new name and click Return. The new name will be displayed in the Items list and the next item in the list will be selected. Continue down the list with this select, type, Return process until all labels are completed.

If Graphic Item Label Type was chosen, the Graphic Filename must be an `xpm` or `xbm` graphic file.

7. Type an Item Mnemonic, if necessary.

Type one of the letters in the item label. That letter will be underlined in the menu item label. If the menu is posted, pressing that key will cause the action connected with the menu item to be performed.

Note - The same mnemonic letter, regardless of case, cannot be used more than once in a menu.

8. Type an Accelerator, if necessary.

An accelerator is comprised of a prefix (Ctrl, Alt, Meta, or Shift), <key>, and a letter (uppercase or lowercase). See “Menu Property Editor” on page 52 for more information.

9. Choose a Line Style, if Item Label Type is Separator.

See “Menu Property Editor” on page 52 for the list of choices.

10. Attach an Item Submenu, if appropriate.

See “To Attach an Existing Submenu to a Menu Item” on page 58 for instructions.

11. Change Item State, if necessary.

By default the item state is Active. If you want the menu item to be inactive when the application is started, click the Active check box to deselect it.

12. Select Background and Foreground Colors, if necessary.

Type in a color or choose Color Chooser from the menu and select a color from the Color Chooser. See “To Select Colors From the Color Chooser” on page 43 for details.

13. Click Connections to add programmatic connections to menu items, as necessary.

See “Connecting Menu Items to Actions” on page 77 for instructions.

14. Click Apply or OK to apply the changes.

If you click Apply the property editor will remain displayed.

▼ To Attach an Existing Menu to an Object

The following instructions assume you have created one or more menus as described in “To Create a Menu” on page 54 and that you are ready to attach a menu to an object in the interface. Menus can be attached to menu buttons, menubar items, lists,

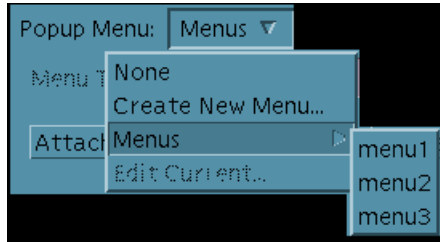
and any of the four types of panes. A menu is automatically attached to an option menu, so there is no need to attach a menu to it.

1. Display the Revolving Property Editor with the object to which you wish to attach a menu selected in the editor.

Double-click the object in the interface or the Module Browser or choose the appropriate Object Type in the Revolving Property Editor and select the desired object in the Objects list.

2. Select a menu to attach to the selected object.

Click mouse button 2 or press mouse button 1 or 3 on the Popup Menu or Pulldown Menu menu button. Choose the appropriate menu from the Menus submenu.



The name of the selected menu will be displayed in the text field of the Popup Menu or Pulldown Menu.

3. Click OK or Apply.

The menu will be attached to the selected object. See “Making Connections Between Objects” on page 75 for instructions for making the menu functional.

Note - If you attach a menu to one of the pane objects or to a list, the menu will be a pop-up menu, displayed in test mode or in the compiled application by pressing mouse button 3 with the cursor on the pane or the list.

▼ To Create and Attach a Menu

One method of creating and attaching a menu to an object is described in “To Create a Menu” on page 54 and “To Attach an Existing Menu to an Object” on page 56. With the method described here you create and attach the menu at one time. Use whichever method is most convenient.

1. Display the Revolving Property Editor with the object to which you wish to attach a menu selected in the editor.

Double-click the object in the interface or the Module Browser or choose the appropriate Object Type in the Revolving Property Editor and select the desired object in the Objects list.

2. Choose Create New Menu from the Pulldown Menu or Popup Menu button available for some objects.

Pull-down menus are available for menu buttons and menu bars. Popup menus are available for all pane objects and for lists. An Item SubMenu is available for menus themselves.

The Menu Property Editor will be displayed, with a newly-created menu selected in the Menu Objects list. The menu will have default values for Object Name, Tearoff, Items, Item Label Type, Label, and Item State.

The Object Name will be of the form “object_type_menu,” “object_type_menu2,” and so on, depending on what type of object was selected in the property editor when Create New Menu was chosen and how many menus have been created for the current module. The menu will be added to the end of the Menu Objects list, with the name of the current module preceding the menu name.

3. Edit the menu and click OK to apply the changes and dismiss the Menu Property Editor.

See “To Edit a Menu” on page 55 for instructions. You can edit the menu later if you like.

4. Click Apply or OK in the Revolving Property Editor to attach the menu to the selected object.

See “Making Connections Between Objects” on page 75 for instructions for making the menu functional.

▼ To Attach an Existing Submenu to a Menu Item

The following instructions assume you have created two or more menus as described in “To Create a Menu” on page 54 and that you are ready to attach one of them as a submenu for a menu item.

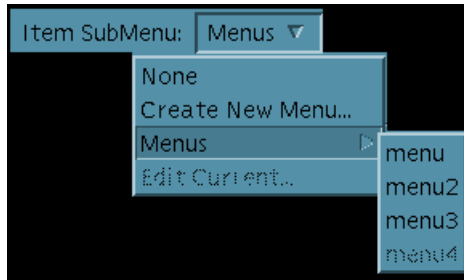
1. Display the Menu Property Editor or the Revolving Property Editor with Menu chosen as the Object Type.

2. In the Menu Objects or Objects list select the menu that contains the menu item to which you want to attach a submenu.

3. In the Items list select the menu item to which you want to attach a submenu.

4. Select a menu to attach to the selected menu item.

Click mouse button 2 or press mouse button 1 or 3 on the Item SubMenu menu button. Choose the appropriate menu from the Menu submenu.



The name of the selected menu will be displayed in the text field of the Item SubMenu.

5. Click OK or Apply.

The submenu will be attached to the selected menu item. See “Making Connections Between Objects” on page 75 for instructions for making the submenu functional.

▼ To Create and Attach a Submenu

The following instructions assume you have created one or more menus and that you want to create and attach a submenu to one of the items in one of the menus. With this method you create the submenu and attach it as part of a single procedure. Another method for accomplishing this task is to create the menu as described in “To Create a Menu” on page 54 and to attach it to a menu item as described in “To Attach an Existing Submenu to a Menu Item” on page 58 . Use whichever method is most convenient.

Note - When you create and attach a submenu you will be using two editors—one to create the menu and the other to attach the submenu to the menu item. If you start this procedure in the Menu Property Editor, you will be attaching the submenu in the Menu Property Editor but creating it in the Revolving Property Editor. If you start the procedure in the Revolving Property Editor, you will be attaching the menu there but creating it in the Menu Property Editor. The example below assumes you are starting the procedure in the Menu Property Editor.

- 1. Display the Menu Property Editor by choosing Menus from the Editors menu of the App Builder primary window.**
- 2. In the Objects list select the menu that contains the menu item to which you want to attach a submenu.**

3. **In the Items list select the menu item to which you want to attach a submenu.**
4. **Choose Create New Menu from the Item SubMenu menu.**
The Revolving Property Editor will be displayed, with the new menu selected in the Objects list.
5. **Edit the menu and click OK to apply the editing changes you made and to dismiss the Revolving Property Editor**
See “To Edit a Menu” on page 55 for instructions. You can edit the menu later if you like.
6. **Click Apply in the Menu Property Editor to attach the submenu to the menu item selected in Step 2. See “Connecting Menu Items to Actions” on page 77 for instructions for making the submenu functional.**

▼ To Create and Attach a Help Menu

A help menu at the right end of the menu bar in the application primary main window is a common feature of applications. Do the following to create a help menu and attach it to the Help item of a menu bar. These instructions assume you have included a menu bar in the primary main window and that Help is one of the menu bar items.

1. **Display the Revolving Property Editor with Menubar selected in the editor.**
Double-click the appropriate menu bar in the interface or the Module Browser or choose Menubar from the Object Type menu in the Revolving Property Editor and select the desired menu bar in the Objects list. This will normally be the menu bar in the primary main window.
2. **Select Help in the Items list.**
This is the Help item on the menu bar.
3. **Click mouse button 2 or press mouse button 1 or 3 on the Pulldown Menu menu button. Choose Create New Menu from the Menus submenu.**
The name of the new menu will be displayed in the text field of the Pulldown Menu and the Menu Property Editor will be displayed with the new menu loaded.
4. **Edit the menu.**
 - a. **If you want a Help menu that looks like the App Builder Help menu, for instance, add four items to the two default items in the Items list. Select each item in turn and type appropriate labels (Overview, Tasks, Reference, On Item, Using Help, and About [*application_name*], for instance).**

- b. Add item mnemonics and accelerators, if appropriate.**
See “Menu Property Editor” on page 52 for details.
 - c. Make other changes to the menu, if appropriate.**
-
- 5. Click OK or Apply in the Menu Property Editor.**
The menu is complete. The Menu Property Editor will be dismissed if you click OK.
 - 6. Click OK or Apply in the Revolving Property Editor.**
The Help menu has been attached to the Help item in the menu bar. The Revolving Property Editor will be dismissed if you click OK.

Creating and Editing Messages

This section describes the Message Editor and explains how to create and edit message dialog boxes.

Message Editor

The Message Editor is used to create various types of messages to be displayed at appropriate times in the compiled application. It is shown in Figure 5-1 and then described. See “To Create a Message Dialog Box” on page 63 and “To Edit a Message” on page 65 for instructions on its use.

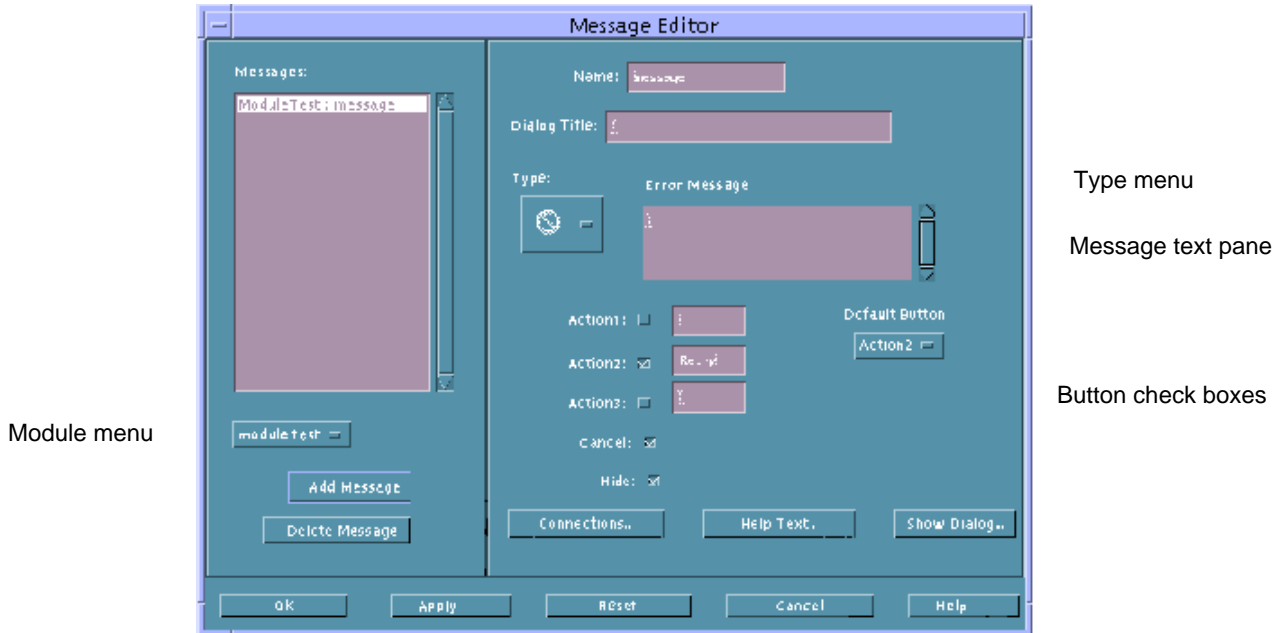


Figure 5-1 Message Editor

- Messages** Lists all messages for the current project. The module name precedes the message name in the list.
- Module menu** Specifies the module for which you wish to add a new message. The module name precedes the message name in the Messages list.
- Add Message** Adds a new message to the Messages list and to the current project. The message is for the module selected in the module option menu.
- Delete Message** Deletes the selected message.
- Name** Specifies the instance name of the current message object. Messages are given names such as “message,” “message2,” “message3,” by default.
- Dialog Title** Specifies the title that will appear at the top of the message dialog box.
- Type** Specifies the type of message to be created. The choices are Error, Information, Working,

Question, and Warning. The message type appears above the message text pane. The appropriate message icon appears in the message dialog box in the compiled applications.

Message text pane

A text pane for entering the text of the message. Press Return when you want the text to start a new line. The label above the text pane varies, depending on what type of message you have chosen.

Button check boxes

Specifies which buttons will be included at the bottom of the message dialog box. Each message type has a different set of buttons specified by default; these default choices can be changed. Actions associated with the Action1, Action2, Action3, and Cancel buttons are set in the Connections Editor. See “To Create a Message Dialog Box” on page 63 for detailed instructions.

Default Button menu

Specifies the default button for the selected message dialog.

Connections

Displays the Connections Editor for specifying what functions to call for each of the Action buttons and the Cancel button.

Help Text

Displays the Help Editor, in which you write help text to be displayed when the Help button is clicked in the message dialog box.

Show Dialog

A push button for displaying the selected message in a message dialog box that looks like the actual dialog box in the compiled application. Click one of the buttons other than Help to dismiss the dialog box.

See “Property Editor: Common Buttons” on page 137 for descriptions of the buttons at the bottom of the editor.

▼ To Create a Message Dialog Box

See “Message Editor” on page 61 for descriptions of each of the fields in the editor. See “To Connect a Non-Modal Message to a Function” on page 65 for a discussion of how to connect messages to the functions that cause them to be displayed, with examples.

1. **Choose Messages from the Editors menu of the App Builder primary window to display the Message Editor.**
2. **Choose the module to which you want to add a message in the option menu below the Messages list.**

3. **Click Add Message.**

A unique name (“message,” “message2,” and so on, depending on how many messages are in the current module) will be displayed in the Name field. The module name and the message name will be added to the Messages list.

4. **Modify the Name if you wish.**

This is the name used to identify the message internally—in the Connections Editor, for instance. This name is not displayed in the compiled message dialog box.

5. **Type a title for the message dialog in the Dialog Title field.**

This will appear in the title bar of the compiled message dialog box.

6. **Choose a message type from the Type menu.**

The icon for the message type will be displayed in the Type menu and the message type (Error, Information, Working, Question, or Warning) will be displayed above the message text pane (to the right of the Type menu).

7. **Type the message text in the message text pane, pressing Return when you want a new line to start in the compiled message.**

8. **Specify which buttons will appear in the message dialog box by clicking the check boxes below the message text pane and typing the labels you want on the Action1, Action2, and Action3 buttons.**

Each of the message types includes a default set of buttons that you can modify:

- Error: Action2 (Retry), Cancel, Help.
- Information: Action1 (OK), Help.
- Working: Action1 (Close), Action2 (Stop), Help.
- Question: Action1 (Yes), Action2 (No), Help.
- Warning: Action2 (Continue), Cancel, Help.

9. **Choose a default button from the Default Button menu.**

This is the button that will have an extra border when the message dialog box is displayed. This is the button that will be activated if Return is pressed. Each of the message types has a default Default Button that you can modify:

- Error: Action2
- Information: Action1

- Working: Action1
- Question: Action1
- Warning: Action2

10. Click the Help Text button and create help text, as appropriate.

See “To Create Help” on page 72 for instructions.

11. Click OK or Apply to apply the changes.

The Message Editor will be dismissed if you click OK.

▼ To Edit a Message

1. Choose Messages from the Editors menu of the App Builder primary window to display the Message Editor.

2. Select the message you want to edit in the Messages list.

3. Edit the message, as appropriate.

- To delete a message, click Delete Message.
- To modify the dialog box title, click in the Dialog Title text field and type the new label.
- To change the message type, choose a different Type icon.
- To modify the message text, click in the message text pane and type the appropriate changes.
- To change the available buttons, select the check boxes and type new button labels, if appropriate.
- To change the default button, choose another from the Default Button menu.
- To modify help text, click Help Text, make the changes in the Help Editor, and click OK in the Help Editor.

4. Click OK or Apply to apply the changes.

The Message Editor will be dismissed if you click OK.

▼ To Connect a Non-Modal Message to a Function

See “Example: Writing Code for Messages” on page 66 for a discussion of how to connect a message to the function that causes it to be displayed, with examples. In particular, read that section to see how to attach a modal (blocking) message to a function.

1. **Display the Connections Editor by clicking Connections in the Message Editor or by choosing Connections from the Editors menu of the App Builder primary window.**

If you select a message in the Message Editor and click Connections, the selected message will be selected in the Source list of the Connections Editor. You can skip the next two steps.

2. **Display messages in the Source list by choosing Message from the Source menu.**

3. **Select a message in the Source list.**

4. **Choose Call Function as the Action Type.**

This activates the When menu on the Source side of the Connections Editor.

5. **Choose a When item (Action1, Action2, Action3, or Cancel Activated, depending on which buttons were checked in the Message Editor).**

6. **Type the name of the Function to be called when the selected button is selected.**

When code is generated, this function is created in `<module_name>_stubs.c`. You will have to substitute appropriate code before running `make`.

7. **Click Connect to create the connection.**

The connection will be displayed in the View list at the bottom of the Connections Editor.

8. **Repeat the previous three steps for each button except Help.**

9. **Click Cancel to dismiss the Connections Editor.**

Example: Writing Code for Messages

Once you have created a message as described in “To Create a Message Dialog Box” on page 63, you must determine when and how it should be displayed. Usually messages are displayed after a certain piece of logic has been executed. For example, if a user types digits in a text field that is designed to accept a name, you will want to post an error message informing the user that digits are not valid.

Message boxes in Motif can be displayed in one of two ways: *modally* or *non-modally* (equivalently, *blocking* or *non-blocking*). The App Builder code generator (`dtcodegen`) supplies two routines, corresponding to the two modes of display. They are found in `dtb_utils.c` and are named:

- `dtb_show_modal_message()`

■ `dtb_show_message()`

If you want to display a particular message modally, use `dtb_show_modal_message()`. If you want to display a particular message non-modally, use `dtb_show_message()`.

One of the key differences in the way these two types of messages are handled is in how the application determines which button was pressed by the user in the message dialog box. For non-modal messages callbacks are added to each button via the Connections Editor. When the user clicks a button the corresponding callback is called. Since modal dialogs are *blocking*, the button callbacks are *not* called. Instead, the value is returned by `dtb_show_modal_message()`, which indicates which button is pressed by the user.

▼ To Write Code for Modal Messages

If a message is to be displayed modally, use `dtb_show_modal_message()`. This routine returns a value which indicates which message box button the user has pressed. The value is an enum that is defined in `dtb_utils.h`:

```
/*
 * Returns answer value for modal MessageBox
 */
typedef enum {
    DTB_ANSWER_NONE,
    DTB_ANSWER_ACTION1,
    DTB_ANSWER_ACTION2,
    DTB_ANSWER_ACTION3,
    DTB_ANSWER_CANCEL,
    DTB_ANSWER_HELP
} DTB_MODAL_ANSWER;
```

You can then examine the return value (for example via a switch statement) and execute the appropriate piece of code.

Here's an example of displaying a message modally. Say that you have created a simple application, named `foo`. The project is named `foo.bip` and consists of one module, `foo.bil`. The module `foo.bil` consists of a main window, control pane, and two text fields, one for the user to enter a person's first name and the other to enter the last name. If the user types digits, an error message will be posted, informing the user that digits are not allowed, and giving the user a couple of options. The user can start over, which means the text entered will be erased, or the user can continue, which means that the text entered will be left intact, giving the user discretion as to how to modify the text.

A call-function connection is made for both text fields, which will be called each time the user types something. The function for the first text field will check if the character typed is a digit. If so, it will post the error message modally:

```
void
verify_first_nameCB(
```

```

Widget widget,
XtPointer clientData,
XtPointer callData
)
{
/** DTB_USER_CODE_START vvv Add C variables and code below vvv */
char      *text = (char *)NULL;
int       textlen = 0;
DTB_MODAL_ANSWER  answer = DTB_ANSWER_NONE;
DtbFooMainwindowInfo instance = (DtbFooMainwindowInfo) clientData;
/** DTB_USER_CODE_END   ^^^ Add C variables and code above ^^^ */

/** DTB_USER_CODE_START vvv Add C code below vvv */
text = XmTextFieldGetString(widget);
if ((text != NULL) && (*text != NULL))
{
    textlen = strlen(text);
    if (isdigit(text[textlen-1]))
    {
        dtb_foo_message_initialize(&dtb_foo_message);
        answer dtb_show_modal_message(instance->textfield,
            &dtb_foo_message, NULL, NULL, NULL);
        switch (answer)
        {
            case DTB_ANSWER_ACTION1: /* Start Over */
                XmTextFieldSetString(widget, "");
                break;

            case DTB_ANSWER_ACTION2: /* Continue */
                break;

        }
    }
}

/** DTB_USER_CODE_END   ^^^ Add C code above ^^^ */
}

```

▼ To Write Code for Non-Modal Messages

If you want to post a non-modal message, use `dtb_show_message()`. Since this function is not modal and does not return a return value, callbacks for the message box buttons should be specified via the Connections Editor, as described in “To Connect a Non-Modal Message to a Function” on page 65. The buttons that are specified for the message box are displayed as When items for the message object in the Connections Editor.

Using the same example as above, make the last name text field display the error message non-modally if the user types a digit. As previously mentioned, first you’ll need to make a couple of call-function connections for the two buttons in the message box, labelled “Start Over” and “Continue.” When code is generated, add code to those routines to do the right thing. The start over routine will clear out the text field and the continue routine will do nothing, in this case.

void

```

verify_last_nameCB(
    Widget widget,
    XtPointer clientData,
    XtPointer callData
)
{
    /** DTB_USER_CODE_START vvv Add C variables and code below vvv ***/
    char          *text = (char *)NULL;
    int           textlen = 0;
    DtbFooMainwindowInfo instance = (DtbFooMainwindowInfo) clientData;

    /** DTB_USER_CODE_END   ^^^ Add C variables and code above ^^^ ***/

    /** DTB_USER_CODE_START vvv Add C code below vvv ***/

    text = XmTextFieldGetString(widget);
    if ((text != NULL) && (*text != NULL))
    {
        textlen = strlen(text);
        if (isdigit(text[textlen-1]))
        {
            dtb_foo_message_initialize(&dtb_foo_message);
            dtb_show_message(instance->textfield,
                &dtb_foo_message, NULL, NULL);
        }
    }
    /** DTB_USER_CODE_END   ^^^ Add C code above ^^^ ***/
}

void start_overCB(
    Widget widget,
    XtPointer clientData,
    XtPointer callData
)
{
    /** DTB_USER_CODE_START vvv Add C variables and code below vvv ***/

    DtbFooMainwindowInfo instance = (DtbFooMainwindowInfo) clientData;

    /** DTB_USER_CODE_END   ^^^ Add C variables and code above ^^^ ***/

    /** DTB_USER_CODE_START vvv Add C code below vvv ***/

    XmTextFieldSetString(dtb_foo_mainwindow.textfield2, "");

    /** DTB_USER_CODE_END   ^^^ Add C code above ^^^ ***/
}

void continueCB(
    Widget widget,
    XtPointer clientData,
    XtPointer callData
)
{
    /** DTB_USER_CODE_START vvv Add C variables and code below vvv ***/
    /** DTB_USER_CODE_END   ^^^ Add C variables and code above ^^^ ***/

    /** DTB_USER_CODE_START vvv Add C code below vvv ***/
    /** DTB_USER_CODE_END   ^^^ Add C code above ^^^ ***/
}

```

```
}
```

The two routines above, `start_overCB()` and `continueCB()`, are added as callbacks for the two buttons via the call to `dtb_show_message()`. Here is the code fragment that adds the callback (from `dtb_utils.c`):

```
/* Add Callbacks if necessary */

if (mbr->action1_callback != (XtCallbackProc) NULL)
    XtAddCallback(msg_dlg, XmNokCallback, mbr->action1_callback, NULL);

if (mbr->cancel_callback != (XtCallbackProc) NULL)
    XtAddCallback(msg_dlg, XmNcancelCallback, mbr->cancel_callback, NULL);

if (mbr->action2_callback != (XtCallbackProc) NULL)
{
    action_btn = dtb_MessageBoxGetActionButton(msg_dlg, DTB_ACTION2_BUTTON);
    if (action_btn != NULL)
        XtAddCallback(action_btn, XmNactivateCallback,
            mbr->action2_callback, NULL);
}

if (mbr->action3_callback != (XtCallbackProc) NULL)
{
    action_btn = dtb_MessageBoxGetActionButton(msg_dlg, DTB_ACTION3_BUTTON);
    if (action_btn != NULL)
        XtAddCallback(action_btn, XmNactivateCallback, mbr->action3_callback, NULL);
}
```

The structure `mbr` contains all the necessary information for the message. The structure is filled in with the values specified in the Message Editor when the message object was created via the `dtb_&&_initialize()` routine—in this example, `dtb_foo_message_initialize()`.

Adding Functionality to the Interface

Once you have laid out an interface you may want to add help to interface elements, make programmatic connections between objects, specify drag and drop behavior, and specify application framework behavior (including internationalization, resource file creation, session management, and ToolTalk message handling).

- “Creating Help and Help Connections” on page 71
- “Making Connections Between Objects” on page 75
- “Connecting Menu Items to Actions” on page 77
- “Editing Existing Connections” on page 80
- “Establishing Drag and Drop Behavior” on page 81
- “Establishing Application Framework Behavior” on page 84

Creating Help and Help Connections

Two kinds of help—object help and a help volume—can be accessed from an App Builder application. Object help is created in App Builder, as explained in “To Create Help” on page 72. A help volume is created separately from App Builder, and is accessed in your compiled application from the Help menu or by clicking More in a help dialog box. See the *Help System Author’s and Programmer’s Guide*, which is included in the desktop Help Developer’s Kit, for instructions for creating a help volume.

About App Builder Help

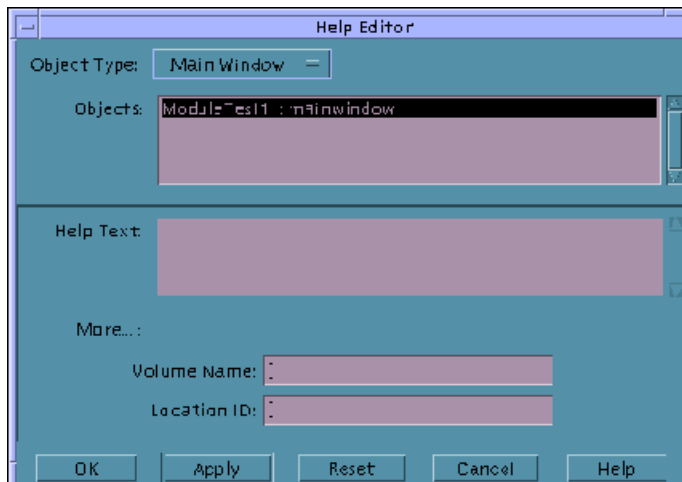
With App Builder you can create help for any object in the interface—a control, a pane, or a window. Help is created in the Help Editor, as described in “To Create Help” on page 72. In test mode or in the compiled application, help is displayed in the following ways:

- Press F1 with the cursor over an interface window.
If help exists for the object with input focus, it is displayed. If there is no help for the object with input focus but help exists for a parent window, help for that window will be displayed.
- Click the Help button in a window or dialog box.
- Choose On Item from the Help menu and click on an object in the interface.

See “To Test On Item Help” on page 104 for instructions for testing On Item help. If help is not available for a particular child object (a control or a pane) but is available for the parent of the child object (a pane or a window), help for the parent object is displayed.

▼ To Create Help

1. **Display the Revolving Property Editor.**
2. **Choose the Object Type for which you want to write help.**
3. **Select the object for which you want to write help.**
4. **Click Help Text to display the Help Editor with the appropriate object selected.**



5. **Type help text in the Help Text pane.**

Press Return when you want a new line to start in the compiled help dialog box.

6. Type a Volume Name if appropriate.

This is the name of a help volume.

7. Type a Location ID, if appropriate.

This is the helptag location ID that will provide more information about the selected object.

Note - You must create help for an object if you want access to a help volume from a help dialog box. If you create help for an object and include a Volume Name and Location ID, the More button will be active in the help dialog box.

8. Click OK or Apply to apply the changes.

If you want to add help to other objects, choose the appropriate Object Type in the menu, select the appropriate object, and repeat the previous two steps.

The Help Editor will be dismissed if you click OK.

▼ To Connect a Help Menu to On Item Help

One of the standard items in a Help menu is On Item Help, which is used to display help for a specific object in an interface. The instructions below assume you have included a menu bar in a main window and that you have attached a Help menu to the Help item in the menu bar. See “To Create and Attach a Help Menu” on page 60 for instructions.

1. Choose Menus from the Editors menu in the App Builder primary window.

The Menu Property Editor is displayed.

2. Select the Help menu in the Objects list.

3. Select one of the items in the Items list as the On Item Help item.

4. Type On Item or other appropriate text in the Label text field.

5. Include an item mnemonic, if appropriate.

An item mnemonic specifies one of the letters in the selected item as a keyboard shortcut for activating the menu item when the menu is posted. The letter specified will be underlined in the menu item. Case is significant for mnemonics.

6. Include an item accelerator, if appropriate.

An item accelerator specifies a keyboard shortcut for choosing the selected item. An accelerator is comprised of a prefix (Ctrl, Alt, Meta, or Shift), <key>, and a letter (upper- or lowercase). To make Control-x an accelerator, for instance, type Ctrl<Key>x.

7. Click Apply.

The changes to the Help menu will be applied.

8. Click Connections to display the Connections Editor.

The Connections button is at the bottom of the Menu Property Editor.

9. Choose Menu Item in the Source menu.

10. Select the On Item Help item in the Source list.

11. Choose Activate On Item Help from the Action Type menu.

12. Click Connect.

When you choose the On Item Help item in the Help menu in test mode or in the compiled application, the cursor will become an arrow with a question mark. Move the cursor over an object and click mouse button 1 to display On Item help for the selected object (or for one of its parent objects if no help is available for the object itself). See “To Test On Item Help” on page 104 for more information.

▼ To Connect a Help Menu to a Help Volume

After creating a help menu and attaching it to the Help item in a menu bar as explained in “To Create and Attach a Help Menu” on page 60, do the following to connect menu items to specific locations in a help volume. See “To Connect a Help Menu to On Item Help” on page 73 for instructions for connecting the On Item help item in the Help menu to the On Item help function.

1. Display the Connections Editor.

Click Connections in the Revolving Property Editor or in the Menu Property Editor or choose Connections from the Editors menu.

2. Choose Menu Item from the Source option menu.

3. Select one of the Help menu items from the Source scrolling list.

4. Choose Access Help Volume from the Action Type option menu.

5. Type the name of the help volume in the Volume text field.

6. Type the appropriate location ID in the Location text field.

7. Click Connect to make the connection.

Making Connections Between Objects

In its simplest form a connection is a programmatic relationship between a source object and a target object: when I click on Button A I want Dialog Box B to be displayed. This type of connection is described below in “To Make a Connection between Two Objects” on page 75.

Different types of connections from menu items are described in “To Connect a Menu Item to a Predefined Action” on page 77, “To Connect a Menu Item to a Call Function” on page 78, and “To Connect a Menu Item to an Execute Code Action” on page 79.

Other types of connections (to On Item Help and to a help volume) were discussed in “To Connect a Help Menu to On Item Help” on page 73 and in “To Connect a Help Menu to a Help Volume” on page 74. In “To Connect a Non-Modal Message to a Function” on page 65, a message dialog box is connected to the function which causes the dialog box to be displayed.

▼ To Make a Connection between Two Objects

1. Select the source and target objects.

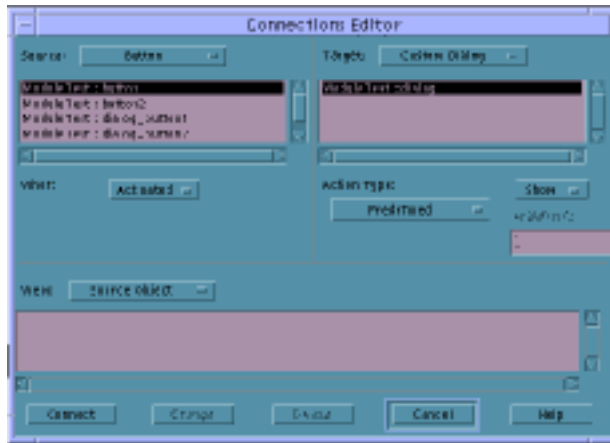
By “drag-linking”: While holding down the Control key, position the mouse cursor over the intended source object, press mouse button 1, drag the cursor to the intended target object, and release the mouse button.

This can be done in the interface or in the Module Browser (or between the interface and the Module Browser). See “Module Browser” on page 126 for a description of the Browser.

A line with a “plug” at its end will extend from the source as you move the mouse. The target object will be highlighted with a dark box. When you release the mouse button on the target object, the Connections Editor will be displayed, with the source and target objects selected.

- Through the Connections Editor: Display the Connections Editor by choosing Connections in the Editors menu. Choose the object type you want as the source object in the Source menu, and select the object you want as the source in the Source list. Then choose the object type you want as the target object in the Target menu, and select the object you want as the target in the Target list.

Note - If you select an object in the Revolving Property Editor and click the Connections button, the Connections Editor will be displayed with the selected object selected in the Source list.



2. Choose an action in the When menu.

This is the action on the source object that will cause an action to be performed on the target object. Choices vary, depending on the source object type.

3. Choose an action to be performed on the target in the Action Type menu.

Different target action types require different subsequent action by you:

- **Predefined:** Choose an action from a second option menu.
- **Call Function:** Type the name of a function in the Function text field. You will also have to write code for the call function, as described in “Adding User Code to Generated Code” on page 113.
- **Execute Code:** Type the code to be performed in the Execute Code Editor and click OK in the editor.

4. Click Connect to make the connection.

The connection will be displayed in the View list at the bottom of the Connections Editor.

5. Click Cancel to dismiss the Connections Editor.

Connecting Menu Items to Actions

Once you have created a menu and attached it to an object as described in “To Create a Menu” on page 54 and “To Attach an Existing Menu to an Object” on page 56, you need to connect a meaningful action to each item in each menu. Choices for target actions are Predefined, Call Function, Execute Code, Activate On-Item Help, and Access Help Volume.

Connecting menu items to the first three types of actions are described below. See “To Connect a Help Menu to On Item Help” on page 73 and “To Connect a Help Menu to a Help Volume” on page 74 for instructions for making help connections.

▼ To Connect a Menu Item to a Predefined Action

Only Predefined target actions are described in this section. See “To Connect a Menu Item to a Call Function” on page 78 and “To Connect a Menu Item to an Execute Code Action” on page 79 for information about those connections.

- 1. Display the Connections Editor.**

Click Connections at the bottom of the Revolving Property Editor or choose Connections from the Editors menu of the App Builder primary window.

- 2. Choose Menu Item from the Source menu.**

All of the menu items in the current project will be listed.

- 3. Select a menu item from the list below the Source menu.**

This is the item from which the connection will be made.

- 4. Choose Predefined as the target action type from the Action Type menu.**

The Target menu will be activated.

- 5. Choose the appropriate type of object from the Target menu.**

This is the type of object that will be acted on when the When action is performed on the source menu item.

- 6. Select an object in the list of Target items.**

This is the specific object that will be acted on when the When action is performed on the source menu item.

- 7. Choose a When action for the Source menu item.**

Choices are Activated, Created, and Destroyed.

- 8. Choose a target action from the option menu to the right of Action Type.**

The choices vary depending on the target type.

9. Click Connect to make the connection.

The connection will be displayed in the View list at the bottom of the Connections Editor.

10. Click Cancel to dismiss the Connections Editor.

The designated target action will be performed in the compiled application when the When action is performed on the menu item.

Depending on the source When and target action, you may be able to test the connection in Test mode. See “To Test Menus in a Module” on page 105 for instructions.

▼ To Connect a Menu Item to a Call Function

Only the Call Function target action is described in this section. See “To Connect a Menu Item to a Predefined Action” on page 77 and “To Connect a Menu Item to an Execute Code Action” on page 79 for information about those connections.

1. Display the Connections Editor.

Click Connections at the bottom of the Revolving Property Editor or choose Connections from the Editors menu of the App Builder primary window.

2. Choose Menu Item from the Source menu.

All of the menu items in the current project will be listed.

3. Select a menu item from the list below the Source menu.

This is the item from which the connection will be made.

4. Choose Call Function as the target action type from the Action Type menu.

The Function text field will be activated.

5. Type the name of the function to be called in the Call Function text field.

This is the function that will be called when the When action is performed on the source menu item. See “Adding User Code to Generated Code” on page 113 for information about incorporating user code into the generated code.

6. Choose a When action for the Source menu item.

Choices are Activated, Created, and Destroyed.

7. Click Connect to make the connection.

The connection will be displayed in the View list at the bottom of the Connections Editor.

8. **Click Cancel to dismiss the Connections Editor.**

▼ To Connect a Menu Item to an Execute Code Action

Only the Execute Code target action is described in this section. See “To Connect a Menu Item to a Predefined Action” on page 77 and “To Connect a Menu Item to a Call Function” on page 78 for information about those connections.

1. **Display the Connections Editor.**

Click Connections at the bottom of the Revolving Property Editor or choose Connections from the Editors menu of the App Builder primary window.

2. **Choose Menu Item from the Source menu.**

All of the menu items in the current project will be listed.

3. **Select a menu item from the list below the Source menu.**

This is the item from which the connection will be made.

4. **Choose a When action for the Source menu item.**

Choices are Activated, Created, and Destroyed.

5. **Choose Execute Code as the target action type from the Action Type menu.**

The Execute Code Editor will be displayed.

6. **Type the code to be executed in the Execute Code Editor.**

The Execute Code Editor will be displayed. Type the code in the editor. See “Adding User Code to Generated Code” on page 113 for information about incorporating user code into the generated code.

7. **Click OK in the Execute Code Editor to apply the changes and dismiss the editor.**

8. **Click Connect in the Connections Editor to make the connection.**

The connection will be displayed in the View list at the bottom of the Connections Editor.

9. **Click Cancel to dismiss the Connections Editor.**

The code will be executed in the compiled application when the When action is performed on the menu item.

Editing Existing Connections

Once you have created a connection you can modify the connection, delete it, or create a new connection by selecting an existing connection, modifying it, and saving it as a new connection.

▼ To Edit an Existing Connection

1. Choose Connections from the Editors menu in the App Builder primary window.

The Connections Editor will be displayed.

2. Choose the source object type whose connection you want to view from the View menu at the bottom of the Connections Editor.

If you want to edit a connection with a button as a source object, for instance, choose Button from the View menu. All connections in the current project with button as source object will be displayed in the View list.

If you want to view all connections for a particular source object, choose Source Object in the View menu and select the object in the Source menu. All connections for the selected object will be displayed.

3. Select the connection you want to edit in the View list.

The source and target objects will be selected in the Source and Target lists at the top of the editor. Their When and Action Type choices will be displayed.

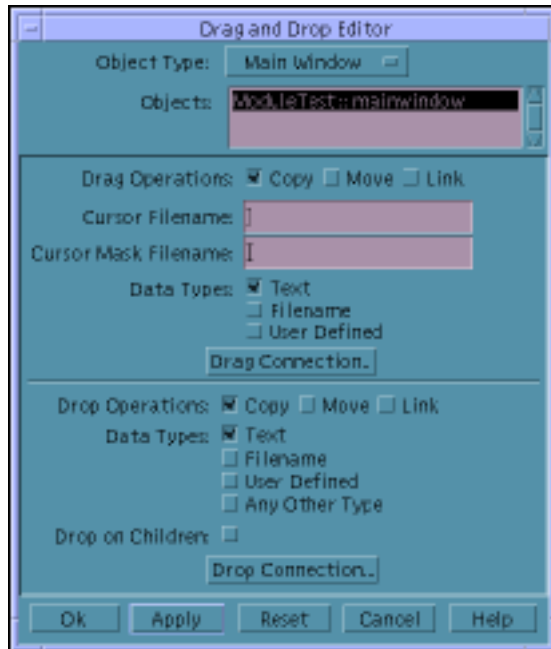
4. Edit the connection.

- To *delete* the selected connection, click Delete.
- To *modify* the selected connection, make changes to any of the choices (source object, When action, target object, Action Type) and click Change.
- To *add* a connection similar to the selected connection, modify any of the choices and click Connect. A new connection will be created.

5. Click Cancel to dismiss the Connections Editor.

Establishing Drag and Drop Behavior

Use the Drag and Drop Editor to establish drag and drop behavior for interface objects. See “To Establish Drag and Drop Behavior” on page 82 for instructions.



- Object Type** An option menu for choosing the type of object (Control Pane, Custom Dialog, Draw Area Pane, Label, or Main Window) for which you wish to establish drag and drop behavior.
- Objects** A scrolling list for selecting a specific object for which you wish to establish drag and drop behavior.
- Drag Operations** Check boxes for specifying which types of operations (Copy, Move, Link) will be legal for the selected object.
- Cursor Filename** A text field for typing the name of the graphics file that contains the graphical representation of the cursor that will be displayed as a drag from the selected object is being performed.

Cursor Mask Filename	A text field for typing the name of the graphics file that contains the bitmap which determines the shape of the visible representation of the cursor beneath the cursor mask. The cursor mask acts like a stencil, allowing only the pixels in the cursor that correspond to pixels in the mask to be visible.
Data Types	Check boxes for specifying Text, Filename, and User Defined as legal data types for drag operations.
Drag Connection	A push button to display the Connections Editor for creating the Call Function connection that makes the dragged-from operation functional.
Drop Operations	Check boxes for specifying which types of operations (Copy, Move, Link) will be legal for the selected object.
Data Types	Check boxes for specifying Text, Filename, User Defined, and Any Other Type as legal data types for drop operations.
Drop on Children	A check box for specifying whether a child of the selected object will be a legal drop site; this is relevant only if the child object is specified as a legal drop site.
Drop Connection	A push button to display the Connections Editor for creating the Call Function connection that makes the dropped-on operation functional.

▼ To Establish Drag and Drop Behavior

- 1. Choose Drag and Drop from the Editors menu of the App Builder primary window.**
The Drag and Drop Editor is displayed.
- 2. Choose an Object Type.**
- 3. Select an object in the Objects list.**
- 4. Select the Drag Operations you want to be legal for the selected object.**

5. **To display a special cursor when a drag operation is being performed from the selected object, type the names of graphics files in the Cursor Filename and Cursor Mask Filename fields.**
6. **Select the Data Types that will be legal for drag operations.**
7. **Click Drag Connection.**
The Connections Editor is displayed.
8. **Choose Dragged From as the When action in the Connections Editor.**
9. **Choose Call Function as the Action Type in the Connections Editor.**
10. **Type a name for the called function in the Function text field in the Connections Editor.**
This is the name of the function that will be called when a drag operation is performed. You will have to edit the `stubs.c` file to make the called function do something useful. See “Adding User Code to Generated Code” on page 113 for information.
11. **Click Connect in the Connections Editor.**
12. **Click Cancel to dismiss the Connections Editor.**
13. **Select which Drop Operations will be legal.**
14. **Select the Data Types that will be legal for drop operations.**
15. **Check Drop on Children if you want a drop operation on a child of the selected object to be legal.**
This is relevant only if the selected object has a child which is designated as a legal drop site.
16. **Click Drop Connection to display the Connections Editor.**
17. **Choose Dropped On as the When action in the Connections Editor.**
18. **Choose Call Function as the Action Type in the Connections Editor.**
19. **Type a name for the called function in the Function text field in the Connections Editor.**
This is the name of the function that will be called when a drop operation is performed. You will have to edit the `stubs.c` file to make the called function do

something useful. See “Adding User Code to Generated Code” on page 113 for information.

20. Click Connect in the Connections Editor.

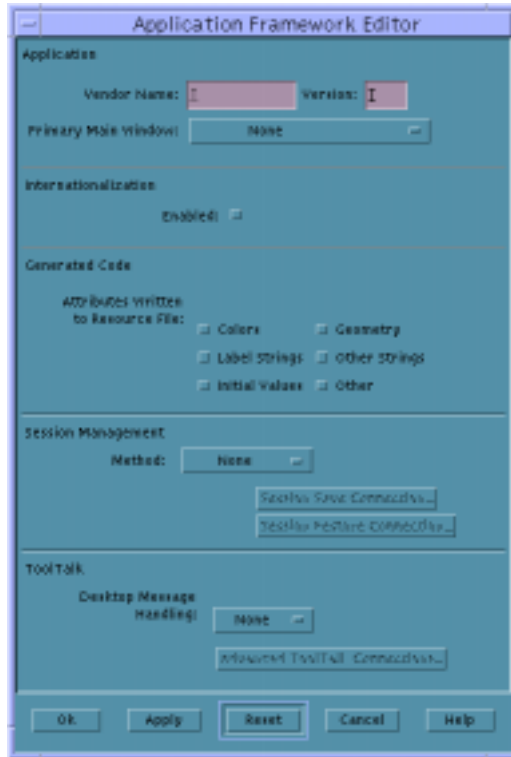
21. Click Cancel to dismiss the Connections Editor.

22. Click OK or Apply in the Drag and Drop Editor to apply the changes.

The Drag and Drop Editor will be dismissed if you click OK.

Establishing Application Framework Behavior

Use the Application Framework Editor to specify basic functionality in the application for internationalization, resource file attributes, session management, and ToolTalk message handling. See “To Establish Application Framework Behavior” on page 88 for instructions.



Application Vendor Name

A text field for typing an optional string, which will be stored in the source code. Used in the call to initialize ToolTalk (if ToolTalk™ is enabled).

Application Version

A text field for typing an optional string, which will be stored in the source code. Used in the call to initialize ToolTalk.

Application Primary

An option menu for specifying the primary main window of the application being developed. An application may have more than one main window, but only one primary window. This window is typically the window which is first displayed when the application is opened. By default the first main window dropped on the workspace in a new project is the primary window.

Internationalization Enabled

A check box for specifying whether internationalization is enabled; if checked, turns on XPG4-compliant internationalization in the

generated code for the project. In the `[module]_ui.c` file, all labels and strings for objects are generated, enclosed by the `catgets(3C)` call, which is used to fetch the appropriate localized version of the string at runtime. If internationalization is turned on, `dtcodegen` will also automatically generate and maintain the message catalog (`[project].msg`) which maps to the generated `catgets(3C)` calls.

Generated Code

Check boxes for specifying which categories of object attributes (which map to Xt Resources) should be written into a Resource file instead of placing them directly in the `[module]_ui.c` file—which is the default. Any attribute (resource) which is specified in a Resource file—and not directly in the code—can be modified without recompiling the application. The Attribute categories are as follows:

Colors: Background, Foreground

Label Strings: Label String, Title

Initial Values: Initial Value

Geometry: X, Y, Width, Height, all attachment attributes

Other Strings

Other

Session Management Method

An option menu for specifying the method of session management (None, Command Line, Session File, or Both), and two push buttons (Session Save Connection, Session Restore Connection) for displaying the Connections Editor and making appropriate connections.

ToolTalk Desktop

An option menu for specifying what level of the ToolTalk Desktop Message Alliance protocol the application will participate in, and a push button (Advanced ToolTalk Connections) for displaying the Connections Editor. The ToolTalk desktop protocol is a set of predefined ToolTalk messages which communicate desktop-type events or

requests to a running application. App Builder support for ToolTalk is provided at three levels: None, Basic, or Advanced, as described below.

None. There is no participation in the ToolTalk Desktop Protocol; no ToolTalk code is generated.

Basic. The ToolTalk library responds to Desktop messages in categories 1-3 in a predefined and standard way. Code is generated in `main()` which initializes ToolTalk and calls the function which tells ToolTalk to handle these messages. At this level, you do not need to write any special application code.

Advanced. The ToolTalk library responds to messages in categories 1 and 2, but the application is notified (via callback) when messages in categories 3 & 4 are received.

If you choose Advanced, you must use the Connections Editor to identify which messages the application wishes to handle. If you click the Advanced ToolTalk Connections button, the Connections Editor will be displayed with Application as the Source object type. The When option menu lists four ToolTalk choices: ToolTalk Do Command, ToolTalk Get Status, ToolTalk Pause/Resume, and ToolTalk Quit. The only valid action type for a ToolTalk connection is Call Function; your callback function will be called when the ToolTalk message is received.

At this level code is generated in `[project].c:main()` which initializes ToolTalk and sets up the Desktop Protocol so that the callbacks defined in the Connections Editor will be called when the corresponding message is received. Each user-defined callback contains descriptive comments describing what the application is expected to do in response to the message. These callbacks are also generated in `[project].c`.

▼ To Establish Application Framework Behavior

- 1. Choose Application Framework from the Editors menu in the App Builder primary window to display the editor.**
- 2. Type a Vendor Name and Version number in the text fields in the Application section, if appropriate.**

These are used in the call to initialize ToolTalk, if ToolTalk is enabled.
- 3. Choose a different primary main window, if appropriate.**
- 4. Set Internationalization to Enabled, if appropriate.**

Internationalization generates labels and strings for objects with a call that fetches the appropriate localized version of the string at run time. It also generates and maintains a similar message catalog.
- 5. Select the attributes you want to be written to the Resource file in the Generated Code section.**

The categories you select are written to a resource file instead of directly to the module file; these attributes, therefore, can be modified without recompiling the application.
- 6. Choose a Method (None, Command Line, Session File, or Both) in the Session Management section, as appropriate.**
- 7. Select Session Save Connection and/or Session Restore Connection, as appropriate, to make connections in the Connections Editor.**
- 8. Choose a Desktop Message Handling level (None, Basic, or Advanced) in the ToolTalk section, as appropriate.**

See “Establishing Application Framework Behavior” on page 84 for more about ToolTalk message handling.
- 9. If you did not choose Advanced in the previous step, click OK to apply the changes made and dismiss the Application Framework Editor.**
- 10. Click Advanced ToolTalk Connections if you chose Advanced in the previous step.**
- 11. Choose the appropriate ToolTalk function from the When menu in the Connections Editor.**
- 12. Choose Call Function as the Action Type.**

13. Type in the name of the appropriate call function.

This is the name of the function that will be called when a ToolTalk operation is performed. You will have to edit the `stubs.c` file to make the called function do something useful. See “Adding User Code to Generated Code” on page 113 for information.

14. Click Connect to make the connection.

15. Click Cancel to dismiss the Connections Editor.

16. Click OK in the Application Framework Editor to apply the changes and dismiss the editor.

Grouping and Attaching Objects

In order to ensure that interface objects maintain consistent spacing and size relationships, regardless of text changes (including internationalization changes) and resizing of windows, you may need to group control objects and to attach objects to each other.

This chapter discusses how to group and attach objects for dynamic layout behavior.

- “Grouping Objects” on page 91
- “To Create a Group” on page 92
- “To Edit Group Properties” on page 92
- “To Ungroup Objects in an Interface” on page 93
- “To Create a Border Around an Object” on page 94
- “Attaching Objects” on page 94
- “Attachments Editor” on page 95
- “To Attach Objects in an Interface” on page 100
- “Attachment Example: Custom Dialog” on page 101

Grouping Objects

A *group* is a collection of objects that can be treated as a unit. Once the objects in a group are positioned as desired, the group can be moved, maintaining the relative positioning of the individual objects. Because groups use dynamic layout for positioning objects, spacing and alignment in the group are maintained if any of the objects in the group change size.

See “Group Property Editor” on page 143 for a description of the editor and each of its elements.

▼ To Create a Group

1. Select the control objects you want to be part of the group.

You can select the objects either in the interface or the Module Browser, and you can select the objects in whatever manner is most convenient. See “To Select Control Objects in the Interface or the Browser” on page 36 for instructions.

2. Choose Group from the Layout menu or the pop-up menu (displayed by pressing mouse button 3 with the cursor in the window interface or in the Module Browser).

A rectangular box will be drawn around the group in the interface, indicating that the group is selected. Note that Ungroup is active in the Layout and pop-up menus; this is only true when a group is selected.

A new object will be displayed and selected in the Module Browser—an object called “group” (or “group2,” and so on, if other groups exist in the module). The group object is the parent of the objects that comprise the group. Group members cannot be moved independently. Any attempt to move an object in a group will cause the entire group to move.

▼ To Edit Group Properties

Group properties, including horizontal or vertical alignment and spacing between objects, are set in the Group Property Editor.

1. Double-click the group in the interface or in the Module Browser.

The group will be selected in the Revolving Property Editor. In the interface you will have to click in the space *between* group members to select the group.

Alternatively, you can display the Group Property Editor by choosing Groups from the Editors menu of the primary window. Choosing Groups from the Editors menu is the same as clicking Tear-off in the Revolving Property Editor with Group chosen as Object Type.

2. Select the group to be edited from the Group Objects list, if necessary.

3. Type a new name for the group, if necessary.

4. Choose a border frame style if you want the group to have a border in the completed interface (no border is the default).

Border frame style choices are shadow out, shadow in, etched out, etched in, and none.

5. Select a Layout Type.

Choices are as-is, vertical, horizontal, and row-column.

Depending on what you select, either the Vert Alignment or Horiz Alignment option menu, or both, will be active. If you select rows-columns, the Rows and Columns radio buttons will be active, also.

6. Designate the number of Rows or Columns (if row-column layout was selected).

The number of columns will be determined automatically if you designate the number of rows, and the number of rows will be determined automatically if you designate the number of columns.

7. Choose a vertical alignment (if either vertical alignment or row-column layout type was chosen).

The choices are align on left edge of objects (the default), align on colons/labels, align on middle of objects, or align on right edge of objects.

8. Designate vertical spacing (if either vertical alignment or row-column layout type was chosen).

The absolute values are in pixels; 10 is the default.

9. Choose a horizontal alignment (if either horizontal alignment or row-column layout type was chosen).

The choices are align on top edge of objects (the default), align on middle of objects, or align on bottom edge of objects.

10. Designate horizontal spacing (if either horizontal alignment or row-column layout type was chosen).

The absolute values are in pixels; 10 is the default.

11. Deselect Visible if you do not want the objects in the group to be visible when the application is opened.

12. Deselect Active if you do not want the objects in the group to be active when the application is opened.

13. Click OK or Apply to apply the changes.

The Revolving Property Editor or Group Property Editor will be dismissed if you click OK.

▼ To Ungroup Objects in an Interface

1. Select the group in the Module Browser or in the interface.

In the interface, click between objects in a group to select the group. You will know the group is selected if a box appears around two or more objects.

If you can't select a group in the interface or if you want to be sure to select the right group in an interface with many groups, open the Module Browser. Groups are shown in the Module Browser by name of group; if you select the group in the Module Browser, it is also selected in the interface.

2. Choose Ungroup from the Layout menu or the interface pop-up menu (displayed by pressing mouse button 3 in an interface window).

The objects are no longer part of the group. You can now select any of the objects and move it independently of the other objects.

▼ To Create a Border Around an Object

The group function can be used to create a border around an individual object, such as a label.

1. Select the object in the interface.

2. Choose Group from the Layout menu or the interface pop-up menu.

The object will be part of a group.

3. Display the Group Property Editor.

4. Select the group you want to put a border around.

If you double-click the group in the Module Browser, the Group Property Editor will be displayed, with the group selected.

5. Choose the Border Frame style you want to add to the object.

6. Click OK to apply the change and dismiss the Group Property Editor.

Attaching Objects

Attachments (and groups, which are based on attachments) establish dynamic layout behavior for objects in the interface. Dynamic layout behavior ensures that objects will maintain consistent relationships during resize activities. Attachments enable an internationalized application to work well in a number of locales.

All child objects are attached by their top and left edges to the top and left edge of their parent object, by default. Thus a control pane dropped on a main window is attached by its left and top edges to the left and top edges of the main window. Similarly, a button dropped on the control pane is attached to the control pane.

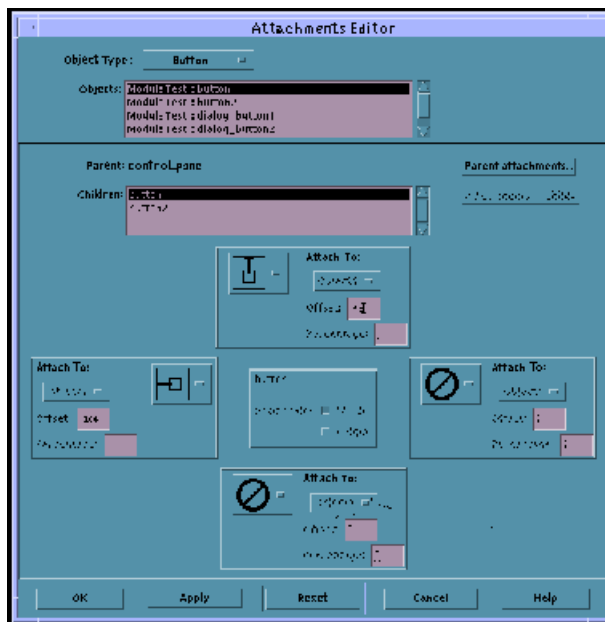
If the parent object is resized in an upward or leftward direction, the child object moves with the parent, maintaining the distance from the top and left edge of the parent.

If a pane object is dropped on the top or left edge of its parent it will be attached to that edge with an offset of 0. If it is dropped some distance to the right and below the left and top edges of its parent, it will have positive offsets.

If a pane object is resized from its right and bottom edges so that it spans its parent object, it will be attached to the right and bottom edges of its parent.

Attachments Editor

Used to attach objects to each other for layout purposes, the Attachments Editor is described below.



Object Type

An option menu for choosing the type of object for which you want to make attachments. Some object types (custom dialog, file selection dialog, main window) do not have parents and are not included in the menu.

Objects	A scrolling list for selecting the object for which you want to make attachments.
Parent	A text field that indicates the parent of the selected object.
Children	A scrolling list that lists the children of the Parent object.
Parent attachments/Attachments	<p>Radio buttons for displaying the attachments of the parent of the selected object or the attachments of the children of the selected object.</p> <p>Some objects (draw area pane, term pane, text pane) cannot have children and may be children of a main window or custom dialog; thus, neither Parent attachments nor Attachments in child will be active. If the pane is a child of another pane, though, or if it is part of a layered pane, Parent attachments will be active.</p>
Attach To	<p>Option menus for choosing the type of attachment for the selected object and what to attach the object to. Also includes text fields for specifying the Offset (in pixels) from the selected object and its parent or sibling (a sibling is another object with the same parent) or for specifying the Percentage offset of the selected object from its parent.</p> <p>The option menu below "Attach To:" is for choosing which sibling to attach to and is active only for sibling attachments (two small squares). The Offset text field is active for absolute (pixel) attachments only; the Percentage text field is active for percentage attachments only.</p> <p>The selected object is shown in the center of its four possible attachments. The attachments, starting at the top and going clockwise, are top edge of selected object, right edge of selected object, bottom edge of selected object, and left edge of selected object.</p> <p>Top- and left-edge attachments are illustrated and described below; by default an object is attached at its top and left edges to the top and left edges of its parent. The selected object (the object at the</p>

center of the four Attach To boxes) is the *controlling* object: if you move this controlling object, the pixel or percentage offset is changed; click Reset to see current values after moving an attached object.

If an attached parent object is resized, its child objects will retain their pixel or percentage offsets from the edges of their parent. The offsets will change if a child object is moved.

Sibling icons (two small squares) are inactive if the selected object has no siblings.



An ascending line from the top edge of a small square to the top edge of its surrounding box represents an absolute (pixel offset) attachment of the top edge of the selected object to the top edge of its parent.



A descending line from the top edge of a small square to the bottom edge of its surrounding box represents an absolute (pixel offset) attachment of the top edge of the selected object to the bottom edge of its parent. This value will be negative, since y values are positive as they ascend and negative as they descend.



Two vertically-aligned squares connected by a vertical line represent an absolute (pixel offset) attachment of the top edge of the selected object to the bottom edge of its sibling. The offset will change if the selected object is moved. This value will be negative if the top edge of the selected object is above the bottom edge of its sibling.



Two horizontally-aligned squares connected by a horizontal line to the centers of their top edges represent an absolute (pixel offset) attachment of the vertical center of the selected object to the vertical center of its sibling. The offset will change if the selected object is moved. This value will be negative if the center of the selected object is above the center of its sibling.



A square with a two-headed arrow and a percentage sign above it represents a percentage offset attachment of the top edge of the selected object to the top edge of its parent. The offset will change if the selected object is moved.



A square with a percentage sign above it and a two-headed arrow between the center line of the square and the top of the surrounding box represents a percentage offset attachment of the center of the selected object to the top edge of its parent. The offset will change if the selected object is moved.



A circle with a diagonal line through it represents no attachment from the edge (top, left, bottom, or right) to another object. By default a dropped object has no right or bottom edge attachments.

Note - Descriptions of the attachments to the bottom edge of the selected object are correlatives of the descriptions of the top-edge attachments above. Substitute "bottom" for "top" and "top" for "bottom" for bottom-edge attachments. Normally you will want top- and left-edge attachments only.



A horizontal line from the left edge of the surrounding box to the left edge of a small square represents an absolute (pixel offset) attachment of the left edge of the selected object to the left edge of its parent. The offset will change if the selected object is moved.



A horizontal line from the right edge of the surrounding box to the left edge of a small square represents an absolute (pixel offset) attachment of the left edge of the selected object to the right edge of its parent. The offset will change if the selected object is moved. This value will be negative, since x values are positive to the left and negative to the right.



Two horizontally-aligned squares connected by a horizontal line represent an absolute (pixel offset) attachment of the left edge of the selected object to the right edge of its sibling. The offset will change if the selected object is moved. This value will be negative if the left edge of the selected object is left of the right edge of its sibling.



Two vertically-aligned squares connected by a vertical line to the centers of their left edges represent an absolute (pixel offset) attachment of the horizontal center of the selected object to the horizontal center of its sibling. The offset will change if the selected object is moved. This icon is inactive if the selected object has no siblings. This value will be negative if the center of the selected object is left of the center of its sibling.



A square with a two-headed arrow and a percentage sign above it represents a percentage offset attachment of the left edge of the selected object to the left edge of its parent. The offset will change if the selected object is moved.



A square with a percentage sign to its left and a two-headed arrow between the center line of the square and the left of the surrounding box represents a percentage offset attachment of the center of the selected object to the left edge of its parent. The offset will change if the selected object is moved.

Note - Descriptions of the attachments to the right edge of the selected object are correlatives of the descriptions of the left-edge attachments above. Substitute "right" for "left" and "left" for "right" for right-edge attachments. Normally you will want top- and left-edge attachments only.

▼ To Attach Objects in an Interface

See “Attachments Editor” on page 95 for an illustration of the editor and descriptions of its elements.

- 1. Choose Attachments from the Editors menu in the App Builder primary window to display the Attachments Editor.**

The Attachments Editor can also be displayed by clicking the Attachments button in a property editor or by choosing Attachments from the interface or Module Browser pop-up menu.

- 2. Choose the object type you want to attach to its parent or siblings.**

- 3. Select the object that you want to attach.**

- 4. Select an attachment type.**

If you choose an icon with one small square you are making an attachment from a child object to its parent. If you choose an icon with two small squares you are making a sibling attachment. See “Attachments Editor” on page 95 for descriptions of the types of attachments.

When you make an attachment, the selected object—the object in the center of the four Attach To boxes—is the controlling object. That is, this object can be moved without affecting its parent or sibling. The offset value or percentage value will change to reflect the changed relationship between the two objects.

On the other hand, if you move the other object—the object to which the selected object is attached—the selected object will move so as to maintain its relationship with the other object.

You may have to click Reset after moving an object in the interface before the change is noted in the Attachments Editor.

- 5. Click OK or Apply to apply the changes.**

If you click OK, the Attachments Editor will be dismissed.

Attachment Example: Custom Dialog

Drag and drop an App Builder custom dialog object to see an example of attachments. Each of the buttons at the bottom of the custom dialog are attached to the top and sides of their enclosing dialog panel. They are attached five pixels from the top of the panel and varying percentages from the left edge of the panel (Button1 left edge 10%, right edge 30%; Button2 40% and 60%; Button3 70% and 90%).

The left edge of Button1 will always be 10% from the edge of the panel and the right edge of Button1 will always be 30% from the edge of the panel. Button1 will therefore always be as wide as 20% of the total width of the panel. Button2's edges

are 40% and 60% from the left edge of the panel; Button3's edges are 70% and 90% from the left edge of the panel.

The three buttons will grow and shrink as the panel grows and shrinks, and the distance between them will always be 10% of the total width of the panel.

Testing Menus, Help, and Connections

Many functions of your interface can be tested without generating code and making the application. In both Test Shown Modules and Test Project mode, all build windows except the App Builder primary window are closed, and the App Builder primary window is inactive except for the Build button and the Help menu.

If your project is small, you will probably want to test the entire project. If it is large, you may want to test only selected modules, thus saving the time it takes to load a large project. In Test Project mode the entire project is available. Windows that are designated as not visible at startup (as are custom dialogs by default, for instance) will not be visible.

See “To Show a Hidden Module” on page 31 for instructions if you are going to use Test Shown Modules.

- “To Test a Project or Selected Modules” on page 103
- “To Test Help Volume Access” on page 104
- “To Test On Item Help” on page 104
- “To Test Menus in a Module” on page 105
- “To Test Connections in a Project” on page 106

Test Procedures

▼ To Test a Project or Selected Modules

1. **Click Test Project or Test Shown Modules in the App Builder primary window.**
Depending on which button you selected, all modules in the current project or only shown modules will be tested.

2. Test help, if appropriate.

See “To Test On Item Help” on page 104 for instructions.

3. Test menu displays, if appropriate.

See “To Test Menus in a Module” on page 105 for instructions.

4. Test connections, if appropriate.

See “To Test Connections in a Project” on page 106 for instructions.

5. Click Build to return to build mode.

▼ To Test Help Volume Access

These instructions assume you have created a help menu and attached it to a Help menu on the menu bar of a main window, as described in “Creating Help and Help Connections” on page 71.

1. Display the modules to be tested, if necessary.

If you are not going to test the entire project, you will need to show the modules to be tested. See “To Show a Hidden Module” on page 31 for instructions.

2. Click Test Shown Modules or Test Project, as appropriate.

Click Test Project to test the entire project. Click Test Shown Modules to test selected modules.

3. Test help volume access by choosing one of the help volume chapters (Overview, Tasks, Reference, for example) from the Help menu.

A help volume window with the appropriate help text will be displayed, if the help viewer (`dthelpview`) is accessible and the proper connection has been made to the compiled help volume. See “Creating Help and Help Connections” on page 71 for instructions for creating help and making connections to it. Dismiss the help window when you are finished with it.

4. Click Build to return to build mode.

▼ To Test On Item Help

These instructions assume you have created a help menu and attached it to a Help item on the menu bar of a main window, as described in “Creating Help and Help Connections” on page 71.

1. Display the modules to be tested, if necessary.

If you are not going to test the entire project, you will need to show the modules to be tested. See “To Show a Hidden Module” on page 31 for instructions.

2. Click Test Shown Modules or Test Project, as appropriate.

Click Test Project to test the entire project. Click Test Shown Modules to test selected modules.

3. Test help volume access by choosing one of the help volume chapters (Overview, Tasks, Reference, for example) from the Help menu.

A help volume window with the appropriate help text will be displayed, if the help viewer (`dthelpview`) is accessible and the proper connection has been made to the compiled help volume. See “Creating Help and Help Connections” on page 71 for instructions for creating help and making connections to it. Dismiss the help window when you are finished with it.

4. Test On Item help by choosing On Item from the Help menu.

The cursor will turn into an arrow and a question mark.

5. Move the cursor over an interface object and click.

If the object (or one of its parent objects) has help text, it will be displayed in a quick help window.

6. Click the More button in the quick-help window, if it is active.

The help volume will be displayed, at the location specified in the Location ID for the selected object in the Help Editor. Dismiss the help window when you are finished with it.

7. Click the Close button in the quick help window to dismiss it.

8. Click Build to return to build mode.

▼ To Test Menus in a Module

In Test Shown Modules mode, all windows in the currently-shown modules will be displayed, including those whose initial state is not set Visible. See “To Test a Project or Selected Modules” on page 103 if you want to test the entire project, with not-Visible windows hidden.

1. Display the module to be tested, if necessary.

See “To Show a Hidden Module” on page 31 for instructions.

2. Click Test Shown Modules.

3. Click or press on the items in a menu bar, if appropriate.

The menus will be displayed. If you select a menu item that is connected to certain predefined functions (Show or Hide a dialog, Access Help Volume, Activate On Item Help, for example), the function will be performed.

4. Click each button menu, as appropriate.

The menus will be displayed. If you select a menu item that is connected to certain predefined functions (Show or Hide a dialog, Access Help Volume, Activate On Item Help, for example), the function will be performed.

5. Press mouse button 3 on a pane or list item to display a pop-up menu, if appropriate.

The menus will be displayed. If you select a menu item that is connected to certain predefined functions (Show or Hide a dialog, Access Help Volume, Activate On Item Help, for example), the function will be performed.

6. Click Build to return to build mode.

▼ To Test Connections in a Project

1. Display the modules to be tested, if necessary.

See “To Show a Hidden Module” on page 31 for instructions.

2. Click Test Project.

All build windows except the App Builder primary window will be closed, and the primary window will be inactive except for the Build button and the Help menu. Only windows in the project with an initial state set to Visible will be displayed.

3. Click a button or choose a menu item that has a testable connection.

The following connections should work in test mode as they will work in the compiled application:

- Show
- Hide
- Set Value
- Set Text
- Access Help Volume
- Activate On Item Help
- Enable

- **Disable**

If you connect a button to a custom dialog, for instance, specifying the button as the source object, Activated as the When action, the custom dialog as the target object, and Show as the Action Type, the custom dialog will be displayed when you click the button.

Connections to Call Function and Execute Code will be noted by messages to standard out.

Connections to Application Framework, ToolTalk, and message dialogs are not supported in test mode.

Generating Code and Building an Application

This chapter describes the Code Generator and its use to generate code, add user code to generated code, make the application, and run the compiled application. See “Code Generator Window” on page 128 for an illustration of the Code Generator window and descriptions of its elements.

- “Making and Running an Application” on page 109
- “To Set Code Generator Options” on page 111
- “To Set Environment Options” on page 112
- “To Generate Code From the Command Line” on page 112
- “Adding User Code to Generated Code” on page 113

Making and Running an Application

Two scenarios are described below. In the first scenario, you build and run an application in one step. In the second scenario, you generate code, compile the code, and run the application in separate steps.

In either case, if you have made changes to the project that have not been saved, a message dialog box will be displayed, telling you that you have unsaved edits and giving you the choice of cancelling the generate code process or saving the project. If you choose to save the project, you will have to specify where to save the project if it has not been saved before.

▼ To Make and Run in One Step

1. **Choose Code Generator from the File menu of the App Builder primary window.**

The Code Generator is displayed.

2. **Click Make & Run to generate code, build the application, and run it.**

If you have saved the project and all goes well, a number of messages will be displayed in the output pane at the top of the Code Generator. The final message will be "Running: ./[projectname]" and the application will run.

At the least, the application primary window will be displayed. Any windows whose visibility is not set to yes at application startup will be hidden. Depending on what functionality you included that does not require user code, the application might do a variety of things. Menus can be displayed, some connections can be tested, On Item help can be displayed, and so on.

Note - Ultimately, you must write some code to complete the application. For example, any Call Function callbacks specified in the Connections Editor will have to be substituted for. See "Adding User Code to Generated Code" on page 113 for more information.

▼ To Generate Code, Make, and Run Separately

1. **Click Generate Code to generate code for the current project.**

As the code generator runs, messages are displayed in the output pane at the top of the Code Generator window. The final message should be "Completed successfully." A number of files will be created, including Makefiles, project files, module files, and two `dtb_utils` files. You can look at the files in the term pane at the bottom of the Code Generator window.

2. **Click Make to build the application.**

More messages will be displayed in the Output Pane as the application is compiled. The final message again should be "Completed successfully." A few more files will be created, including object files and the executable application file, which has the name you gave the project.

3. **Click Run to run the application.**

The application will be started—as if you had typed the name of the executable at the command line.

4. **Click Abort to quit the application.**

This will terminate the application, closing all windows. You can also click Abort to terminate code generation or make operations started in the Code Generator window.

▼ To Set Code Generator Options

To change the options that determine what code is generated and other Code Generator functions:

1. **Choose Code Generator from the File menu of the App Builder primary window to display the Code Generator window.**
2. **Choose Generator from the Options menu to display the Code Generator Options dialog box.**
3. **Select one of the Generate Code For options (Entire Project, Main Only, Specific Modules Only, Specific Modules and Main).**

If you select Specific Modules or Specific Modules and Main, the list of modules is active. Select the names of the modules you want to generate code for in the list.

4. **Click Don't Merge if you do not want your hand-edited code merged with the generated code.**

Note - Do not select Don't Merge unless you are sure you want to destroy the user code.

5. **Choose a different message reporting option if you wish.**
Choices are Report Normal Messages, Be Silent, and Be Verbose.
6. **Type Make Arguments, if appropriate.**
These arguments will be included when you click Make or Make & Run.
7. **Type Run Time Arguments, if appropriate.**
These arguments will be included when you click Run or Make & Run.
8. **Click Reset to Defaults to set all fields to their default values.**
Default values are Generate Code For Entire Project, Merge user code with generated code, and Report Normal Messages.
9. **Click OK or Apply to make the changes.**
The Options dialog box will be dismissed if you click OK.

▼ To Set Environment Options

1. **Choose Code Generator from the File menu of the App Builder primary window to display the Code Generator window.**
2. **Choose Environment from the Options menu to display the Environment Options dialog box.**
3. **Type a variable in the Variable Name text field.**
You might want to change `PATH`, for instance.
4. **Click Get to display the current value for the variable in Variable Name.**
The value of the variable will be displayed in the Value pane.
5. **Make a change to Value and click Set to change the value of the variable.**
This change is made for this App Builder session only.
6. **Click Reset to reset Value to its value outside this session of App Builder.**
7. **Click Cancel to dismiss the dialog box.**

▼ To Generate Code From the Command Line

To generate App Builder code from the command line, run `dtcodegen`. Usage is described below.

Usage: `dtcodegen [options] [project-file] [module-file [module-file] ...]`

Code is generated for each module specified on the command line, or for all modules in the project, if no modules are specified. If no project file is specified, a project file containing the specified module(s) is searched for in the current directory.

Files with extension `.bip` are assumed to be BIL project files, files with `.bix` extension are assumed to be encapsulated BIL files, and files with a `.bil` extension are assumed to be BIL module files.

Options (* = default, + = default with no project file)

<code>-help (-h)</code>	Print out this help message
<code>-main</code>	Write file containing <code>main()</code>

-changed	Only generate files that have changed
* -merge	Merge generated <code>_stubs.c</code> files with previous version
-nomerge	Don't merge existing and new stubs file
* -project (-p)	Specify a project to generate code for
-nopproject (-np)	Use default project settings, ignore project file
+ -showall	Application shows (maps) all windows at startup
* -noshowall	Application shows (maps) only initially-visible windows
-silent (-s)	Silent mode, no messages written
-verbose (-v)	Verbose mode, detailed progress messages

Adding User Code to Generated Code

When you generate code for the interface you have developed by clicking Generate Code in the Code Generator window or running `dtcodegen` from the command line, a number of files are generated in the project folder. If your project is called “test” and it has one module, called “mod1,” for instance, the following files will be created:

- Makefile (plus Makefiles for other platforms)
- `dtb_utils.c`
- `dtb_utils.h`
- `mod1.bil` (module file)
- `mod1_stubs.c`
- `mod1_ui.c`
- `mod1_ui.h`
- `test.bip` (project file)
- `test.c`
- `test.h`
- Test (resource file)

If you have made Call Function or Execute Code connections in the Connections Editor, those connections will show up in the generated code. All of the areas of the generated code that may be modified by you are marked with comments of the form:

```
/* DTB_USER_CODE_START */  
  
/* DTB_USER_CODE_END */
```

The area between the START and END comments are considered a “user segment.” Any text (even non-C code) may be added within a user segment, and the code generator will preserve this code in all future versions of the code. Each user segment begins with a comment that suggests what type of code should be added in that segment, or what state the application is in when that segment is executed. These suggestions are purely informational, and may be ignored.

Neither App Builder nor the code generator verify that the code added by you is legal C code. It is your responsibility to ensure that any file you modify can be processed satisfactorily by your compiler.

If you wish to destroy all of the hand-edited code, you must either explicitly select Don't Merge from the Options dialog of the Code Generator Window, or run `dtcodegen` with the `-nomerge` option. This should be done only with great caution, as large amounts of work may be lost.

Under no circumstances should the generated comments be modified. If they are modified, code generation will fail, and the resulting file will very likely be uncompileable. A backup file, with the extension `.BAK`, is preserved in the current directory to help recover from such mistakes.

The user code segments appear in strategic places in the code, to allow you a great deal of freedom in customizing the generated application. All code related to `main()` and application-wide data and structures are defined in `<projectname>.h` and `<projectname>.c`. In these files, fields may be added to the Xt resource data structure for the application, new developer-defined data types and variables may be added, and the application's startup procedures may be amended.

Each `<modulename>_stubs.c` file contains user segments for modifying the effects of generated connections. Your code may be added both before and after the automatically-generated code is executed.

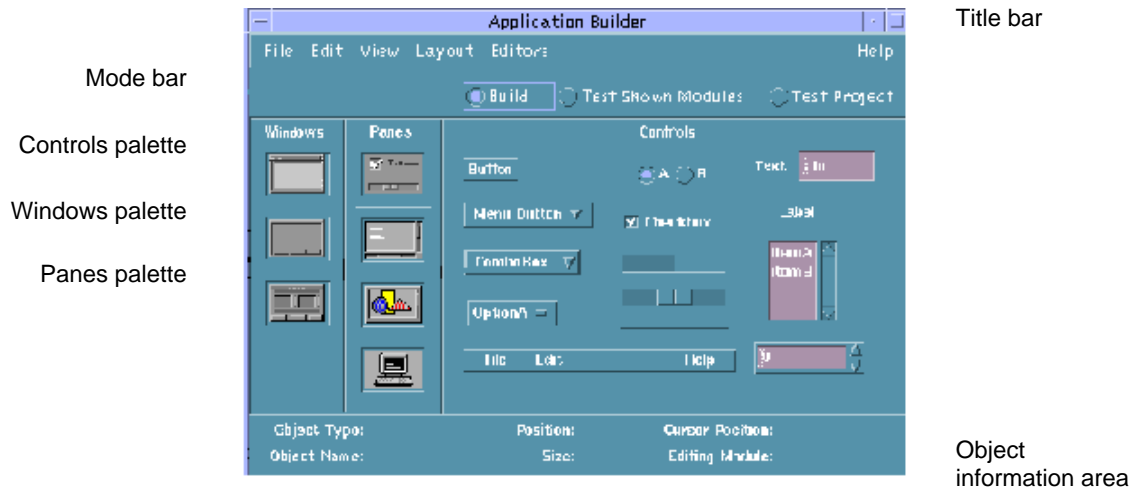
In addition, each file contains a user segment at the top of each file that can be used to add a custom header or copyright notice.

App Builder Windows and Dialog Boxes

This appendix describes the major windows and dialog boxes in App Builder, including illustrations of the windows and dialog boxes and descriptions of the window and dialog box elements.

- “App Builder Primary Window” on page 116
- “Windows Palette” on page 117
- “Panels Palette” on page 119
- “Controls Palette” on page 122
- “Project Organizer” on page 125
- “Module Browser” on page 126
- “Code Generator Window” on page 128

App Builder Primary Window



The App Builder primary window is the starting point for building a graphical user interface. The interface is created by dragging objects from the App Builder object palettes (Windows, Panes, and Controls) to the workspace, editing the properties of the resultant interface objects, and adjusting the layout of the interface. See “Overview of the App Builder Process” on page 17 in Chapter 1, for a summary of the steps involved in creating an interface.

Title bar

Includes the name of the application, “Application Builder,” the window manager menu, a minimize button, a maximize button, the name of the current project (if one is open), and a “(Save Needed)” indication if the current project has changed since being saved.

Mode bar

Includes Build, Test Shown Modules, and Test Project radio buttons for specifying build and test modes.

Build is for designing and building an interface.

Test Shown Modules is for testing help, menus, and connections in current, shown modules. All window objects will be shown, including those for which the initial state is not set to Visible.

Test Project is for testing help, menus, and connections in the current project. Objects for which the initial state is not set to Visible will not be shown.

Windows palette

Includes the three App Builder window objects: main window, custom dialog, and file selection dialog. Window objects are dropped on the workspace. See “Windows Palette” on page 117 below for details.

Panes palette

Includes the four App Builder pane objects: control pane, text pane, draw area pane, and term pane. Pane objects are dropped on main windows, custom dialogs, or other panes. See “Panes Palette” on page 119 for details.

Controls palette

Includes 14 App Builder control objects: button, menu button, combo box, option menu, menu bar, radio box, check box, gauge, scale, separator, text field, label, list, and spin box. Control objects are dropped on control panes. See “Controls Palette” on page 122 for details.

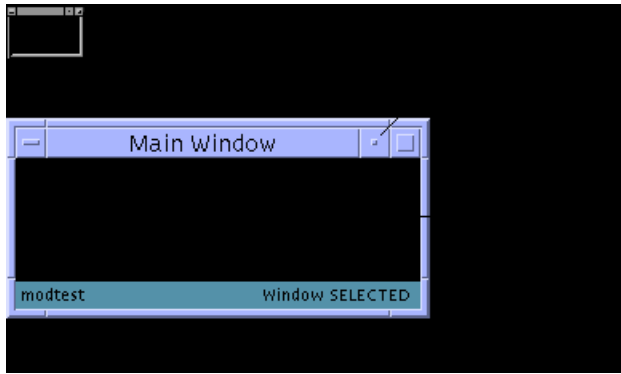
Object information area

Provides information about the object beneath the cursor. See “Object Information Area” on page 124 for details.

Windows Palette

The Windows palette contains three objects: main window, custom dialog, and file selection dialog.

Main Window

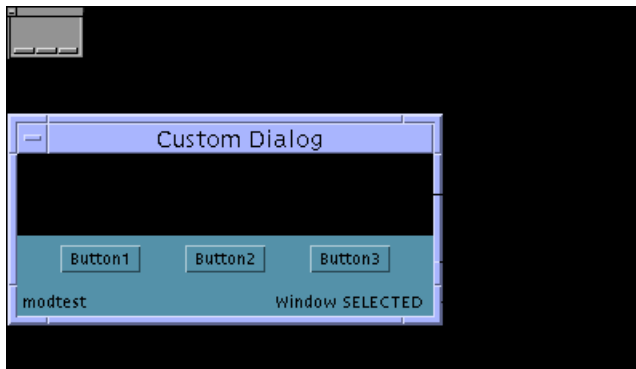


A *main window* is the basic App Builder object. It is created by dropping a main window icon on the workspace. The starting point for a user interface is built in a main window. A main window has a minimize button and therefore can be iconified.

The status region includes the name of the module the window is part of and indicates when the window object is selected. It does not appear in the compiled application.

Examples of main windows used in building App Builder itself are the App Builder primary window, the Project Organizer, the Module Browser, and the Code Generator.

Custom Dialog

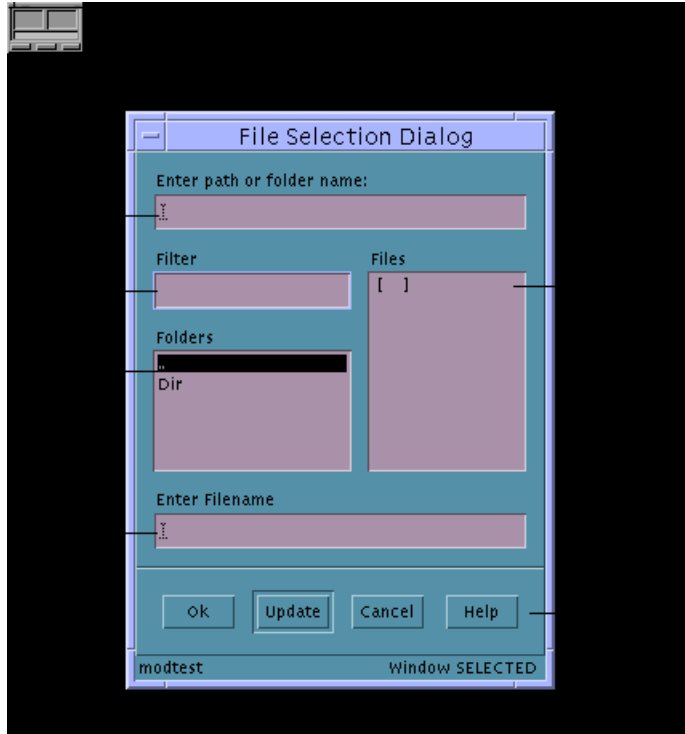


A *custom dialog* is a window for displaying information or providing a pop-up for a specific task within an interface. It is created by dropping a custom dialog icon on the workspace. A custom dialog might be "connected" to a button or a menu in a main window, causing the pop-up dialog to be displayed when the button is clicked or a menu item is chosen. A custom dialog cannot be closed to an icon.

The status region includes the name of the module the dialog is part of and indicates when the dialog object is selected. It does not appear in the compiled application.

Examples of custom dialogs used in building App Builder include the File Selection Dialog, the Project Name and Module Name dialog boxes, all of the editors, and the message dialog boxes.

File Selection Dialog



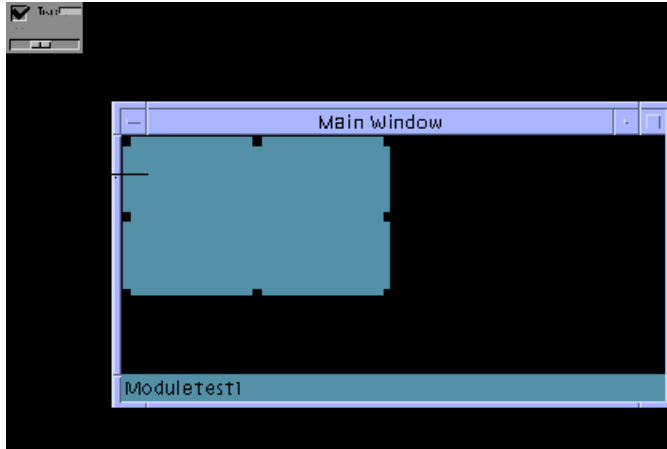
A *file selection dialog* is a specialized pop-up dialog for specifying a file in an Open or Save operation. It is created by dropping a file selection dialog icon on the workspace.

The status region includes the name of the module the dialog is part of and indicates when the dialog object is selected. It does not appear in the compiled application.

Panes Palette

The Panes palette contains four objects: control pane, text pane, draw area pane, and term pane. All panes can be dropped on a main window, a custom dialog, or another pane. If a pane is dropped on a pane, the dropped pane will become a child of the first pane or a layered pane will be created. See “To Create a Layered Pane” on page 48 ”in Chapter 5 ,” for more information.

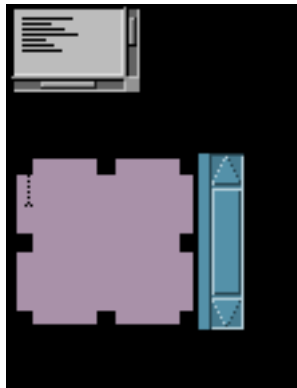
Control Pane



A *control pane* is the drop site for App Builder controls. It is created by dropping a control pane icon on a main window, a custom dialog, or another pane. In the figure above, a control pane has been dropped on the top-left corner of a main window, in anticipation of resizing it to fill the entire canvas.

Examples of control panes used in building App Builder include the pane on which the three panes palettes reside on the App Builder primary window and the pane beneath the controls on each of the property editors.

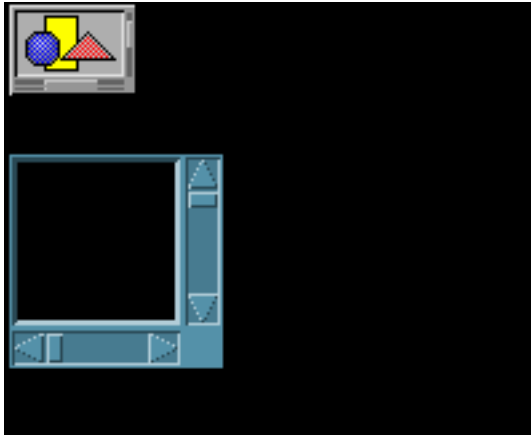
Text Pane



A *text pane* is a multi-line text-entry area in the completed application. It is created by dropping a text pane icon on a main window, custom dialog, or another pane.

Examples of the use of text panes in building App Builder include the Initial Value field in the Text Pane property editor and the Help Text field in the Help Editor.

Draw Area Pane

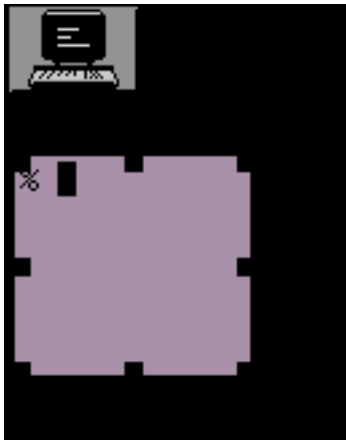


A *draw area pane* is used as a drawing or display area in the completed application. It is created by dropping a draw area pane icon on a main window, custom dialog, or another pane.

Note the horizontal and vertical scroll bars, which enable you to view objects outside the current view area.

Examples of the use of draw area panes in building App Builder include the panes displaying modules and module objects in the Module Browser, and the pane displaying modules in the Project Organizer.

Term Pane



A *term pane* is a terminal emulation object which accepts user input and echoes standard output. It is created by dropping a term pane icon on a main window, custom dialog, or another pane.

Controls Palette

The Controls palette contains 14 objects, including buttons, lists, text fields, and a menu bar. To find out how to edit the properties of these objects, see Chapter 4. To find out how to create menus and submenus and attach them to objects, see “Creating and Editing Menus” on page 52 in Chapter 5.

Button	A control which, when clicked, performs a specified action. A button can be a push button, a drawn button, or a menu button, settable in the Button property editor. A drawn button, like a push button, performs a specific function when clicked; the label on a drawn button, however, can change dynamically, depending on the status of the application.
Menu Button	A specialized button, ready for attachment of a menu. Note that there is no menu button property editor; edit the properties of a menu button in the Button Property Editor.
Combo Box	A combination text field and option menu object. As with an option menu, you can select an item from a pop-down menu, but you can also edit any of the items in the list—if you have checked “Editable” in the property editor, and if you write code to make it work.
Option Menu	One of the three “choice” objects (option menu, radio box, check box). When you click on an option menu, a menu is displayed, providing a choice of items to choose from. The chosen item remains in the option menu box and becomes the active choice. Examples of option menus in App Builder are Object Type in the property editors and Source and Target in the Connections Editor. An option menu is an exclusive-choice object.
Radio Box	One of the three “choice” objects (option menu, radio box, check box). A radio box is comprised of a label and two or more round buttons representing application functions, only one of which can be selected (hence the term “radio button,” named for the type of buttons on an automobile radio). A radio box is an exclusive-choice object.

Check Box	One of the three "choice" objects (option menu, radio box, check box). A check box is comprised of a label and one or more check boxes, each with its own label. Each check box has a "binary" (on or off) state, and each is independent of the other. A check box is a nonexclusive-choice object.
Gauge	One of two "scale" objects (gauge, scale). A gauge is used to indicate a value.
Scale	One of two "scale" objects (gauge, scale). A scale, like a gauge, indicates a value, but a user can modify the value of a scale by moving the slider.
Separator	A horizontal or vertical line used to indicate separate functions in an application window.
Menu Bar	A horizontal bar of menu buttons arrayed across the top of a main window. The buttons are cascade buttons, for attaching menus. The default menu bar includes File, Edit, and Help topics. You can change, delete, or add to this group of topics. Note that the menu bar is not strictly a control object: it is a control pane with three buttons.
Text Field	A single-line text-entry area with a label (in contrast to a text <i>pane</i> , which is a multi-line text-entry area).
Label	A text string or graphic icon which can be attached to an object for identification purposes.
Scrolling List	An object for listing selectable options. A scrolling list is comprised of a variable-length list with scroll bars and an optional label. A list can allow single or multiple selections, and it can include a pop-up menu.
Spin Box	An object for selecting from a number of choices, only one of which is visible at any one time. A spin box is comprised of a text field, a label, and a set of arrows for sequencing through the choices.

Object Information Area

The object information area provides information about the object directly beneath the cursor—either on one of the primary window palettes or in the user interface. It includes the following information fields:

Object Type	The type of object beneath the cursor (main window, control pane, text field, for example). This field is active in the App Builder primary window, so you can use it to identify object types in the object palettes.
Object Name	The name of the interface object beneath the cursor. This name, in combination with the module name, uniquely identifies App Builder objects. Palette objects do not have names, so the field will be blank if the cursor is over the App Builder primary window. Note that all palette objects are given unique names when they are instantiated in the interface; you can change the name in the property editor for the object.
Position	<p>The (x,y) pixel coordinates of the top-left corner of the object beneath the cursor, measured in the coordinate system of the object that contains it. If the object is a window object (main window, custom dialog, or file selection dialog), the position will be relative to the top-left corner of the monitor screen.</p> <p>If the object is a pane that was dropped on the top-left corner of a window, its position will be 0,0, since 0,0 are the coordinates of the top-left corner of the parent window. A pane that is dropped on another pane and made a layered pane also has coordinates of 0,0.</p> <p>If the object is a control or a pane that has been made a child of a control pane, its coordinates are measured from the top-left corner of the parent object to the top-left corner of the child object.</p>
Size	The size, in pixels, of the object beneath the cursor, in the form "width X, height Y."
Cursor Position	The (x,y) pixel coordinate location of the cursor, measured in the coordinate system of the object that contains it. Every object, including controls,

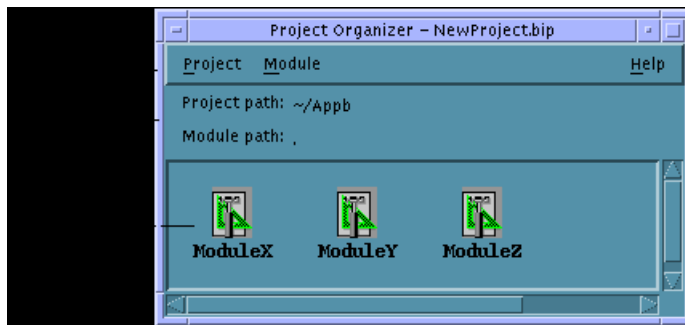
has its own coordinate system. Some compound objects, comprised of more than one widget, have multiple coordinate systems; a custom dialog, for instance, includes a control pane, a tool bar, and buttons, each with its own coordinate system.

Editing Module

The name of the module currently being edited. Any window dragged from the Windows palette becomes part of that module. If more than one module is shown on the workspace, you can change the current module by selecting an object in another module.

Project Organizer

The Project Organizer is used to open, save, or close a project, and to save, show, hide, import, export, or remove modules.



Location

A control pane with Project Path and Module Path fields; indicates the full-path location of the current project and the relative path to modules. The module will normally be in the same folder as the project, and its path will be noted as "." ("dot," signifying the current folder).

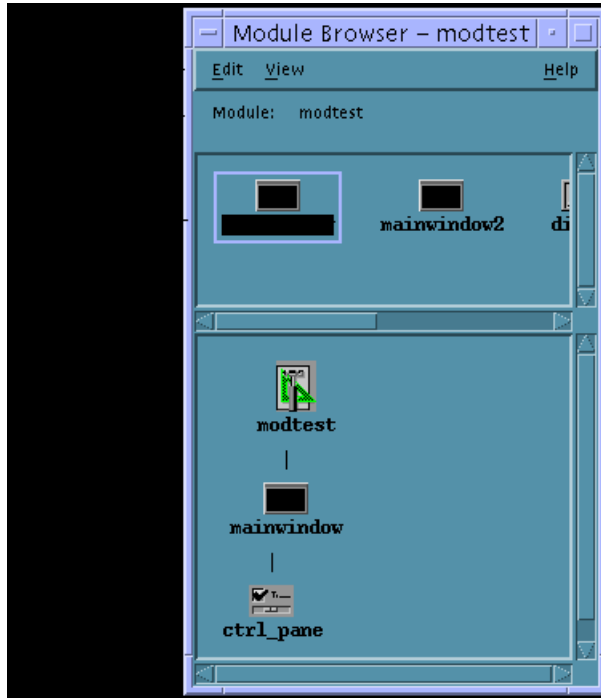
Module Array

A draw area pane that depicts each of the modules in the current project as a single icon with the module name beneath the App Builder icon.

Module Browser

The Module Browser (also called the browser) provides a hierarchical, tree view of a module. Use it to view modules, edit the interface, group or ungroup objects, create connections, and display object property editors for editing. About the only things you can't do in the Browser that you can do in the interface is move or align objects.

To display the Browser, choose Module Browser from the View menu in the App Builder primary window and select a module in the pull-right menu displayed or select an object in the interface and Choose Browse from the pop-up menu (displayed by pressing mouse button 3 in the interface).



Edit menu

Includes the same functions as the Edit menu in the App Builder primary window: Undo, Cut, Copy, Paste, and Delete. If you select an object or objects in the Browser and choose a menu item, the objects selected will be selected in the interface and the function chosen will be performed in the interface.

View menu

Horizontal displays child objects to the right of their parent object. Toggles with *Vertical*, which displays child objects below their parent object. *Vertical* is the default view.

Hide Object Glyph hides the icons/glyphs that represent the objects in the interface. Toggles with *Show Object Glyph*, which is the default.

Show Object Type displays the object types of objects in the interface. Toggles with *Hide Object Type*, which is the default.

Collapse "undisplays" the children of selected parent objects. This enables you to see more of the interface in a smaller space.

Expand displays the children of selected collapsed parent objects.

Expand All expands all collapsed parent objects.

Module displays the module chosen from the submenu.

Find displays a Find Object dialog box, for finding objects by object name; if the object is found, the object is selected and the canvas scrolls to show the object.

Tearoff Browser displays a new browser, enabling you to view more than one module.

Module name

Indicates the module being viewed. Can be changed through the View menu.

Top-level view

Shows all direct children of the module—windows, menus, and messages. A detailed view of each of the objects selected here is shown in the detailed tree view.

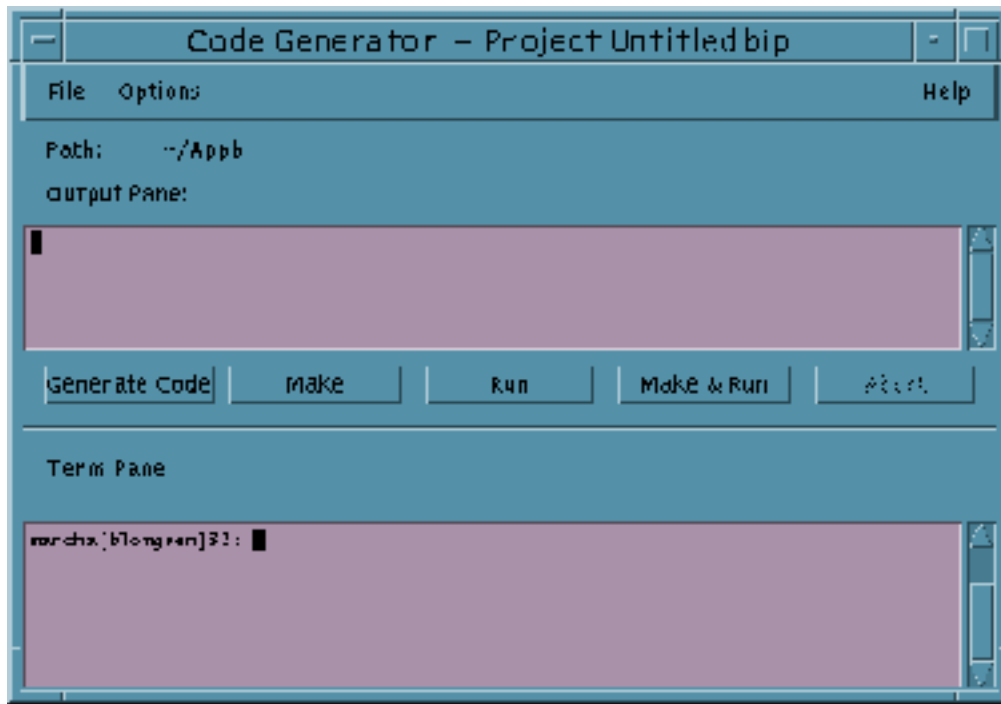
Detailed tree view

Shows a detailed view of the top-level objects selected. All children of the selected top-level objects are shown.

Note - When you group objects or edit the interface in the Browser, be sure to check the interface to see that you haven't obscured any objects. In particular, if you group objects, the rectangular group created may hide an object behind it.

Code Generator Window

The Code Generator window is used to generate code for the created interface and to make and run the completed application. Display the window by choosing Code Generator from the File menu of the App Builder primary window.

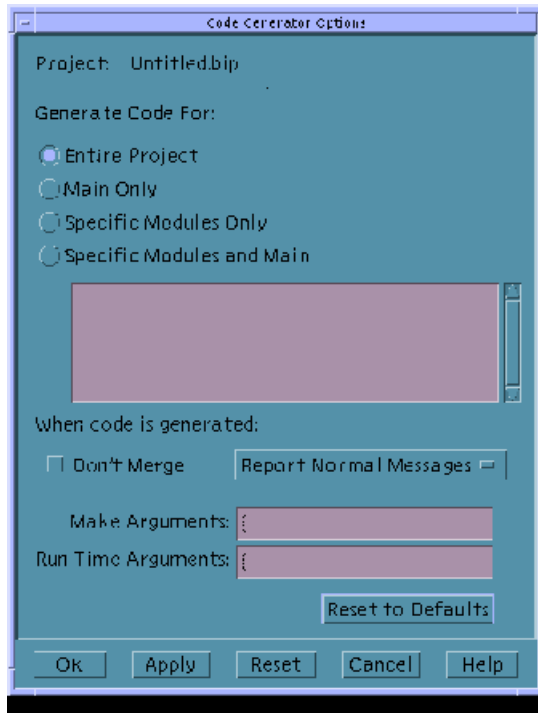


- Path** Indicates the path to the current project, which is included in the title bar at the top of the window.
- Output Pane** Refers to the text pane below this label. The results when you click on the buttons below the pane are displayed in this text pane. (The functions of the buttons also appear as menu items in the File menu.)

Generate Code	Generates code for the current project. The output for this action is displayed in the output pane.
Make	"Makes" the application for the current project. The output for this action is displayed in the Output Pane.
Run	Runs the compiled application after generating code and making the application. The output for this action is displayed in the Output Pane. The primary window for the compiled application will be displayed.
Make & Run	Combines the functions of the first three buttons (Generate Code, Make, Run). The output for this action is displayed in the Output Pane. The primary window for the compiled application will be displayed.
Abort	Aborts the currently running function. If the compiled application is being run, clicking Abort quits the application.
Term Pane	Performs any terminal emulation functions.

Code Generator Options Dialog Box

The Code Generator Options dialog box, accessible from the Options menu in the Code Generator window, is used to set options that determine what will happen when various Code Generator functions are performed.



Project	The name of the current project.
Generate Code For	Specifies whether code will be generated for Entire Project, Main Only, Specific Modules Only, or Specific Modules and Main. If one of the latter two choices is specified, the modules in the scrolling list are active.
Don't Merge	Specifies whether user-written code will be merged into the generated code; if you check Don't Merge, any user-written code will be discarded when code is generated.
Report Normal Messages	Determines whether Normal Messages will be displayed in the output pane when code is generated, whether no messages will be generated (Be Silent), or whether all messages will be displayed (Be Verbose).
Make Arguments	Specifies what arguments will be appended to the Make command when it is run in the Code Generator.

Run Time Arguments

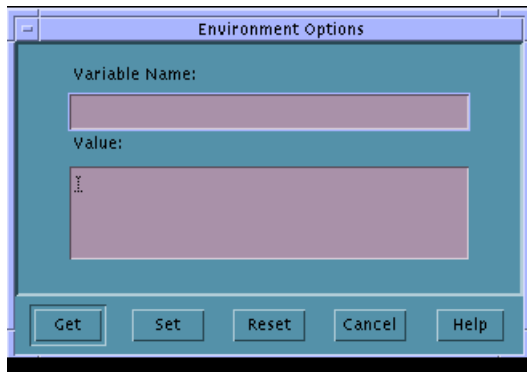
Specifies what arguments will be appended to the Run command when it is run in the Code Generator.

Reset to Defaults

Resets all Code Generator Options settings to their default values.

Code Generator Environment Options Dialog Box

The Code Generator Environment Options dialog box, accessible from the Options menu in the Code Generator window, is used for specifying a Variable Name and a Value for the variable, which value will be used for functions performed in the Code Generator window.

**Variable Name**

Specifies the name of an environment variable.

Value

Specifies a value for the variable specified in Variable Name. This value is only set for the Code Generator window and has no effect on the value of the variable outside of the Code Generator.

Get

Gets the current Code Generator value of Variable Name and displaying it in the Value text field.

Set

Sets Variable Name to the value in Value. This value is set for Code Generator window functions only.

Reset

Resets Value for Variable Name to its value as set outside of the Code Generator.

Cancel

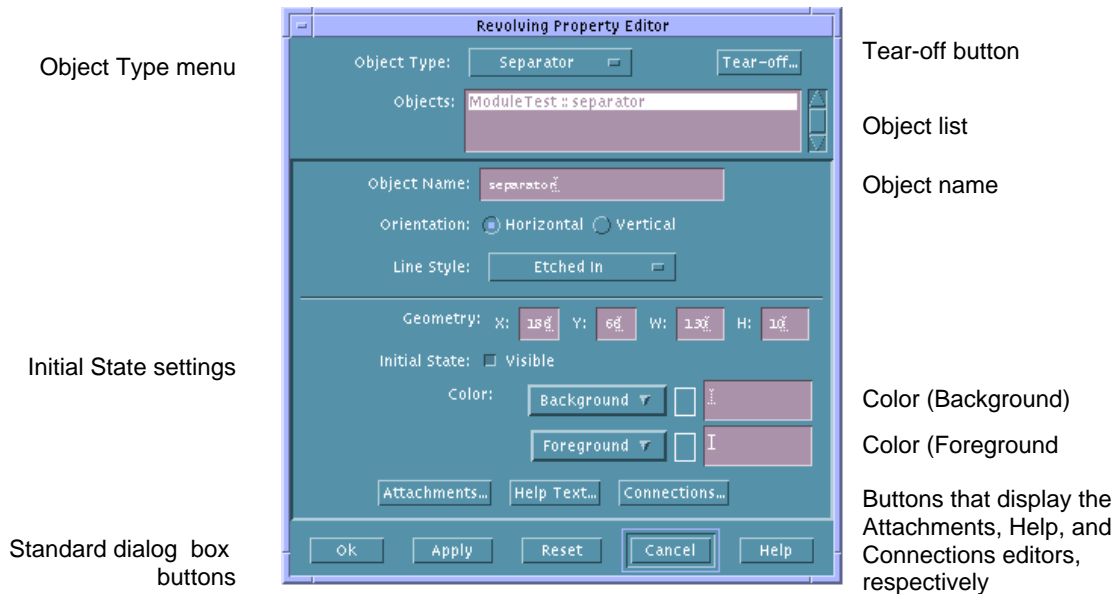
Cancels any changes made to Value and closes the Environment Options dialog box.

Revolving Property Editor

Used to edit the *properties* (the look or functionality) of interface objects, the Revolving Property Editor customizes your application interface. This appendix describes the properties common to all property editors, and the properties and the buttons common to a number of property editors. It also describes the individual property editors for each object.

- “Property Editor: Universal Properties” on page 134
- “Property Editor: Common Properties” on page 135
- “Property Editor: Common Buttons” on page 137
- “Individual Property Editors” on page 139

The property editor for a separator, which includes the properties common to almost all property editors, is shown below, with common elements noted.



Property Editor: Universal Properties

The property editor for each of the App Builder objects is unique, but there are a number of properties common to almost all of them.

Object Type

Not a property. Object Type is an option menu for choosing the type of property editor to be displayed. Properties change depending on which object type is chosen.

Objects

Not a property. Objects lists the objects of the selected object type in the current project. The list displays the full, unique name for each object, which is comprised of the name of the module in which the object exists, two colons, and the Object Name.

Object Name

Displays the default name or the name given by you to the object selected in the Objects list.

Initial State, Visible	Specifies whether the selected object is visible when the application starts up; all objects except a custom dialog are visible by default.
Initial State, Active	A check box for specifying whether the object selected is "active" when the application starts up. An inactive object is not functional: it is dimmed and no functions can be activated from the object.
Color: Background	Specifies the background color of the selected object. You can either type in a known color name or choose Color Chooser from the menu and select a color from the palette displayed.
Color: Foreground	Specifies the foreground color of the selected object. You can either type in a known color name or choose Color Chooser from the menu and select a color from the palette displayed.

Property Editor: Common Properties

The following properties are common to three or more property editors.

Border Frame	Determines the type of border, if any, around certain objects. Choices are None, Shadow Out, Shadow In, Etched Out, and Etched In.
Geometry	Indicates the X and Y location of the selected object, and the W(idth) and H(eight) of the object. X and Y values specify the position of the selected object in relation to its parent. The values are in pixels and are measured from the top-left corner of the parent object to the top-left corner of the child object. W and H values are in pixels.
Graphic Filename	Indicates the name of the pixmap (.pm) or bitmap (.bm) file that contains the graphic to be used as the label for the selected object or item. This property is available only if Label Type or Item Label Type is "Graphic."

Item Label Type	Specifies the type of label (String or Graphic) for the selected item in the Items list. If Graphic is chosen, "Label" becomes "Graphic Filename."
Item State, Active	Specifies whether the selected item will be active when the compiled application is opened.
Items	Lists the labels that represent the items in the list. When an item is selected in the Items list, its label is displayed in the Label or Graphic Filename field.
Label (Object/Item)	Specifies the label for the selected object or item. "Label" becomes "Graphic Filename" if Graphic Label Type is chosen. Label is inactive in the Button property editor if Arrow Label Type is chosen.
Label Type	Specifies the type of label (String, Graphic, or Arrow) for the selected object. If Graphic is chosen, "Label" becomes "Graphic Filename." If you choose Arrow, the label in the Button property editor becomes an arrow and the Arrow Direction property becomes active.
Menu Title	Specifies the (optional) title of the pop-up menu, if any.
Popup, Pulldown Menu	A menu button and a text field for creating, attaching, de-attaching, or editing a pop-up or pull-down menu for the selected object. When the Menus button is clicked, a menu with four choices (None, Create New Menu, Menus, Edit Current) is displayed. Menus and Edit Current are inactive if no menus exist in the current project. If a menu is already attached to the selected object, the menu name will be displayed in the text field.
Position (Label)	Specifies the position (Left or Above) of the label in relation to the selected object. This Position option menu is next to the Label Type option menu.
Position [XY]	Indicates the X and Y location of the selected object in relation to its parent. The values are in pixels and are measured from the top-left corner

of the parent object to the top-left corner of the child object.

Scrollbars

Specifies when scroll bars should be attached to the selected pane. The choices are Never and Always for a term pane or a text pane, and Never, When Needed, and Always for a draw area pane.

Size

Specifies the absolute W(idth) and H(eight) of the window or pane. These values change if you resize the window or pane manually in the interface. For a term pane or a text pane, there is an option menu for choosing Characters or Pixels as the unit value.

Size Policy

Specifies whether the selected object should retain a fixed size or if it should become bigger or smaller depending on the contents of the object. The choices are Size of Label and Fixed for buttons and labels, Fit Contents and Fixed for main windows and custom dialogs.

Note - List item editing: once you have the appropriate number of items in the list, the easiest way to perform item editing in those property editors that have an item list* is to select the first item in the list, thus selecting it in the label text field. Type a new name for the item and click Return. The new name will be displayed in the item list and the next item in the list will be selected. Continue down the list with this select, type, Return sequence until all items are completed. * Property editors with item lists include the choice objects (Radio Box, Check Box, Option Menu), Combo Box, List, Menu, Menubar, and Spin Box.

Property Editor: Common Buttons

The following functional push buttons or menu buttons are common to many property editors. The buttons at the bottom of the property editors (OK, Apply, Reset, Cancel, and Help) are common to other editors and dialog boxes.

Tear-off

Displays a property editor of the selected type; use this when you want to edit a specific object type while viewing other types of objects in the Revolving Property Editor.

Add Item	Adds an item after the selected item in the Items list. Added items are given default names starting with "Item1" and incrementing, as needed. By default, items are added after the selected item.
Edit	Performs edit functions (Add After, Add Before, Change, Cut, Copy, Paste, Delete) in a list. Add After and Add Before add an item to the list either after or before the selected item. Change applies the change that you have made. Cut, Copy, Paste and Delete act on the selected item, in the normal way: Cut and Copy place the selected item in a buffer, ready for Paste. Delete removes the item, but does not place it in a buffer.
Attachments	Displays the Attachments Editor; there is no Attachments button on the Main Window, Menubar, Custom Dialog, or Paned Window property editors.
Help Text	Displays the Help Editor.
Connections	Displays the Connections Editor.
OK	Applies the changes made to the selected object and dismisses the editor; changes to properties are marked with change bars at the left side of the editor.
Apply	Applies the changes made to the selected object, but does not dismiss the editor.
Reset	Resets all changes made since the last Apply.
Cancel	Resets all changes made since the last Apply and dismisses the editor.
Help	Displays help for the editor. See "Creating Help and Help Connections" on page 71 for information about App Builder help.

Individual Property Editors

An individual property editor is displayed by:

- Double-clicking an object in the interface or the Module Browser.
- *Or*, selecting an object of the desired type and choosing Properties from the Editors menu on the App Builder primary window.
- *Or*, choosing Props from the interface or Browser pop-up menu.
- *Or*, choosing the desired object type from the Object Type options menu at the top of the Revolving Property Editor.

The individual property editors are described in the following sections.

Button Property Editor

Only properties unique to a button object are described here. See “Property Editor: Universal Properties” on page 134 for descriptions of Object Type, Objects, Object Name, Initial State, and Color. See “Property Editor: Common Properties” on page 135 for descriptions of Label Type, Label, Pulldown Menu, Size Policy, and Geometry.

Button Type	Specifies what kind of button (Push, Drawn, Menu) the selected button should be. Push button is the default. Selecting Menu transforms the push button into a menu button, as if you had dragged and dropped a menu button from the controls palette. The Pulldown Menu property becomes active if you select Menu. See “Controls Palette” on page 122 in Appendix A, for descriptions of button types.
Label Alignment	Specifies the alignment (Left, Right, Centered) of the button label within the button border frame. Label Alignment is relevant only if Fixed is selected as Size Policy. This menu is inactive if Arrow Label Type is chosen.
Arrow Direction	Specifies which direction (Up, Down, Left, Right) the arrow should point if Arrow Label Type is chosen.

Choice Property Editor

Only properties unique to a choice object (Radio Box, Check Box, Option Menu) are described here. See “Property Editor: Universal Properties” on page 134 for descriptions of Object Type, Objects, Object Name, Initial State, and Color. See “Property Editor: Common Properties” on page 135 for descriptions of Label Type, Label Position, Label (Object), Items, Item Label Type, Label (Item), Item State (Active), and Position [XY].

Choice Type	Specifies which type of choice object (Radio Box, Check Box, or Option Menu) the selected object should be. The object changes form depending on which you choose. Note that there is a control object for each of the choice types in the Controls palette. See “Controls Palette” on page 122 in Appendix A for descriptions of choice types.
Rows/Columns	Specifies whether the radio box or check box should be laid out in rows or columns, and how many rows or columns there should be. Not relevant for an option menu.
Item State, Selected	Specifies whether the selected item will be selected when the compiled application is opened. Only one item can be selected. For a check box or a radio box object, the selected item will be marked as selected; for an option menu, the label for the selected object will be displayed in the option menu when the application is opened.

Combo Box Property Editor

Only properties unique to a combo box are described here. See “Property Editor: Universal Properties” on page 134 for descriptions of Object Type, Objects, Object Name, Initial State, and Color. See “Property Editor: Common Properties” on page 135 for descriptions of Label Type, Label Position, Label, Items, Item Label, and Position [XY].

Combo Box Type	Specifies whether the text field for the selected combo box will be Static or Editable in the compiled application. If Editable is selected, code must be written to implement the edit functionality.
-----------------------	--

Selected	Specifies which item will be selected when the compiled application is opened.
Width	Specifies whether the combo box shrinks or grows to accommodate the Longest Item in the list, or if the Width of the box is Fixed. If Fixed is selected, the Width value can be edited.

Control Pane Property Editor

There are no properties unique to a control pane. See “Property Editor: Universal Properties” on page 134 for descriptions of Object Type, Objects, Object Name, Initial State, and Color. See “Property Editor: Common Properties” on page 135 for descriptions of Border Frame, Size Policy, Geometry, Popup Menu, and Menu Title.

Custom Dialog Property Editor

Only properties unique to a custom dialog object are described here. See “Property Editor: Universal Properties” on page 134 for descriptions of Object Type, Objects, Object Name, Initial State, and Color. See “Property Editor: Common Properties” on page 135 for descriptions of Size Policy and Size.

Dialog Title	The title that appears at the top of the custom dialog.
Window Parent	An option menu for specifying a parent main window for the selected custom dialog. Choices are None and any main window in the project. If a main window is specified as a window parent, the custom dialog will be iconified and de-iconified with the main window. Note that this functionality does not work in test mode, but it does in the compiled application.
User Resize Mode	Specifies whether the window is Fixed or Adjustable (whether it can be resized in the compiled application).
Dialog Areas	Specifies whether a custom dialog includes a Button Panel (three buttons, by default) and a Footer area.
Default Button	Specifies one of the dialog buttons as the selected button, by default. The function represented by

the selected button will be performed if you press Return while the mouse cursor is in the custom dialog in the compiled application.

Help Button

Specifies one of the dialog buttons as the help button. See “Creating Help and Help Connections” on page 71, for a description of the Help Editor and instructions for creating help.

Draw Area Pane Property Editor

Only the one property unique to a draw area pane object is described here. See “Property Editor: Universal Properties” on page 134 for descriptions of Object Type, Objects, Object Name, Initial State, and Color. See “Property Editor: Common Properties” on page 135 for descriptions of Scrollbars, Border Frame, Geometry, Popup Menu, and Menu Title.

Total Canvas Size

Specifies the W(idth) and H(eight) of the draw area canvas. Note that only a portion of the canvas will be visible if the draw area pane’s size is smaller than the canvas size (400 by 400 pixels, by default). You can use the scroll bars to view other parts of the canvas.

File Selection Dialog Property Editor

Only properties unique to a file selection dialog object are described here. See “Property Editor: Universal Properties” on page 134 for descriptions of Object Type, Objects, Object Name, Initial State, and Color.

Window Parent

Specifies the main window parent of the file selection dialog. When displayed, the file selection dialog will appear over its main window. By default, the Primary Main Window is the parent of all file selection dialogs.

Dialog Title

Specifies the title that appears in the title bar at the top of the file selection dialog.

Initial Directory

Specifies the folder (directory) set as the starting value in the Path field of the file selection dialog.

Search Pattern Type	Specifies whether files, directories (folders), or both will be listed in the Files list of the file selection dialog.
Search Pattern	Specifies the value of the Filter field in the file selection dialog. The Filter value limits the files that will be listed in the Files field. The default value is * (asterisk), which means all files in the current folder will be listed. The Filter value for the Import Module file selection dialog in App Builder is *.bil, which means that only files that end in .bil will be listed.
OK Button Label	Specifies the label that will appear on the button in the left-most position at the bottom of the file selection dialog, normally labelled "OK." Clicking this button completes the file selection process and dismisses the file selection dialog. This button is labelled "Import" for the Import Module file selection dialog in App Builder.
Popdown Behavior	Specifies whether the file selection dialog will be automatically dismissed (the default) when the OK button is clicked.

Group Property Editor

Used to modify the layout and framing of groups, the Group Property Editor can be displayed by choosing Groups from the Editors menu of the App Builder primary window or by choosing Group from the Revolving Property Editor Object Type option menu. A group, unlike most of the objects edited in the Revolving Property Editor, is a created object and is not available from an object palette. See “Grouping Objects” on page 91, for instructions.

Only properties unique to a group object are described here. See “Property Editor: Universal Properties” on page 134 for descriptions of Object Type, Objects, Initial State, and Color. See “Property Editor: Common Properties” on page 135 for descriptions of Border Frame and Position.

Note that choosing Groups from the Editors menu in the App Builder primary window is the same as clicking the Tear-off button in the Revolving Property Editor when the Object Type is Group.

Group Name	Displays the default name or the name given by you to the group selected in the Objects list.
-------------------	---

Layout Type	Specifies As-Is, Vertical, Horizontal, or Row/Column layout of the objects in the selected group.
Rows Columns	Specifies whether the primary layout will be by rows (vertical layout) or columns (horizontal layout), and how many rows or columns to display. Active only if Layout Type is Row/Column.
Vert Alignment	Specifies left-edge, colon/label, center-line, or right-edge alignment of the objects in the selected group. Active only if Layout Type is Vertical or Row/Column.
Spacing	Specifies the number of pixels separating the objects in the selected group. Vert Alignment Spacing is active only if Layout Type is Vertical or Row/Column. Horiz Alignment Spacing is active only if Layout Type is Horizontal or Row/Column.
Horiz Alignment	Specifies top-edge, center-line, or bottom-edge alignment of the objects in the selected group. Active only if Layout Type is Horizontal or Row/Column.

Label Property Editor

Only the property unique to a label object is described here. See “Property Editor: Universal Properties” on page 134 for descriptions of Object Type, Objects, Object Name, Initial State, and Color. See “Property Editor: Common Properties” on page 135 for descriptions of Label Type, Label, Size Policy, and Geometry.

Note that no border appears around a label in the compiled application. See “To Create a Border Around an Object” on page 94 in Chapter 7, if you want a border around a label.

Label Alignment	Specifies the alignment (Left, Right, Centered) of the label within its margins. Label Alignment is relevant only if Fixed is selected as Size Policy.
------------------------	--

List Property Editor

Only properties unique to a list object are described here. See “Property Editor: Universal Properties” on page 134 for descriptions of Object Type, Objects, Object Name, Initial State, and Color. See “Property Editor: Common Properties” on page 135 for descriptions of Label Type, Position (Label), Label, Items, Item Label, Position [XY], Popup Menu, and Menu Title.

Selection Mode	<p>Specifies how objects can be selected in a scrolling list. Choices are Single Select, Browse Select, Multiple Select, and Browse Multiple Select.</p> <p>In Single Select mode, only one item can be selected, by clicking mouse button 1.</p> <p>In Browse Select mode, one item can be selected, but you can press mouse button 1 and drag through the list until the item you want is selected.</p> <p>In Multiple Select mode, you can make multiple, discontinuous selections with mouse button 1.</p> <p>In Browse Multiple Select mode, you can drag the cursor over items to make multiple, contiguous selections, and you can make a multiple, contiguous selection between a selected item and the cursor location with Shift-mouse button 1.</p>
Selected	<p>Specifies whether an item will be selected at application startup.</p>
Width	<p>Specifies whether the list object shrinks or grows to accommodate the Longest Item in the list, or if the W(idth) of the box is Fixed. If Fixed is selected, the W(idth) value can be edited.</p>
Height	<p>Specifies the number of text Lines in the list or its Pixels height.</p>

Main Window Property Editor

Only properties unique to a main window object are described here. See “Property Editor: Universal Properties” on page 134 for descriptions of Object Type, Objects,

Object Name, Initial State (Visible), and Color. See “Property Editor: Common Properties” on page 135 for descriptions of Size Policy and Size.

Window Title	Specifies the title that appears at the top of the main window.
Icon File	Specifies the name of the graphics file that contains the graphical representation of the application icon—the object that is displayed when the application is "iconified" by clicking on the minimize button in the title bar.
Icon Mask File	Specifies the name of the graphics file that contains the bitmap that determines the shape of the visible representation of the icon beneath the icon mask. The icon mask acts like a stencil, allowing only the pixels in the icon that correspond to pixels in the mask to be visible.
Icon Label	Specifies the text label that appears beneath the application icon.
User Resize Mode	Specifies whether the window size is Fixed or Adjustable (whether it can be resized in the compiled application).
Window Areas	<p>Specifies whether the main window will have a menu bar, a tool bar, or a footer.</p> <p>Note that a tool bar or a footer will show up as a control pane object in the Revolving Property Editor. You will probably want to add controls, such as the radio buttons in the App Builder primary window Build/Test tool bar, to a tool bar, and to make connections between the controls and programmatic functions. Code will have to be written to make a tool bar or footer functional.</p>
Initial State, Iconic	Specifies whether the window is displayed as a window or an icon when the compiled application is opened.

Menu Property Editor

Used to create menus, the Menu Property Editor can be displayed by:

- Choosing Menus from the Editors menu of the App Builder primary window

Note - Choosing Menus from the Editors menu in the App Builder primary window is the same as clicking the Tear-off button in the Revolving Property Editor when the Object Type is Menu.

- Or, choosing Menu from the Revolving Property Editor Object Type option menu
- Or, choosing Create New Menu from the Popup Menu option menu in a property editor.

A menu, unlike most of the objects edited in the Revolving Property Editor, is a created object and is not available from an object palette.

Only properties unique to a menu object are described here. See “Property Editor: Universal Properties” on page 134 for descriptions of Object Type, Objects, Object Name, and Color. See “Property Editor: Common Properties” on page 135 for descriptions of Items, Label, and Item State (Active).

Add New Menu	Adds a new menu to the list of menus.
Edit	Performs edit functions (Cut, Copy, Paste, Delete) on the selected item in the list of menu objects. Cut and Copy place the selected item in a buffer, ready for Paste. Delete removes the item, but does not place it in a buffer.
Tearoff	Specifies whether tearoff is Enabled or Disabled. If tearoff is enabled the selected menu will be "postable." That is, the menu will be displayed until you explicitly dismiss it if you click on the Tearoff indicator (a dotted line).
Item Label Type	Specifies the type of label (String, Graphic, or Separator) for the item selected in the Items list. If Graphic is chosen, "Label" becomes "Graphic Filename." If Separator is chosen, Label or Graphic Filename becomes inactive and Line Style becomes active. A Separator menu item is used to create a visual division in a menu, such as that seen in the Editors menu of the App Builder primary window.
Item Mnemonic	Specifies one of the letters in the selected item as a keyboard shortcut for choosing the item when the menu is posted. The letter specified will be underlined. Pressing the mnemonic letter when the menu is posted will cause that item to be

chosen. Note that case is significant and that a particular letter can be used as a mnemonic only once within a menu.

Accelerator

Specifies a keyboard shortcut for choosing the selected item. An accelerator is comprised of a prefix (Ctrl, Alt, Meta, or Shift), <Key>, and a letter (upper or lower case). To make Control-x an accelerator, for instance, type the following:

```
Ctrl<Key>x
```

When you display the menu in test mode or in the compiled application, "Ctrl+x" will be included to the right of the menu item label. If you press the Control key and type x with the cursor in the window that contains the menu, the specified action will be performed.

You can combine the Shift key with one of the other keys to form a compound prefix, if you wish. To make Shift Control-x an accelerator, type the following:

```
Shift Ctrl<Key>x
```

Line Style

Specifies the type of line style for the selected separator item; active only when Item Label Type is Separator. Choices are None, Etched In, Etched Out, Etched In Dash, Single Line, Double Line, Etched Out Dash, Single Dashed Line, and Double Dashed Line. A separator of the chosen line style will be displayed in the menu instead of a graphic or text label.

Item SubMenu

A menu button and a text field for attaching, de-attaching, creating, or editing a submenu for the selected item in the Items list. If a submenu is attached to the selected item, the name of the submenu will be displayed in the text field.

Menubar Property Editor

Only properties unique to a menu bar object are described here. See "Property Editor: Universal Properties" on page 134 for descriptions of Object Type, Objects, Object Name, Initial State, and Color. See "Property Editor: Common Properties" on

page 135 for descriptions of Items, Item Label Type, Label, Pulldown Menu, and Item State (Active).

Item Mnemonic	Specifies one of the letters in the selected item as a keyboard shortcut for displaying the menu. The letter specified will be underlined in the menu bar. In test mode and in the compiled application, the menu will be displayed if you hold down the Alt key and press the mnemonic letter (case is irrelevant) while the window that contains the menu bar has focus.
Item State, Is Help Item	Specifies that the selected item is the Help menu. The Help menu appears at the right edge of the menu bar and has a built-in connection to the online help mechanism. The item labelled "Help" is the help button, by default.

Paned Window Property Editor

A paned window, unlike most of the objects edited in the Revolving Property Editor, is a created object and is not available from an object palette. See “To Create a Paned Window” on page 50 for instructions for creating a paned window.

Only properties unique to a paned window object are described here. See “Property Editor: Universal Properties” on page 134 for descriptions of Object Type, Objects, Object Name, and Initial State.

Panes	Lists the panes that comprise the paned window.
Pane Geometry	Displays the W(idth) and H(eight) of the pane selected in the Panes list.
Pane Height	Specifies the Min(imum) and Max(imum) height (in pixels) of the selected pane. These values determine the limits for the panes when you move the sash between panes.

Scale Property Editor

Only properties unique to a scale or gauge object are described here. See “Property Editor: Universal Properties” on page 134 for descriptions of Object Type, Objects, Object Name, Initial State, and Color. See “Property Editor: Common Properties” on page 135 for descriptions of Label Type, Position (Label), Label, and Geometry.

Scale Type	Specifies Scale or Gauge. A scale includes a slider and is modifiable by a user (in the compiled application or in test mode). A gauge indicates a value, does not include a slider, and is not modifiable by a user.
Orientation	Specifies whether the scale object will be displayed in Horizontal or Vertical orientation.
Direction	Specifies Left to Right or Right to Left incrementing of value for a horizontal scale object, Bottom to Top or Top to Bottom incrementing of value for a vertical scale object.
Value Range	Specifies Min(imum), Max(imum, and Incr(ement) values for a scale object. All values must be integers. The increment value is used when you click with the mouse at either end of the scale object (in the compiled application or in test mode). See Decimal Points.
Decimal Points	Specifies the number of decimal places to shift the scale value when displaying it (if Show Value is checked). For example, a scale value of 250 with a Decimal Points value of 1 would display as 25.0; a scale value of 250 with a Decimal Points value of 2 would display as 2.50.
Initial Value	Specifies the initial numerical value setting for the scale.
Show Value	Specifies whether the numerical value of the scale position will be displayed. See Decimal Points and Initial Value above.

Separator Property Editor

Only properties unique to a separator object are described here. See “Property Editor: Universal Properties” on page 134 for descriptions of Object Type, Objects, Object Name, Initial State, and Color. See “Property Editor: Common Properties” on page 135 for a description of Geometry.

Orientation	Specifies whether the separator object will be displayed in Horizontal or Vertical orientation.
--------------------	---

Line Style Specifies the type of line style for the separator. Choices are None, Etched In, Etched Out, Etched In Dash, Etched Out Dash, Single Line, Double Line, Single Dashed Line, and Double Dashed Line.

Spin Box Property Editor

Only properties unique to a spin box object are described here. See “Property Editor: Universal Properties” on page 134 for descriptions of Object Type, Objects, Object Name, Initial State, and Color. See “Property Editor: Common Properties” on page 135 for descriptions of Label Type, Position (Label), Label, Items, Item Label, and Geometry.

Spin Box Type Specifies the type of spin box. If Numeric is chosen, the Items, Label, Add Item, Edit, and Selected properties are inactive. If String List is chosen, the Value Range, Initial Value, and Decimal Points properties are inactive.

Arrow Style Specifies the style of arrow to be displayed on the spin box. Choices are Flat Beginning, Flat End, Beginning, End, and Split.

Value Range Specifies Min(imum), Max(imum), and Incr(ement) values for a spin box object. All values must be integers. The increment value is used when you click with the mouse on one of the spin box arrows (in the compiled application or in test mode). Value Range is inactive if Spin Box Type is String List. See Decimal Points.

Initial Value Specifies the starting value in the spin box in the compiled application. Initial Value is inactive if Spin Box Type is String List.

Decimal Points Specifies the number of decimal places to shift the spin box value when displaying it. For example, a spin box value of 250 with a Decimal Points value of 1 would display as 25.0; a spin box value of 250 with a Decimal Points value of 2 would display as 2.50. Decimal Points is inactive if Spin Box Type is String List.

Selected Specifies whether the item selected in the Items list will be selected when the compiled application is opened. Only one item can be selected. Selected is inactive if Spin Box Type is Numeric.

Term Pane Property Editor

Only properties unique to a term pane object are described here. See “Property Editor: Universal Properties” on page 134 for descriptions of Object Type, Objects, Object Name, Initial State, and Color. See “Property Editor: Common Properties” on page 135 for descriptions of Scrollbars, Border Frame, Position [XY], Size, Popup Menu, and Menu Title.

Process String A text field for specifying the process (command) that will be run in the term pane in the compiled application. The default value is `/bin/csh`.

Text Field Property Editor

Only properties unique to a text field object are described here. See “Property Editor: Universal Properties” on page 134 for descriptions of Object Type, Objects, Object Name, Initial State, and Color. See “Property Editor: Common Properties” on page 135 for descriptions of Label Type, Position (Label), Label, Position [XY], and Width.

Operation Specifies whether the text field in the compiled application and in test mode will be Editable or Read-Only.

Maximum Chars Specifies the maximum number of characters that can be typed in the text field. This field is independent of the W(idth) field, which specifies the width of the displayed text.

Initial Value Specifies the initial value to be displayed in the text field in the compiled application or in test mode.

Text Pane Property Editor

Only properties unique to a text pane object are described here. See “Property Editor: Universal Properties” on page 134 for descriptions of Object Type, Objects, Object

Name, Initial State, and Color. See “Property Editor: Common Properties” on page 135 for descriptions of Border Frame, Position [XY], Size, Popup Menu, and Menu Title.

Operation	Specifies whether the text pane in the compiled application and in test mode will be Editable or Read-Only.
Word Wrap	Specifies whether words will be wrapped to the following line when the Size W(idth) value is reached.
Initial Value	Specifies the initial value to be displayed in the text pane in the compiled application or in test mode.

Index

A

- accelerator for menu item 53, 148
- Add Item button 138
- adding
 - footer to window 146
 - items to Items list 138
 - menu bar to window 146
 - menu to list of menus 147
 - pane to paned window 51
 - tool bar to window 146
- aligning objects 39
- alignment choices 39
- App Builder
 - exiting 17
 - icon 17
 - overview of process 17
 - primary window 16, 116
 - quitting 17
 - starting 17
- application
 - building 110
 - building and running in one step 110
 - generating code for 110
 - quitting 111
 - running 110
 - setting behavior of 88, 91
- Application Framework Editor 88
- Apply button 138
- Arrow Direction property 139
- attaching
 - menu to object 56
 - menu while creating 57, 58
 - objects 91, 100, 101

- submenu to menu item 58
 - submenu while creating 59, 60
- attachments 94
- Attachments button 138
- Attachments Editor 101

B

- background color 43, 135
- border
 - creating for single object 94
 - setting frame style for groups 92
 - types of 135
- Border Frame property 135
- browser 126
 - editing objects 37
- building application 110
- button control 122
 - properties of 139
- Button property editor 139

C

- Cancel button 138
- check box control 123
- child pane 48
- choice objects 140
- Choice property editor 140
- closing projects 26
- Code Generator 110, 128
 - environment options 131
 - options 111
- Code Generator Options dialog box 129

- color
 - background 135
 - foreground 135
- Color Chooser 43
- combo box control 122, 141
- Combo Box property editor 140
- connecting
 - menu item and Call Function action 78
 - menu item and Execute Code action 79
 - menu item and predefined action 77
 - menu item to help topic 74
 - message to function 65
 - On Item help to Help menu item 73
 - two objects 75, 76
- connections
 - drag 82
 - drop 82
 - editing 80
 - On Item help menu item 73
 - selecting objects through drag-linking 75
 - selecting objects through the Connections Editor 76
 - testing 106
- Connections button 138
- Connections Editor 76
- control objects
 - selecting 36
- control pane 120
- Control Pane property editor 141
- controls
 - button 122
 - check box 123
 - combo box 122
 - drop rules 20
 - gauge 123
 - label 123
 - menu bar 123
 - menu button 122
 - option menu 122
 - radio box 123
 - scale 123
 - scrolling list 123
 - separator 123
 - spin box 124
 - text field 123
- Controls palette 122, 124
- copying objects 37
- creating
 - border on object 94
 - child pane 48
 - connection between two objects 75, 76
 - custom dialog 34
 - groups 92
 - interface 15
 - layered panes 48
 - main window 34
 - menu while attaching 57, 58
 - menus 54, 55
 - messages 63, 65
 - modules 26
 - On Item help 72
 - On Item menu item 73
 - paned windows 50
 - projects 21
 - spanning control pane 34
 - submenu while attaching 59, 60
- custom dialog
 - creating 34
 - default buttons in 142
 - definition of 118
 - parent main window for 141
 - properties of 141
- Custom Dialog property editor 141
- cutting objects 37

D

- default button sets for messages 64
- default buttons
 - for custom dialog 142
 - for messages 64
- deleting objects 38
- deselecting objects 36
- displaying
 - fixed property editor 43
 - help 72
 - layered panes 49
- distributing objects evenly 39
- drag and drop 15
 - rules 19
 - setting behavior for 82, 84
- Drag and Drop Editor 82
- drag connection 82
- drag operations 83
- drag-link connection 75

- drag-select 36
- draw area pane 121
 - size of canvas in 142
- Draw Area Pane property editor 142
- drop connection 82
- drop operations 83
- drop rules
 - for controls 20
 - for panes 19
 - for windows 19
- dtappbuilder command 17

E

- Edit button 138
- editing
 - browser 37
 - connections 80
 - group properties 92, 93
 - interface 37
 - interface objects 37
 - menu properties 55, 56
 - message properties 65
 - object properties 42
- editor 140
 - Application Framework 88
 - Attachments 101
 - Connections 76
 - Drag and Drop 82
 - Help 73
 - Message 61, 63
 - retaining on workspace 138
- encapsulated project file 25
- environment options, Code Generator 112, 131
- exporting
 - module in UIL format 29
 - modules 29

F

- file selection dialog 119
 - properties of 142, 143
- File Selection Dialog property editor 142
- fixed property editor, displaying 43
- foreground color 43, 135

G

- gauge control 123
 - properties of 150
- generating code for application 110
- Geometry property 135
- Graphic Filename property 136
- Group Property Editor 92, 93, 143
- grouping and attaching objects 91
- groups
 - creating 92
 - editing properties of 92, 93
 - naming 92
 - properties for 143, 144
 - setting border frame style for 92
 - undoing 93

H

- help
 - displaying 72
 - specifying menu bar item as 149
- Help Editor 73
- Help menu 74
 - connecting On Item help to 73
- Help Text button 138
- help volume 74
- hiding modules 31

I

- importing
 - module in UIL format 27
 - modules 27
- Initial State property
 - active 135
 - Iconic 45
 - Visible 45, 135
- interface
 - creating 15
 - overview of creating and maintaining 17
- internationalization of application 88
- Item Label Type property 53, 136
- item mnemonic 53, 148, 149
- Item State property 136

L

- label control 123

- alignment of 145
- Label property 136
- Label property editor 144
- Label Type property 136
- labels
 - arrow direction for 140
 - for buttons 139
 - for OK button in file selection dialog 143
 - position setting for 136
- layered panes
 - creating 48
 - definition of 48
 - displaying 49
 - unmaking 49
 - viewing 49
- line style for separator 53, 148
- List property editor 145
- lists, properties of 145

M

- main window
 - creating 34
 - definition of 118
 - editing properties of 44, 47
- Main Window property editor 146
- menu bar control 123
 - properties of 149
- menu button control 122
- menu items
 - accelerator for 53
 - attaching help topic to 74
 - connecting to Call Function action 78
 - connecting to Execute Code action 79
 - connecting to predefined action 77
 - mnemonics for 53
- Menu Property Editor 52, 146
- Menu Title property 136
- Menubar property editor 149
- menus
 - attaching to objects 56
 - creating 54, 55
 - creating and attaching in one procedure 57, 58
 - definition of 52
 - editing properties of 55, 56
 - Item Label Type for 53
 - and modules 54

- properties of 147, 148
- property for attaching 136
- setting title for pop-up 136
- style for separator line 53
- Tearoff property 52, 147
- testing 105
- message dialog box, , see messages
- Message Editor 61, 63
- message types 64
- messages
 - adding to module 64
 - connecting to functions 65
 - creating 63, 65
 - default button for 64
 - default button sets for 64
 - editing properties of 65
 - entering text for 64
 - naming 64
 - selecting type of 64
- mnemonic, , see item mnemonic
- module browser 126
 - editing objects 37
- modules
 - adding message to 64
 - creating 26
 - exporting 29
 - hiding 31
 - importing 27
 - importing in UIL format 27
 - naming 27
 - removing from project 31
 - renaming 28
 - saving 28
 - saving in UIL format 29
 - showing 31
- multiple-select 36

N

- naming
 - application icon 146
 - custom dialog 141
 - groups 92, 144
 - messages 64
 - modules 27
 - projects 22
 - resource files 22

windows 45, 146

O

object information area 124, 125

object types 18

objects

adding to selection 36

aligning 39

attaching 100, 101

button 122

check box 123

choice 140

combo box 122

creating border for 94

cut or copy 37

deleting 38

deselecting 36

distributing evenly 39

draw area pane 121

editing 37

editing properties of 42

gauge 123

grouping and attaching in one
procedure 91

label 123

label setting for 136

label type for 136

menu bar 123

menu button 122

option menu 122

paste 37

position in relation to parent 137

radio box 123

rules for dropping 19

scale 123

scrolling list 123

selecting 36

separator 123

setting fixed size 137

setting size to fit contents 137

spin box 124

term pane 121

text field 123

text pane 120

width and height values of 135

XY location of 135

OK button 138

On Item help

creating 72

menu item 73

opening

existing projects 22

property editor 41

option menu control 122

options, Code Generator 111

P

palette

Controls 122, 124

Panes 119

Windows 117

Paned Window property editor 149

paned windows

adding pane to 51

creating 50

definition of 49

properties of 149

unmaking 51

panes

adding to paned window 51

attaching a scroll bar to 137

drop rules 19

setting absolute width and height for 137

pasting objects 37

Position property 136, 137

primary main window

editing properties of 44, 47

setting for application 88

Project Organizer 125

projects

closing 26

creating 21

naming 22

opening existing 22

removing a module from 31

renaming 24

saving 23

saving as encapsulated file 25

saving in different folder 24

testing 103

property editor

Button 139

Choice 140

- Combo Box 140
- Control Pane 141
- Custom Dialog 141
- Draw Area Pane 142
- File Selection Dialog 142
- Group 92, 93, 143
- Label 144
- List 145
- Main Window 146
- Menu 146
- Menubar 149
- opening 41
- Paned Window 149
- Scale 149
- Separator 150
- Spin Box 151
- Term Pane 152
- Text Field 152
- Text Pane 153

Q

- quitting
 - App Builder 17
 - application 111

R

- radio box control 122
- removing module from project 31
- renaming
 - modules 28
 - projects 24
- Reset button 138
- resource file
 - attributes written to 88
 - naming 22
- Revolving Property Editor
 - common buttons in 137, 139
 - common properties in 135, 137
 - universal properties in 134, 135
- rules
 - drag and drop 19
 - for dropping objects 19
- running application 110
 - in one step 110

S

- saving
 - module in UIL format 29
 - modules 28
 - project 23
 - project to different folder 24
 - project to encapsulated file 25
- scale control 123
 - properties of 150
- Scale property editor 149
- Scrollbars setting 137
- scrolling list control 123
- selecting
 - colors 43
 - message type 64
 - multiple objects 36
 - objects 36
 - single object 35, 36
- separator 123
 - properties of 150
- Separator property editor 150
- session management method 88
- setting
 - background color 43
 - border frame style for groups 92
 - Code Generator options 111
 - environment options 112
 - foreground color 43
 - internationalization 88
 - primary main window for application 88
 - vendor name for application 88
 - version number for application 88
- showing modules 31
- size
 - of draw area canvas 142
 - of lists 145
 - of pane in paned window 149
 - setting for combo box 141
 - of window 146
 - to fit contents 137
- Size Policy property 45, 137
- Size property 137
- spanning control pane
 - creating 34
 - description of 34
- spin box control 124
 - properties of 151, 152

- Spin Box property editor 151
- starting App Builder 17
- submenus
 - attaching to menu items 58
 - creating and attaching in one
 - procedure 59, 60
 - property for attaching 136

T

- Tear-off button 137
- tear-off property editor, displaying 43
- Tearoff menu property 52, 147
- term pane 121
 - process string for 152
- Term Pane property editor 152
- testing
 - connections 106
 - menus 105
 - projects 103
- text field control 123
 - properties of 152
- Text Field property editor 152
- text pane
 - definition of 120
 - properties of 153
- Text Pane property editor 153
- title bar 116
- ToolTalk message handling 88
- types of objects 18

U

- UIL format

- importing modules in 27
- saving module in 29
- ungrouping objects 93
- unmaking
 - layered panes 49
 - paned windows 51
- user interface, , see interface
- User Resize Mode 45

V

- vendor name, setting for application 88
- version number, setting for application 88
- viewing layered panes 49

W

- windows
 - adding footer 146
 - adding menu bar 146
 - adding tool bar 146
 - creating main 34
 - drop rules 19
 - main 44, 118
 - naming 45, 146
 - parent for custom dialog 141
 - primary 44
 - setting absolute width and height for 137
 - setting size of 137
 - spanning control pane 34
- Windows palette 117